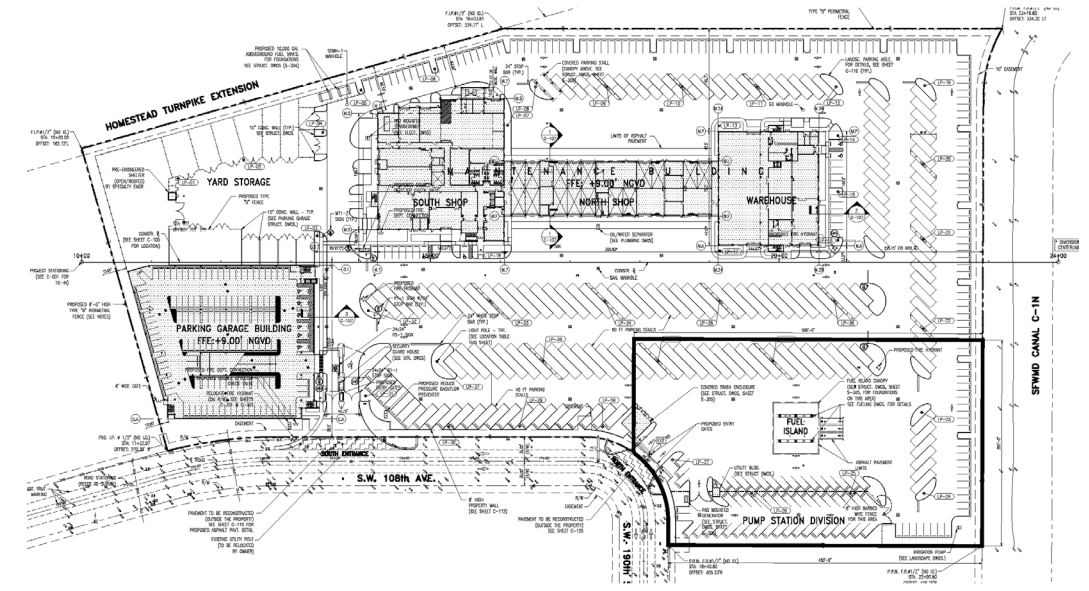
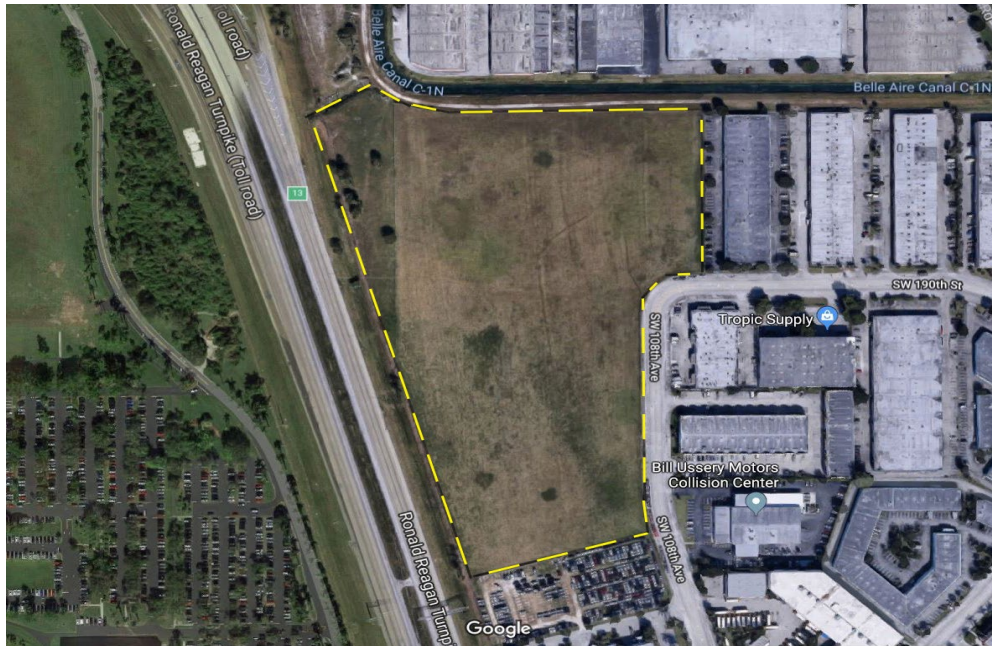




MIAMI-DADE WATER AND SEWER DEPARTMENT
A21-WASD-01 WASD South Dade Maintenance Facility

May 24, 2022

PROJECT LOCATION



- Total of 17.32-acre two parcel is located at SW 108th Ave, Florida Turnpike, Quail Roost Dr and C-1N Canal in SW Miami Dade County

- Original design with 3.25-acre land to be transferred to ISD



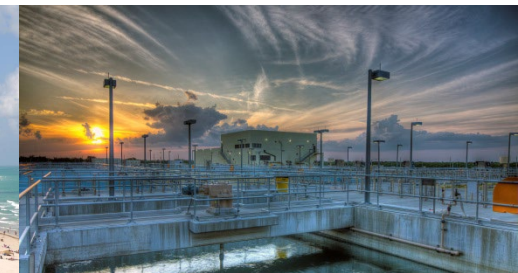
SCOPE OF SERVICES

All engineering service for an approximately 126,000 square feet WASD maintenance facility;

1. The building is 2-story structures that will include warehousing space, repair shops and an administrative office and a 3-story parking structure;
2. Complete site development;
 - Site lighting;
 - Landscaping; and irrigation;
 - Proposed facility extended parking;
3. Implementing Order 8-8 Sustainable Buildings Program and comply with the County's new Sea Level Rise Strategy; Prior to start the design, perform a feasibility analysis to determine the appropriate level of LEED certification for the facility. This analysis will produce a final determination on the level of LEED certification;
4. Assistance during the permitting and procurement phases;
5. Engineering services during construction including,
 - Periodic site inspections and attendance at meetings, review shop drawings, respond to information requests, review claims and potential change orders, review as-built drawings, and
 - Certification of the project.

A/E TECHNICAL CERTIFICATION REQUIREMENTS

Technical Category (TC)	Description	TC Percentage %
14.00 PRIME	Architecture	40
18.00 PRIME	Architectural Construction Management	5
10.05 PRIME/OTHER	Environmental Engineering – Contamination Assessment and Monitoring	1
11.00 PRIME/OTHER	General Structural Engineering	20
12.00 PRIME/OTHER	General Mechanical Engineering	10
13.00 PRIME/OTHER	General Electrical Engineering	10
15.01 PRIME/OTHER	Surveying and Mapping	2
16.00 PRIME/OTHER	General Civil Engineering	10
20.00 PRIME/OTHER	Landscape Architecture	2
	TOTAL	100



OTHER NEWS – UPDATED WASD DEVELOPMENT SERVICES WEBSITE

Home > Water and Sewer > Development Services

Water and Sewer Development Services

Share  

All new construction, changes of use and most renovations for residential and commercial projects must be evaluated and approved by the Utilities Development and Services Division at the Miami Dade Water and Sewer Department (WASD).

Top Services



Payments and Invoices

Construction and development invoices can be paid online with a credit or debit card only. The invoice must be processed before submitting payment.



Design and Construction Standards

Standards are created to design and construct infrastructure projects that will be donated to the Water and Sewer Department.



Plans Review

New business customers can go through the Water and Sewer Department development plan review and approval process online.



Water or Sewer Service Agreement

If you need to do a Sewer Lateral, Water or Sewer Main Extension, Flowline or Private Pump Station you must apply for the Miami Dade Water and Sewer Service Agreement.



Set Meter Request

For properties served by well water and existing water service with meter box at the property to connect to the WASD water system as a first time, or for new construction or remodeling without an agreement.



Floating Meter Request (Construction Meter)

Request a floating meter (construction meter) when water is needed for a temporary project and the property does not currently have a water meter, or for a mobile business operating from a vehicle.



Utilities Information Request

Request information regarding Water and Sewer Infrastructure. As Built, Atlas, Sewer Lateral Location, Easement Consent Letter (Utility Easement), and Preliminary Points of Connection (POC).



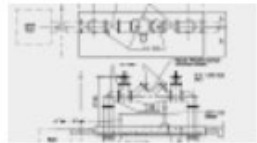
Pre-construction Meeting

Request a pre-construction meeting through e-Builder at least two business days in advance of the time and date you desire.



Verification Form or Ordinance Letter

All first time connections, new construction, changes of use, and most renovations for residential and commercial projects must be evaluated and approved by WASD.



Cross-Connection Control and Backflow Prevention

Learn about the potential danger of cross connections with our water supply, as well as backflow prevention training and testing.



Letter of Availability

A water or sewer Letter of Availability advises you that water and sewer mains are available to service the project.



Pre-Approved Product List

The Pre-Approved Product List is for contractors, developers and suppliers to submit products used in construction for approval to WASD.



Service Installation Request

If no water service exists (no meter box) and/or a new meter box is needed, you will need to request a Service Installation Request (SIR) before requesting a set meter.



New Sewer Lateral

If no sewer service exists and/or a new sewer lateral is needed, you will need to check Water or Sewer Agreement. Also, please check Utilities Information Request to verify if a sewer lateral or sewer lines are abutting the property.



First Time Sewer Connection (Existing Sewer Lateral)

For sewer service connection as a first time with existing sewer lateral. Please check Utilities Information Request to verify if there is a sewer lateral at the property before starting a request for a sewer service connection.



Service or Utility Relocation Request

Request relocation of services, fire hydrants, utilities, cut & plug, retirement, etc. as determined on a case by case basis.



Municipality FDEP

For properties in the municipalities' service areas customers may need to submit Municipal Florida Department of Environmental Protection application without agreements and route them through e-Builder for WASD approval.

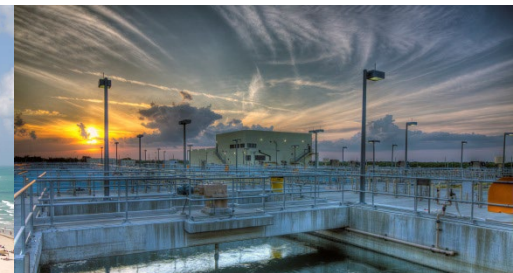


Construction Project Request

If your construction project has an excavated service agreement with the Water and Sewer Department, you will need to follow additional procedures.



- Redesigned to improve the customer experience.
- Responsive and optimized for mobile devices.
- Better serves the subset of users who regularly access these pages on the go.



A photograph of a water treatment facility. In the foreground, there is a metal railing overlooking a large, shallow basin of greenish water. In the background, there are several industrial buildings, including a large white cylindrical tank on the right, and a blue sky with scattered white clouds.

QUESTIONS?

NELSON PEREZ-JACOME, PE

Assistant Director Engineering & Construction

WASD-CIP@miamidade.gov

Miami-Dade Water and Sewer Department