



Miami-Dade Water and Sewer Department Capital Improvement Program

Pre-solicitation Meeting Grant Funded Projects July 14, 2022

Contents/Overview

1 DISTRIBUTION AND COLLECTION SYSTEM

1.1 SCOPE OF SERVICES

1.2 EXPERIENCE AND QUALIFICATIONS

1.3 TECHNICAL CERTIFICATIONS REQUIREMENTS

1.4 BREAKDOWN

2 WATER & WASTEWATER PLANTS

2.1 SCOPE OF SERVICES

2.2 EXPERIENCE AND QUALIFICATION

2.3 TECHNICAL CERTIFICATIONS REQUIERMENTS

2.4 BREAKDOWN

3 GRANT NTPC REQUIREMENTS



Distribution & Collection System

Scope of work:

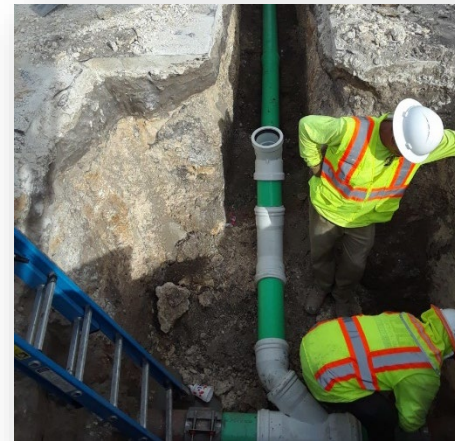
The Miami-Dade Water and Sewer Department seeks the services of a Consultant for the study, planning, design, permitting, construction management, inspections, and related services of water and wastewater collection and distribution systems .



Water and Sewer PS



Water Mains &
Force Mains



Gravity sewer



Trenchless pipelines



Experience and Qualifications

Prime Consultant shall provide:

- ✓ (3) successfully designed, constructed and operating pipeline project
- ✓ (1) project shall be at least 36-inches of larger within the past (5) years
- ✓ (3) successfully designed, constructed and operating pump station project
- ✓ Client reference and contact information

Subconsultants shall provide:

- ✓ (1) project relevant to the scope of works completed prior to the solicitation date
- ✓ Client reference and contact information



A/E Technical Certifications Requirements

Prime:

- ✓ 6.01 Water and Sanitary Sewer Systems – Water Distribution and Sanitary Sewage Collection and Transmission
- ✓ 6.02 Water and Sanitary Sewer Systems – Major Water and Sanitary Sewage Pumping Facilities
- ✓ 16.00 General Civil Engineering
- ✓ 17.00 Engineering Construction Management

Prime and/or Subconsultants

- ✓ 9.02 Soils, Foundations and Materials Testing – Geotechnical and Materials Engineering Services
- ✓ 10.09 Environmental Engineering – Wellfield, Ground Water and Surface Water Protection and Management Water and Sanitary Sewage Pumping Facilities
- ✓ 11.00 General Structural Engineering
- ✓ 12.00 General Mechanical Engineering
- ✓ 13.00 General Electrical Engineering
- ✓ 15.01 Surveying and Mapping – Land Surveying





Breakdown

- ✓ (1) Qualified firm under (1) Non-Exclusive PSA
- ✓ Term: (5) year period
- ✓ Maximum compensation: 10M
- ✓ Not Limited to Grant Funded Projects - However, preference would be given to general contracts for non-grant funded projects



Water & Wastewater Plants

Scope of work:

The Miami-Dade Water and Sewer Department seeks the services of a Consultant for the study, planning, design, permitting, construction management, inspections, and related services of Water and Sewer Treatment Facilities.

The project will include engineering services at:

- ✓ NDWWTP
- ✓ CDWWTP
- ✓ SDWWTP
- ✓ Hialeah WTP
- ✓ John E. Preston WTP
- ✓ Alexander Orr WTP



Experience and Qualifications

Prime Consultant shall provide:

- ✓ Experience of large regional water and sewer treatment plants
- ✓ Experience with condition assessments
- ✓ (1) successfully project new or major retrofit of a lime softening water treatment plant
- ✓ (1) successfully project new or major retrofit of a pure oxygen wastewater treatment plant

Subconsultants shall provide:

- ✓ (1) project relevant to the scope of work completed prior to the solicitation date
- ✓ Client reference and contact information



A/E Technical Certifications Requirements

Prime:

- ✓ 6.03 Water and Sanitary Sewer Systems – Water and Sanitary Sewage Treatment Plants
- ✓ 16.00 General Civil Engineering 16.00 General Civil Engineering
- ✓ 17.00 Engineering Construction Management

Prime and/or Subconsultants

- ✓ 6.01 Water and Sanitary Sewer Systems – Water Distribution and Sanitary Sewage Collection and Transmission
- ✓ 6.02 Water and Sanitary Sewer Systems – Major Water and Sanitary Sewage Pumping Facilities
- ✓ 9.02 Soils, Foundations and Materials Testing – Geotechnical and Materials Engineering Services
- ✓ 10.09 Environmental Engineering – Wellfield, Ground Water and Surface Water Protection and Management
- ✓ 11.00 General Structural Engineering
- ✓ 12.00 General Mechanical Engineering
- ✓ 13.00 General Electrical Engineering
- ✓ 15.01 Surveying and Mapping – Land Surveying





Breakdown

- ✓ (1) Qualified firm under (1) Non-Exclusive PSA
- ✓ Term: (5) year period
- ✓ Maximum compensation: 10M
- ✓ Not Limited to Grant Funded Projects - However, preference would be given to general contracts for non-grant funded projects



Grant NTPC Requirements

- Currently evaluating minimum qualifications – requirements may change
- SBE Measures are being evaluated – requirements may change
- Possible DBE measures
- Evaluating local preference – requirements may change

* MDWASD will strive to maintain all possible requirements while allowing the PSA to be funded by Federal grant dollars



Use the QR Code Below to Join Our Mailing List



Questions?

NELSON PEREZ-JACOME, PE

Assistant Director Engineering & Construction

WASD-CIP@miamidade.gov

Thank You!

