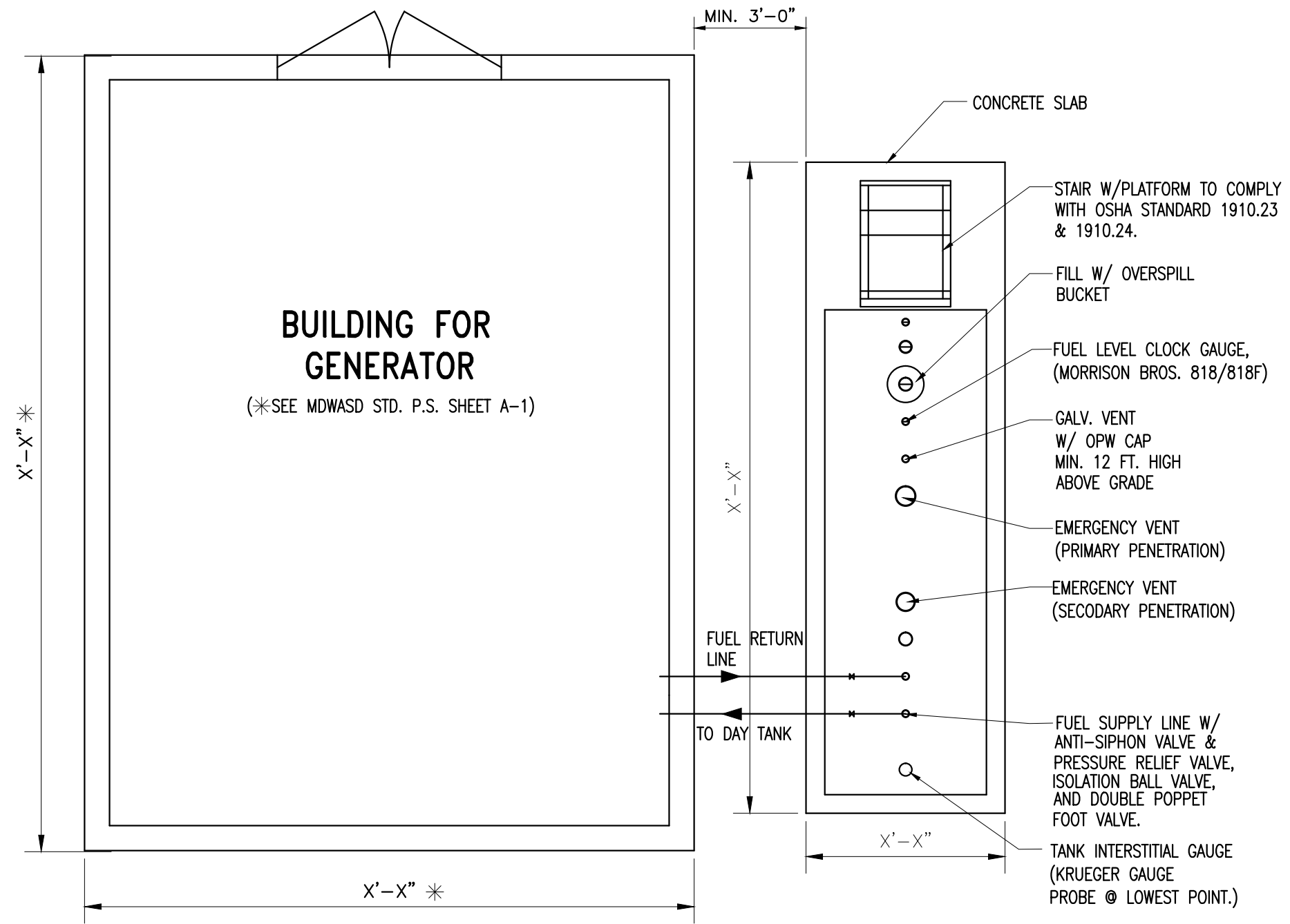


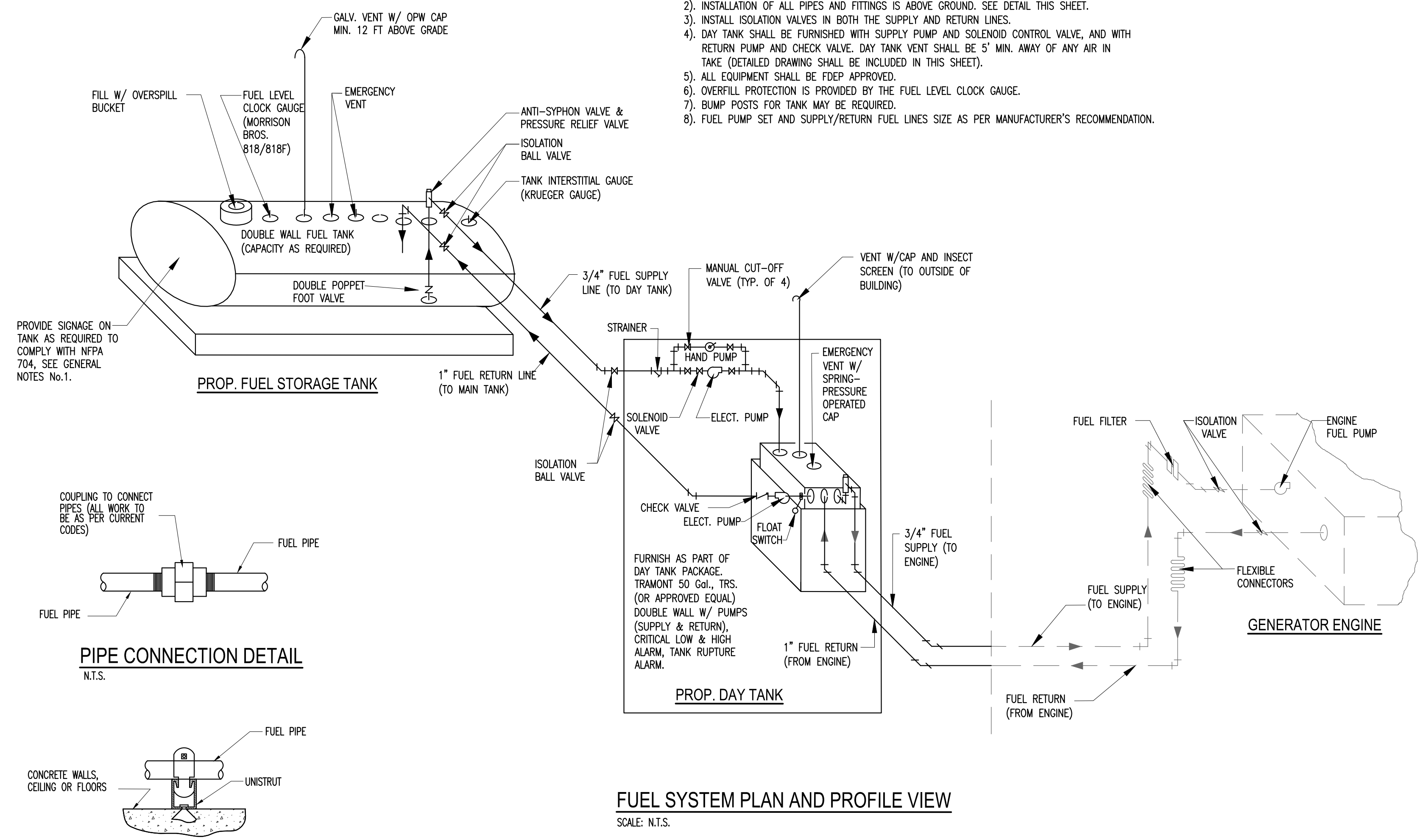
PCTS 00000/CONTRACT X-000 or RPQ/ERX00000
SUBMERSIBLE PUMPING STATION WITH GENERATOR
PUMPING STATION No. 0000 (UPDATE 2015)
PROJECT OFFICIAL ADDRESS
SAMPLE - FUEL STORAGE TANK PLAN AND DETAILS



TYPICAL ABOVEGROUND FUEL STORAGE TANK LOCATION
N.T.S.

GENERAL NOTES:

- FUEL STORAGE TANK SHALL BE AN ABOVE-GROUND DOUBLE-WALLED (UL-2085, UL-142) AND FDEP APPROVED, PREFERABLY STEEL CYLINDRICAL TANK (REFER TO FIREGUARD TANKS OR APPROVED EQUAL). EACH TANK SHALL BEAR THE UL 2085 LABEL AND THE IDENTIFICATION SIGNS ON TANK. THE SIGNS SHALL COMPLY WITH NFPA 704 AND SHALL INCLUDE, BUT NOT LIMIT TO, THE NFPA HAZARD DIAMOND PLACARD; TYPE OF FUEL (DIESEL); TANK CAPACITY; NO SMOKING; AND EMERGENCY PHONE NUMBERS.
- FUEL LINES SHOULD BE OF BLACK IRON, TO BE MOUNTED ON THE WALL AND SECURED WITH UNISTRUT BRACKETS OR RUN THE LINES DIRECTLY THROUGH THE GENERATOR BUILDING WALL AND CONNECT THEM DIRECTLY TO THE GENERATOR. THE FUEL LINES SHALL BE PROPERLY PREPARED AND PRIMED WITH KEELER AND LONG TRI-POLAR FERRITE PRIMER OR APPROVED EQUAL AND TOP COATED WITH RUST-OLEUM INDUSTRIAL ACRYLIC ENAMEL 5225 (ROYAL BLUE OR OTHER COLOR SELECTED BY MDWASD) OR APPROVED EQUAL.
- ISOLATION VALVES ON TOP OF THE FUEL LINES SHALL BE BALL VALVES AND NOT GATE VALVES. VALVES SHALL BE STAINLESS STEEL BODIES FULL BORE BALL VALVE, NIBCO T-585-S6-R-66 LL OR APPROVED EQUAL.
- INSTALL AN FDEP APPROVED 7 GALLON POWDER COATED, U.L. LISTED SPILL CONTAINMENT BUCKET W/WATER TIGHT LID, AND INCLUDE NORMAL CLOSED VALVE TO RELEASE SPILLED PRODUCT INTO THE PRIMARY STEEL TANK.
- INSTALL AN ANTI-SIPHON VALVE ON THE SUPPLY LINE ON THE HIGHEST LEVEL OF PIPING.
- INSTALL A FUEL LEVEL CLOCK GAUGE MORRISON BROS. 818/818F OR APPROVED EQUAL.
- INSTALL A KRUEGER GAUGE FOR INTERSTITIAL MONITORING OR APPROVED EQUAL.
- PROVIDE AND INSTALL ONE SET OF STAIRS WITH PLATFORM TO FACILITATE FUELING THE TANK. THE STAIRS SHALL COMPLY WITH OSHA STANDARD 1910.24 FIXED INDUSTRIAL STAIRS AND OTHER APPLICABLE STANDARDS. STANDARD RAILINGS SHALL BE PROVIDED ON THE OPEN SIDES OF ALL EXPOSED STAIRWAYS AND STAIR PLATFORMS AND SHALL COMPLY WITH OSHA STANDARD 1910.23 GUARDING FLOOR AND WALL OPENINGS AND HOLES. THE TOP PLATFORM SHALL BE AT AN ELEVATION OF 24"-30" BELOW THE TOP OF THE TANK (EXCLUDING ANY TANK APPURTENANCES). STAIR ASSEMBLY SHALL BE OF GALVANIZED, CARBON STEEL CONSTRUCTION. THE STAIRS SHALL BE FREE STANDING AND SHALL NOT CONTACT NOR BE SUPPORTED BY THE FUEL TANK AND SHALL HAVE A 1"-3" CLEAR GAP BETWEEN THE STAIRS AND THE TANK.
- FUEL STORAGE TANK LOCATION AND FOUNDATION SHALL COMPLY WITH ALL THE APPLICABLE AND CURRENT LOCAL CODES, GROUNDING REQUIREMENTS AND ORDINANCES.
- ALL CONCRETE SLAB TOP ELEVATION SHALL BE ACCORDING TO SHEET C-2 SITE PLAN DRAWING.



- NOTE:**
- ALL PIPES, FITTINGS AND VALVES FOR FUEL SERVICE SHALL BE BLACK STEEL (SCHEDULE 40).
 - INSTALLATION OF ALL PIPES AND FITTINGS IS ABOVE GROUND. SEE DETAIL THIS SHEET.
 - INSTALL ISOLATION VALVES IN BOTH THE SUPPLY AND RETURN LINES.
 - DAY TANK SHALL BE FURNISHED WITH SUPPLY PUMP AND SOLENOID CONTROL VALVE, AND WITH RETURN PUMP AND CHECK VALVE. DAY TANK VENT SHALL BE 5' MIN. AWAY OF ANY AIR IN TAKE (DETAILED DRAWING SHALL BE INCLUDED IN THIS SHEET).
 - ALL EQUIPMENT SHALL BE FDEP APPROVED.
 - OVERFILL PROTECTION IS PROVIDED BY THE FUEL LEVEL CLOCK GAUGE.
 - BUMP POSTS FOR TANK MAY BE REQUIRED.
 - FUEL PUMP SET AND SUPPLY/RETURN FUEL LINES SIZE AS PER MANUFACTURER'S RECOMMENDATION.

PIPE CONNECTION DETAIL
N.T.S.

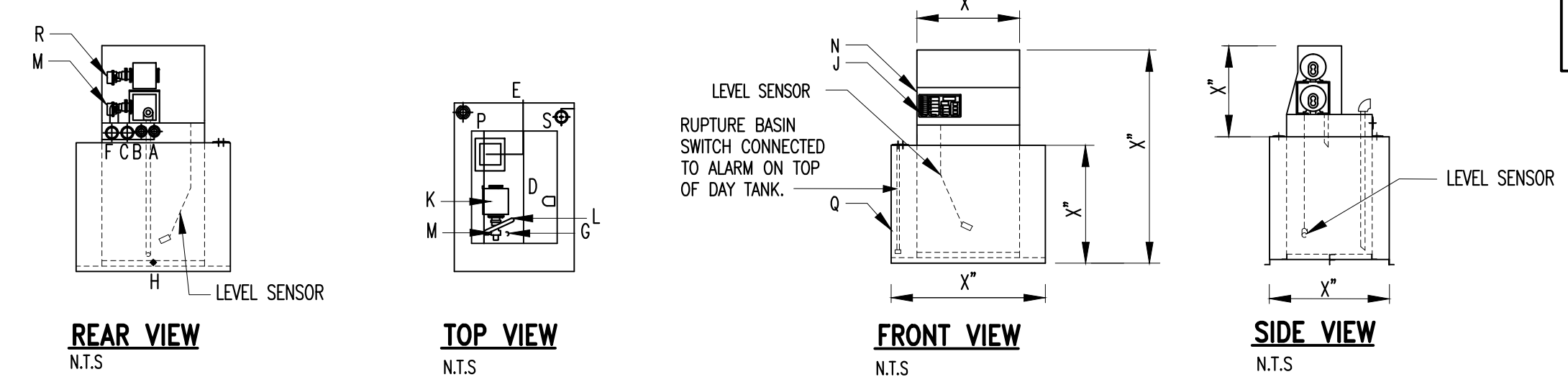
PIPE SUPPORT DETAIL
N.T.S.

FUEL SYSTEM PLAN AND PROFILE VIEW
SCALE: N.T.S.

ITEM	FITTING DESCRIPTION	ITEM	FITTING DESCRIPTION
A	1" NPT FUEL RETURN	K	(2) MOTOR, 1/3HP, 115VAC, 1PH, 60HZ
B	1" NPT OVERFLOW GRAVITY FEED TO MAIN TANK	L	3/8" NPT FITTING
C	2" NPT FOR NORMAL VENT	M	PUMP, 2 GPM HIGH LIFT
D	1" NPT ENGINE SUPPLY DIP TUBE	N	REMOVABLE NON-CONDUCTIVE COVER
E	ELECTRICAL INPUT	P	RUPTURE BASIN ALARM
F	2" NPT FOR TANK EMERGENCY VENT	Q	RUPTURE BASIN - 150%
G	3/8" DIP TUBE FOR REVERSE PUMP	R	2 GPM REVERSE PUMP
H	3/8" NPT FOR DRAIN	S	2" NPT FOR BASIN EMERGENCY VENT
J	SYSTEM 2000 PLUS - UL 508		

- NOTES:**
- DAY TANK PACKAGE INCLUDES 12 GAUGE STEEL, RUST PROOFED INTERIOR, PRIMED AND FINISHED PAINTED W/ COVER.
 - TANK PRESSURE TESTED FROM 3.5 TO 5.0 PSI.
 - REFER TO MANUFACTURER'S INSTRUCTION.

NOTES:
THIS SHEET IS A STANDARD DRAWING PROVIDED BY MDWASD AND IS TO BE MODIFIED TO MEET SPECIFIC PROJECT REQUIREMENTS. COMPLETE ALL DIMENSIONS AND ELEVATIONS DENOTED WITH AN "X".



PROPOSED DAY TANK DETAIL
N.T.S.

DRAWING HISTORY

RELEASED FOR	DATE	BY
X REVIEW 90%	06/19/15	LMS
X REVIEW 00%		
PERMIT		
BID		
AS-BUILT		

REVISIONS

No.	DESCRIPTION	DATE	BY
1	XXXXXX	06/19/15	JAC
2	XXXXXX		

APPROVALS

PROJECT MGR:	CHECKED: X.X.X.
DESIGNED: X.X.X.	DRAWN: X.X.X.
CHIEF ENGINEER: J.B.F.	
DESIGN MNGR.: R.J.A.	
SECTION HEAD: X.X.X.	

Xxxx Xxxxx, P.E.
Xxxxx Engineer
State of Florida-License No.00000
Date:

FILE NAME: 00000M03.DWG

DATE: 06/19/2015 SCALE: AS NOTED

SHEET **M-3**

DWG. No. **X-00000-D**