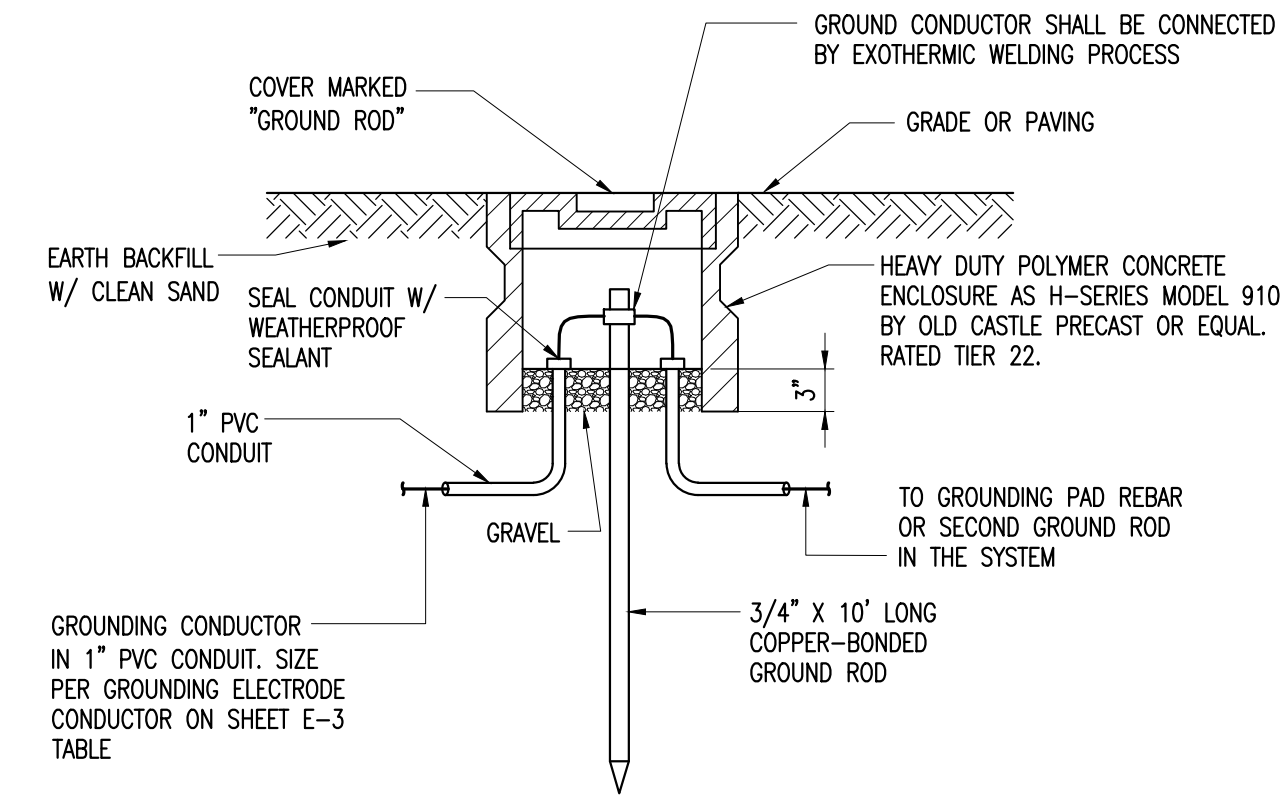


EQUIPMENT AND WIRING SCHEDULE

- ① NEW F.P.&L. OVERHEAD SERVICE _____V, 3 ϕ POLE MOUNTED TRANSFORMER, OR NEW _____V, PAD MOUNTED TRANSFORMER BY FPL.
- ② NEW PULL BOX WITH F&L CONNECTION POINT.
- ③ NEW SERVICE: 3# _____AWG & 1# _____AWG(N) IN 2" C.
- ④ NEW _____A-____V-3 ϕ -4W METER.
- ⑤ NEW 3-POLE, _____A FUSED DISCONNECT SWITCH WITH RK1 FUSES AND SOLID NEUTRAL IN NEMA 4X STAINLESS STEEL ENCLOSURE UL LISTED FOR SERVICE ENTRANCE.
- ⑥ SCADA-RTU PANEL
- ⑦ SCADA ANTENNA
- ⑧ NEW PUMP CONTROL PANEL WITH NEMA MOTOR STARTERS.
- ⑨ CONTROL JUNCTION BOX
- ⑩ 24"W x 20"H x 8"D NEMA 4X STAINLESS STEEL PUMP MOTOR CONNECTION BOX WITH INSULATED TERMINAL BLOCKS AND HINGED COVER.
- ⑪ 7.5KVA TRANSFORMER RATED 480V-120/240V-1 ϕ . PROVIDED BY CONTROL PANEL VENDOR FOR FIELD INSTALLATION BY CONTRACTOR. NEMA 3R STAINLESS STEEL.
- ⑫ NEW F&L SERVICE CONDUCTORS, COORDINATE SIZE REQUIREMENTS WITH F&L
- ⑬ 3# _____AWG, 1# _____AWG(N) & 1# _____AWG(G) - 2" C.
- ⑭ RUNS TO SCADA PANEL:
2-1" C. FOR CONTROLS (ANALOG)
1-1/2" C. FOR CONTROLS (DISCRETE)
1-1" C. - 2#12 & 1#12G (120V POWER)
2" C. WITH ANTENNA CABLE.
- ⑮ 2" C. WITH ANTENNA CABLE.
- ⑯ NEW SERVICE GROUND: 1#4 AWG CU TO GROUND ROD AND CONCRETE BASE RE-BARS.
- ⑰ 2#12 & 1#12G-3/4" C (120V POWER)
- ⑱ 3/4" C. FOR VALVE PIT FLOOD FLOAT
- ⑲ 1" C. FOR PRESSURE TRANSMITTER W/ MFG. CABLE
- ⑳ 3# _____AWG & 1# _____AWG G. IN 2"
- ㉑ 2" SPARE CONDUIT TO WET WELL
- ㉒ 18 AWG TWISTED SHIELDED PAIR (Belden Cable 9341) IN 1" CONDUIT TO INST. CONNECTION BOX
- ㉓ 1" SPARE CONDUIT TO WET WELL
- ㉔ 6#14 AWG IN 1" C. TO INSTRUMENTATION CONNECTION BOX
- ㉕ EYS TYPE SEALING FITTING
- ㉖ 1" C. W/ MANUFACTURER SUPPLIED CABLE FOR LEVEL TRANSDUCER
- ㉗ 1" C. W/ (3) MANUFACTURER SUPPLIED CABLES FOR FLOATS SWITCHES
- ㉘ 2" C. WITH MANUFACTURER SUPPLIED MOTOR CABLE.
- ㉙ NEMA 7 AND NEMA 4 CONDUIT OUTLET BOXES FOR PUMP PUMP AND INSTRUMENTATION CONNECTION
- ㉚ TRANSFORMER PRIMARY: 2#10 & 1#10(G)-1" C.
- ㉛ TRANSFORMER SECONDARY: 2#8, 1#8(N) & 1#10(G)-1" C.



MIAMI-DADE COUNTY
Delivering Excellence Every Day
WATER & SEWER DEPARTMENT
3071 SW 38TH AVENUE
MIAMI, FL 33146-1520
305-665-7471
www.miamidade.gov/water
UTILITY ENGINEERING & CONSTRUCTION DIV.
MIAMI, FL 33133
786-552-4440

PCTS 0000/CONTRACT X-000 or RPQ/ERX0000
PUMPING STATION No. 0000 (STD. UPDATE 2019)
SUBMERSIBLE PUMPING STATION WITHOUT GEN.
PROJECT OFFICIAL ADDRESS
ELECTRICAL RISER DIAGRAM AND DETAILS

DRAWING HISTORY

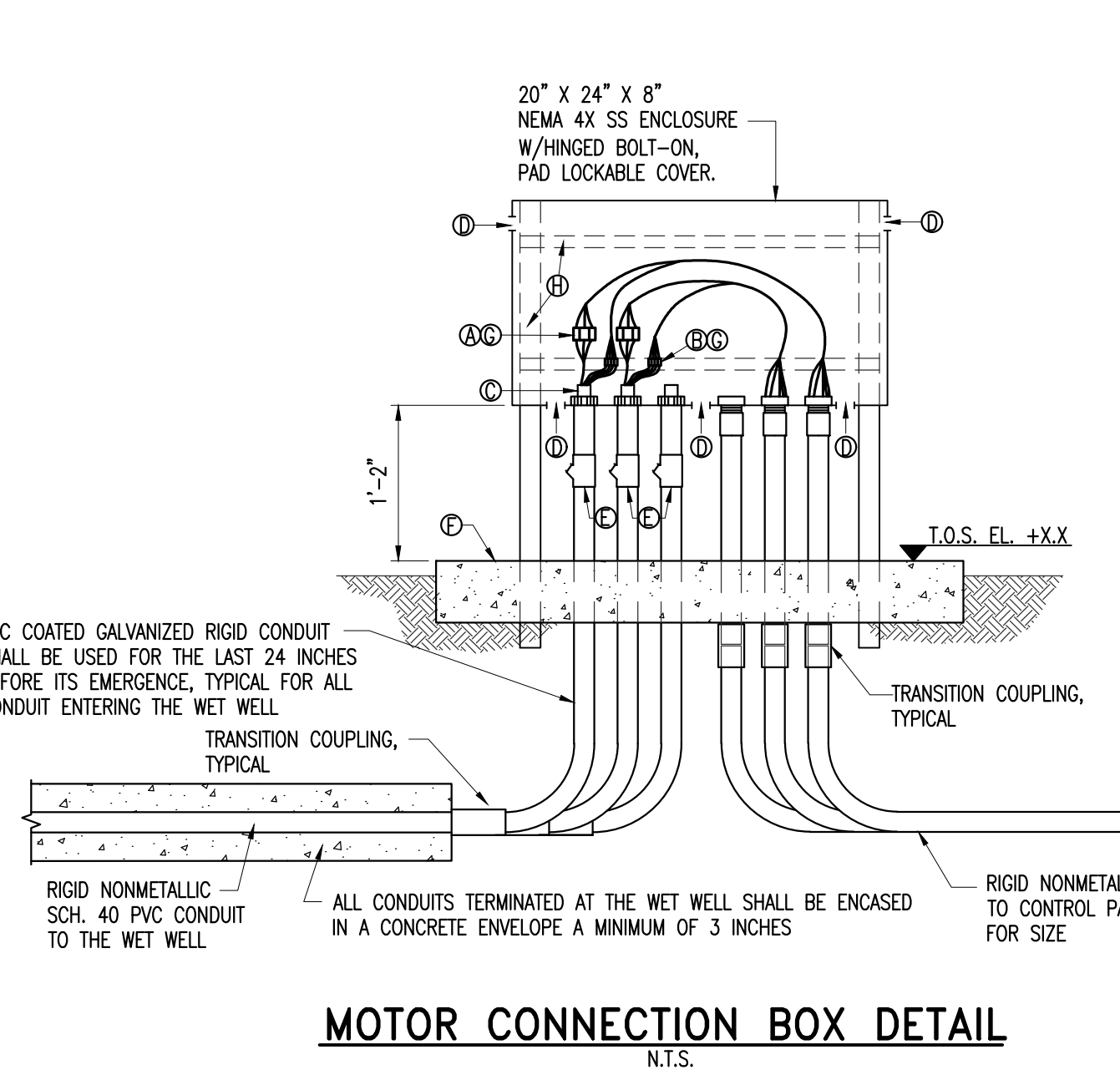
RELEASED FOR	DATE	BY
X. REVIEW 00%	xx/xx/xx	xxxx
REVIEW 00%		
PERMIT		
BID		
AS-BUILT		

REVISIONS

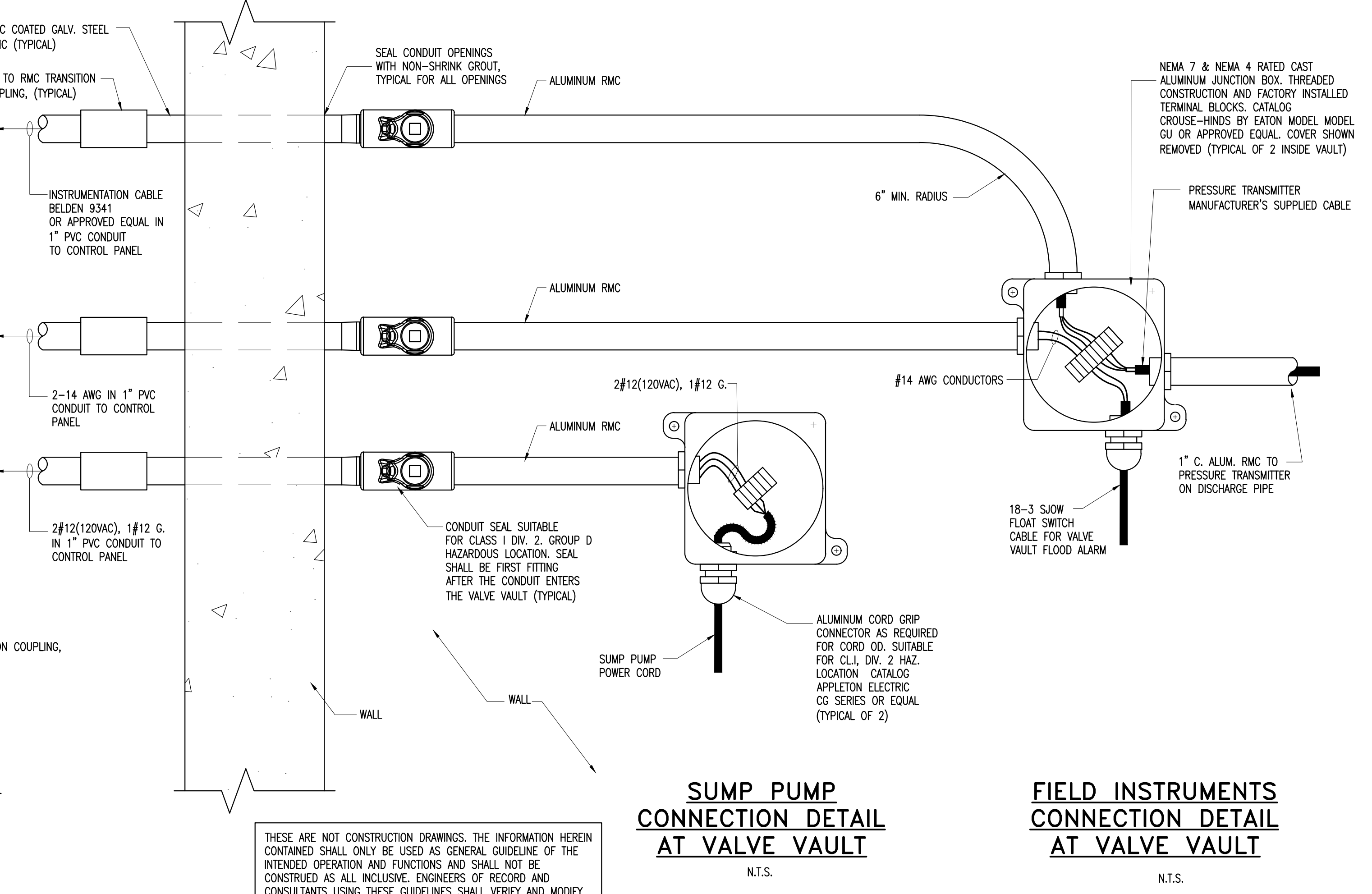
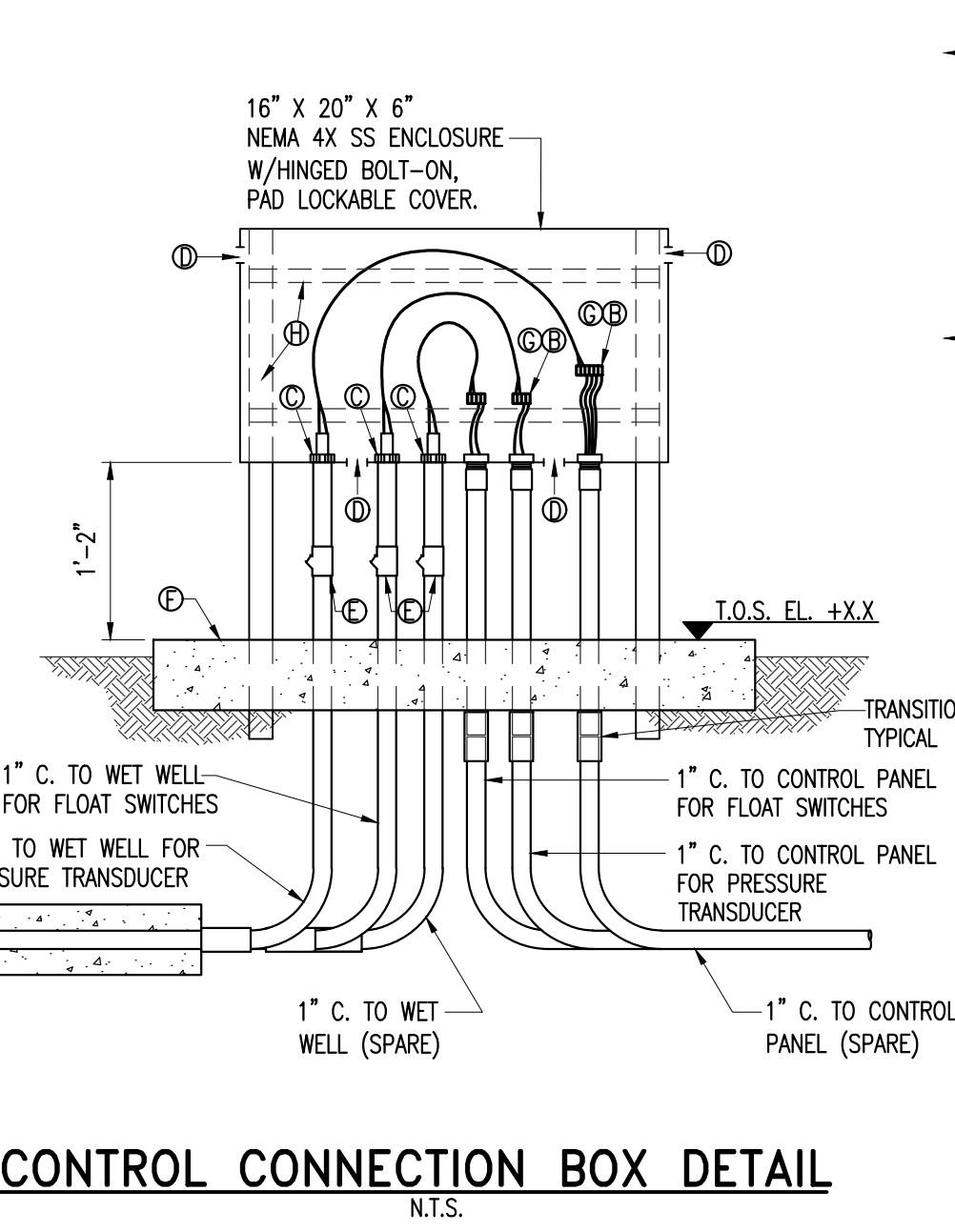
No.	DESCRIPTION	DATE	BY
1	xxxxxx	xx/xx/xx	xxxx
2	xxxxxx		

APPROVALS

DESIGNED: X.X.X. DRAWN: X.X.X.
UNIT HEAD: X.X.X.
PROJECT MGR.: X.X.X.



- Ⓐ 6-POLE POWER INSULATED TERM BLOCK PANEL MOUNT ALLEN BRADLEY BULLETIN 1492 SIZED AS REQUIRED.
- Ⓑ 6-CIRCUIT CONTROL INSULATED TERM BLOCK PANEL MOUNT ALLEN BRADLEY BULLETIN 1492
- Ⓒ CABLE CORD FITTING WITH GLAND NUT & NEOPRENE BUSHING EQUAL TO CROUSE HINDS CGFP SIZE OR AS REQUIRED FOR CABLE O.D.
- Ⓓ 1/8" DRAIN AND VENTILATION HOLES
- Ⓔ CONDUIT SEAL SUITABLE FOR CLASS I, DIV. 1, GROUP D HAZ. LOCATION
- Ⓕ 3' x 3' x 6" CONCRETE SLAB. SEE STRUCTURAL DRAWINGS
- Ⓖ COAT WITH CLEAR URETHANE SEAL ELECTRICAL-ELECTRONIC INSULATOR AS CRC 'U' 02049
- Ⓗ 2" POST GALV. STL. PIPE SCH. 40 FILLED WITH CONCRETE AND 1-5/8" x 1-5/8" SS UNISTRUT CHANNELS FOR SUPPORT



THESE ARE NOT CONSTRUCTION DRAWINGS. THE INFORMATION HEREIN CONTAINED SHALL ONLY BE USED AS GENERAL GUIDELINE OF THE INTENDED OPERATION AND FUNCTIONS AND SHALL NOT BE CONSTRUED AS ALL INCLUSIVE. ENGINEERS OF RECORD AND CONSULTANTS USING THESE GUIDELINES SHALL VERIFY AND MODIFY ANY REQUIREMENT NOT NECESSARILY SHOWN AS MAY BE REQUIRED BY ANY AND ALL APPLICABLE CODES AND STANDARDS.