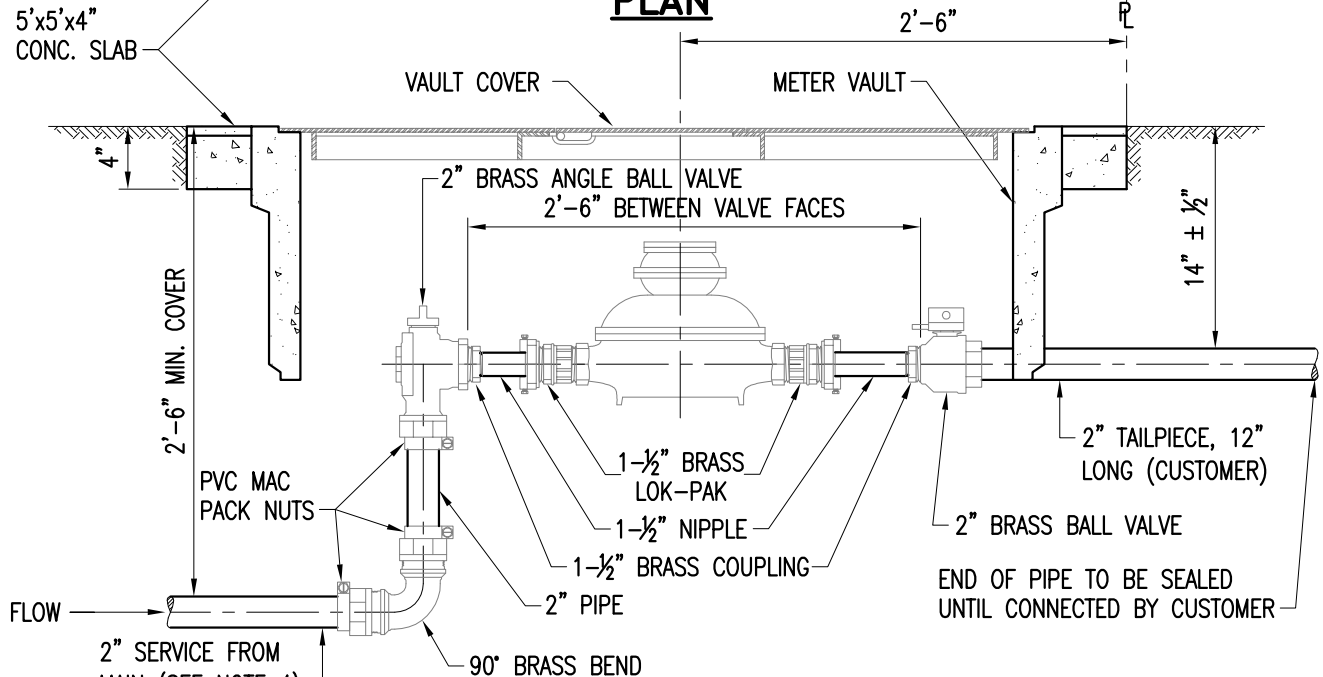


PLAN



SECTION

NOTES:

1. USE 2'x4' METER VAULT.
2. METER BOX TO BE IN 5'x5'x4" THICK CONCRETE SLAB WITH 6x6-W1.4xW1.4 W.W.M.
3. A TEN GAUGE DIRECT BURY STRANDED COPPER TRACER WIRE TO BE TAPED CONTINUOUSLY WITH POLY OR DUCT TAPE TO THE SERVICE FOR LOCATION PURPOSES. WIRE MUST BE ATTACHED TO RECLAIMED WATER MAIN AND EXTEND INTO THE METER BOX.
4. USE 2" BLUE COLOR HDPE FOR POTABLE WATER SERVICE. USE 2" PURPLE COLOR HDPE FOR RECLAIMED WATER SERVICE.
5. METERS WILL NOT BE INSTALLED IF THE METER BOX IS IN A DRIVING SURFACE.
6. FOR SIDEWALK CONDITIONS, METER BOX SHALL BE INSTALLED IN A SINGLE CONCRETE SIDEWALK FLAG.
7. ALL BRASS COMPONENTS SHALL BE MARKED "NL" MEETING THE S3874 AMENDMENT TO THE SAFE DRINKING WATER ACT.

TYPICAL SERVICE PLAN	WS4.10	
2'x4' METER VAULT	WS2.17	
ITEM	CROSS REF.	SPEC. REF.



ISSUE DATE	APPROVED BY
5/31/2013	E.A.V.

STANDARD DETAIL
**TYPICAL 2" SERVICE
 INSTALLATION WITH A 1-1/2" METER**

**WS
 2.16**
 SHEET 2 OF 4