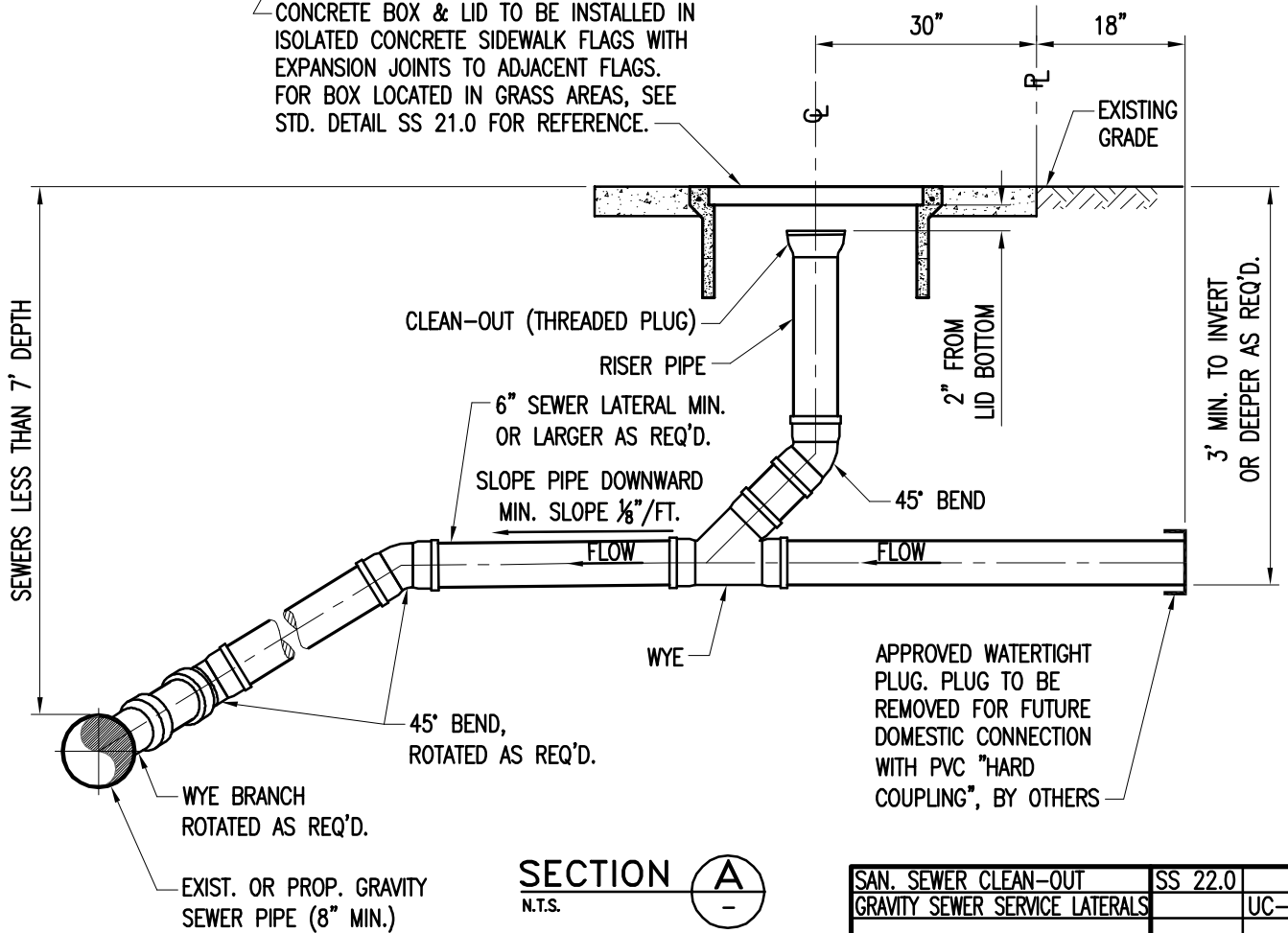


PLAN
N.T.S.

CONCRETE BOX & LID TO BE INSTALLED IN ISOLATED CONCRETE SIDEWALK FLAGS WITH EXPANSION JOINTS TO ADJACENT FLAGS. FOR BOX LOCATED IN GRASS AREAS, SEE STD. DETAIL SS 21.0 FOR REFERENCE.



SECTION
N.T.S.



SAN. SEWER CLEAN-OUT	SS 22.0	
GRAVITY SEWER SERVICE LATERALS		UC-310
ITEM	CROSS REF.	SPEC. REF.



ISSUE DATE	APPROVED BY
08/26/2010	V.F.C.

STANDARD DETAIL
GRAVITY SEWER SERVICE LATERAL FOR "SHALLOW" SEWERS

SS 1.0
SHEET 1 OF 2