

United States Air Force Reserve

Integrity - Service - Excellence

EAR TASK FORCE: MILITARY COMPATIBILITY



**Mr. Lawrence Ventura, Jr.
Homestead Air Reserve Base
Mission Sustainment Director**



UNCLASSIFIED

Homestead ARB Background

- Host: 482d Fighter Wing
- Facility of Countywide Significance (CDMP ICE-3)
- Major tenants include:
 - Customs & Border Protection
 - Florida Air National Guard
 - Florida Army National Guard
 - U.S. Southern Command
 - Special Operations Command South
 - U.S. Coast Guard
 - Golden Knights – U.S. Army Parachute Team





Homestead ARB Impact

- HARB is the one of the largest employers in southern Miami-Dade
- HARB employs active-duty, reservists, and civilian personnel
- Future Operations
 - F-35 basing considerations



HARB is not just a military installation, it's a community anchor.



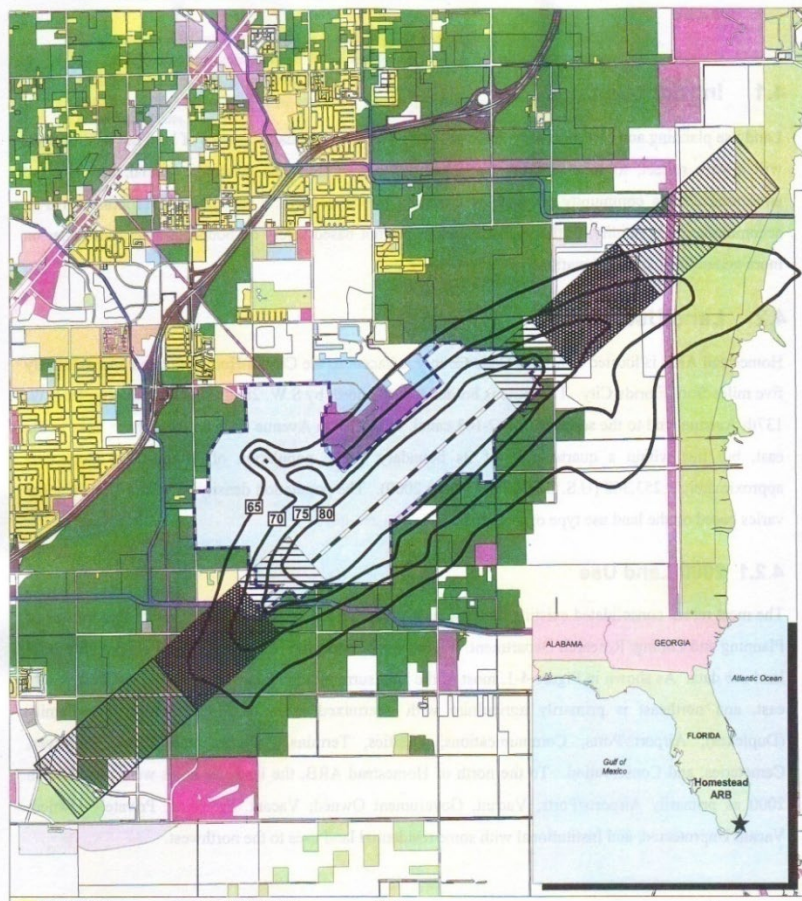
Encroachment

- Encroachment: Actions or activities that would impact current or future military activities, including growing competition for land and airspace
- Urban encroachment poses a significant threat to HARB and its operations

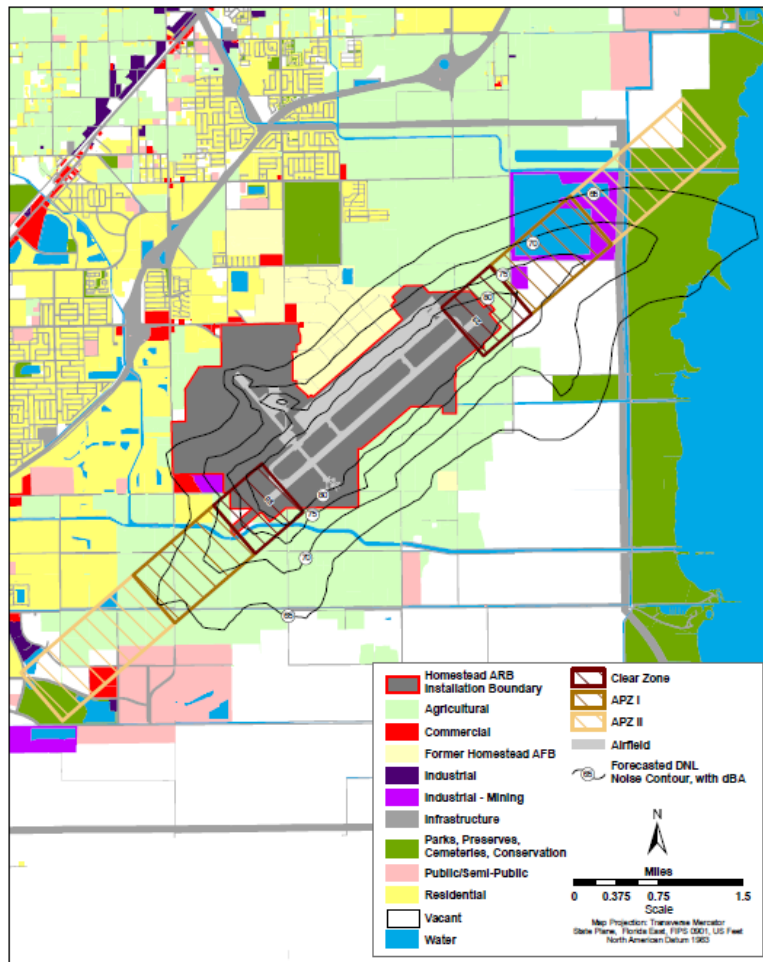


UNCLASSIFIED

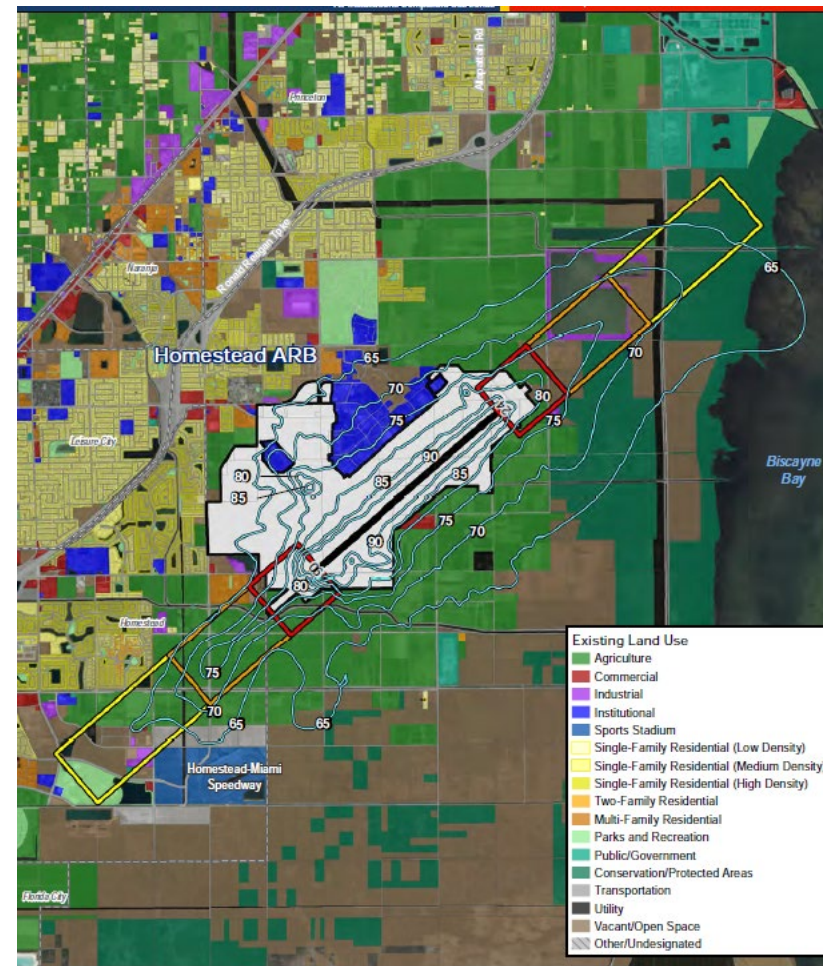
Evolving Land Use Around HARB



2004



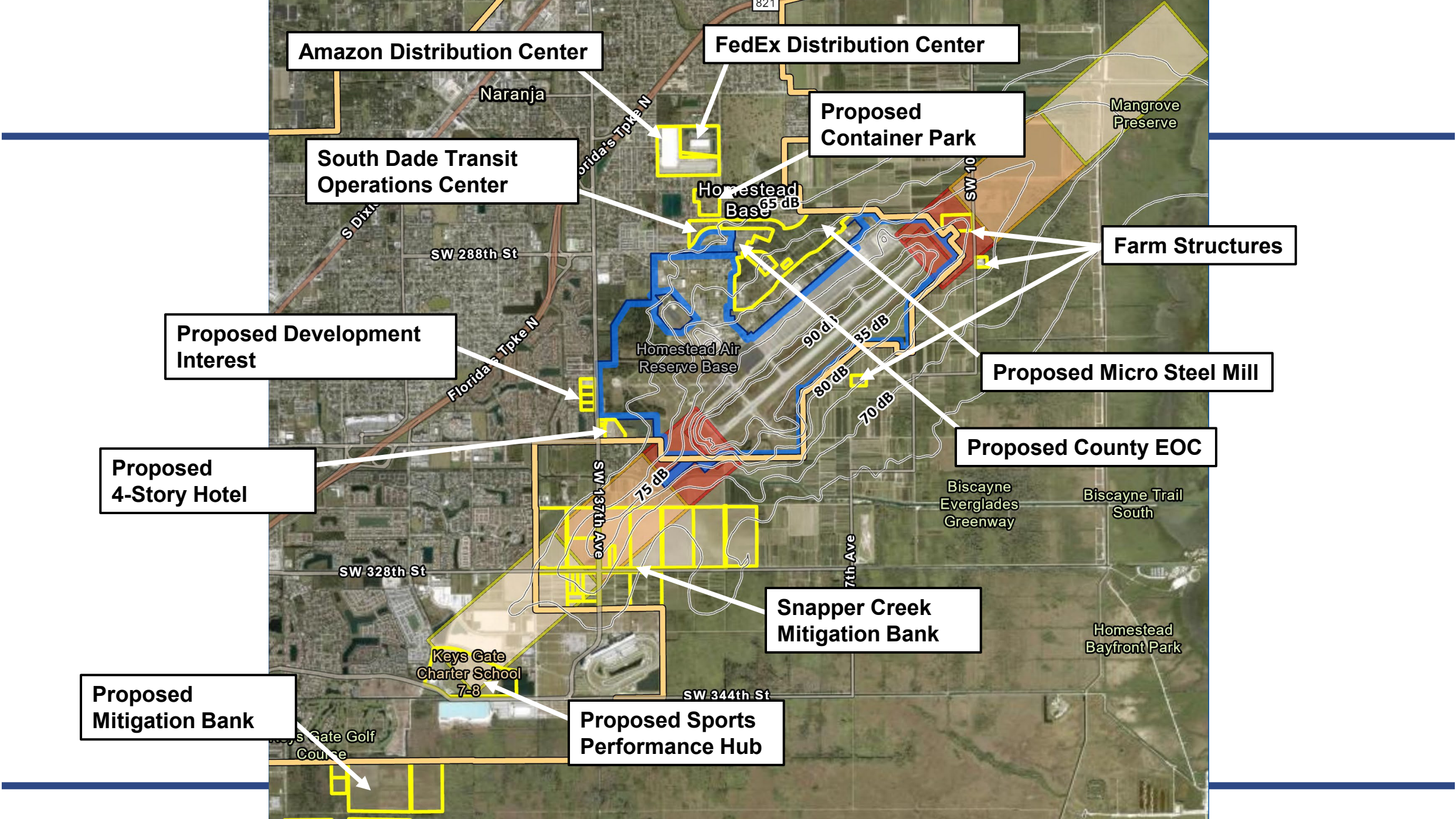
2007



2020

As of:

UNCLASSIFIED



Amazon Distribution Center

FedEx Distribution Center

Proposed Container Park

South Dade Transit Operations Center

Farm Structures

Proposed Development Interest

Proposed Micro Steel Mill

Proposed 4-Story Hotel

Proposed County EOC

Snapper Creek Mitigation Bank

Proposed Mitigation Bank

Proposed Sports Performance Hub

Naranja

Mangrove Preserve

Homestead Base

Homestead Air Reserve Base

Biscayne Everglades Greenway

Biscayne Trail South

Homestead Bayfront Park

SW 288th St

SW 328th St

Keys Gate Charter School 7-8

SW 344th St

821

Florida Turnpike N

SW 137th Ave

7th Ave

SW 10

65 dB

90 dB

85 dB

80 dB

70 dB

75 dB



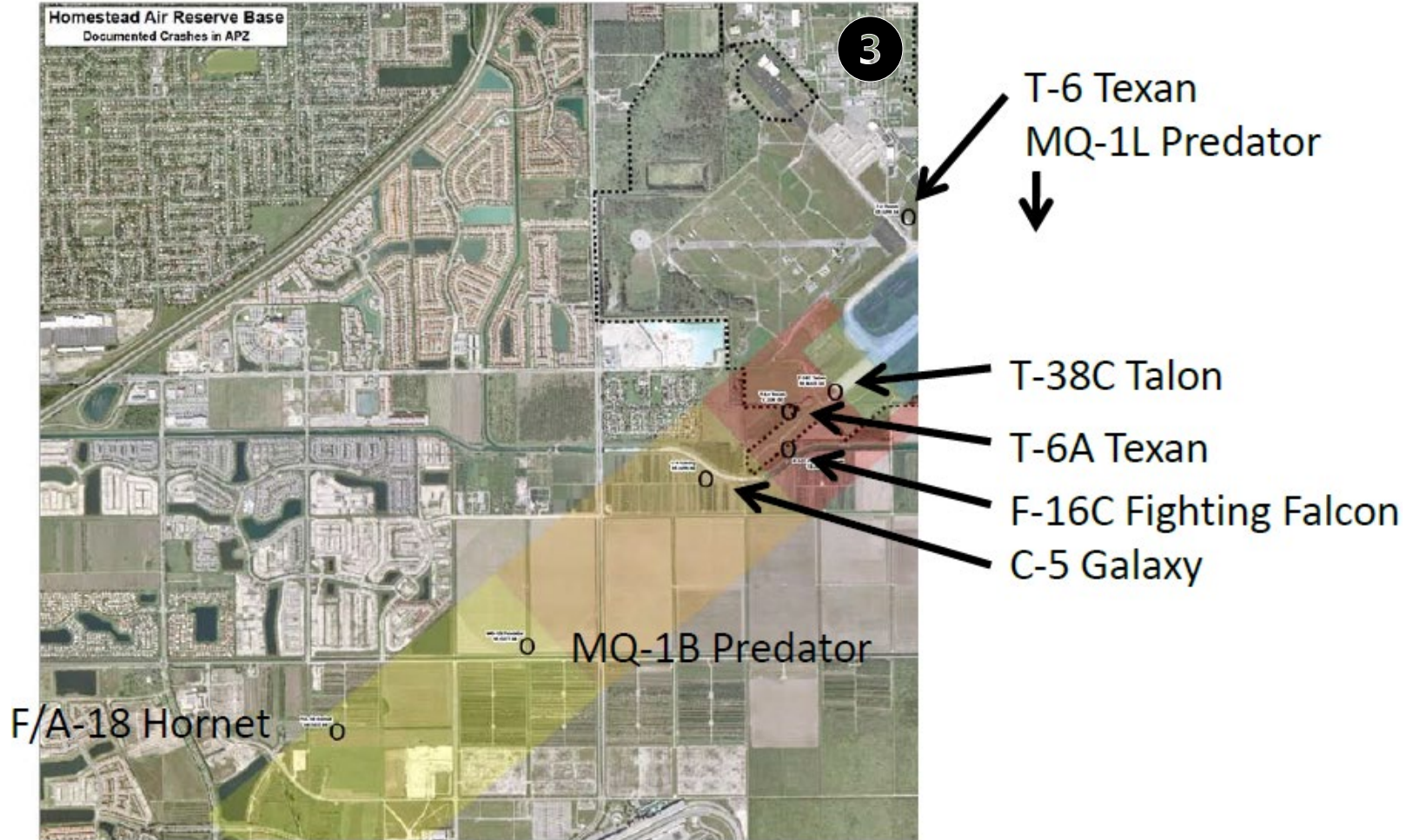
Encroachment Hazards



(1) F-16 Made an emergency landing short of the runway after losing engine power (2) F-15C Pilot with serious injuries during air combat maneuver training (3) F-15C Pilot with minor injuries during flight training (4) C-130 crash into a hotel (5) Crash into a residential community (6) Crash on to farmland



Encroachment Hazards

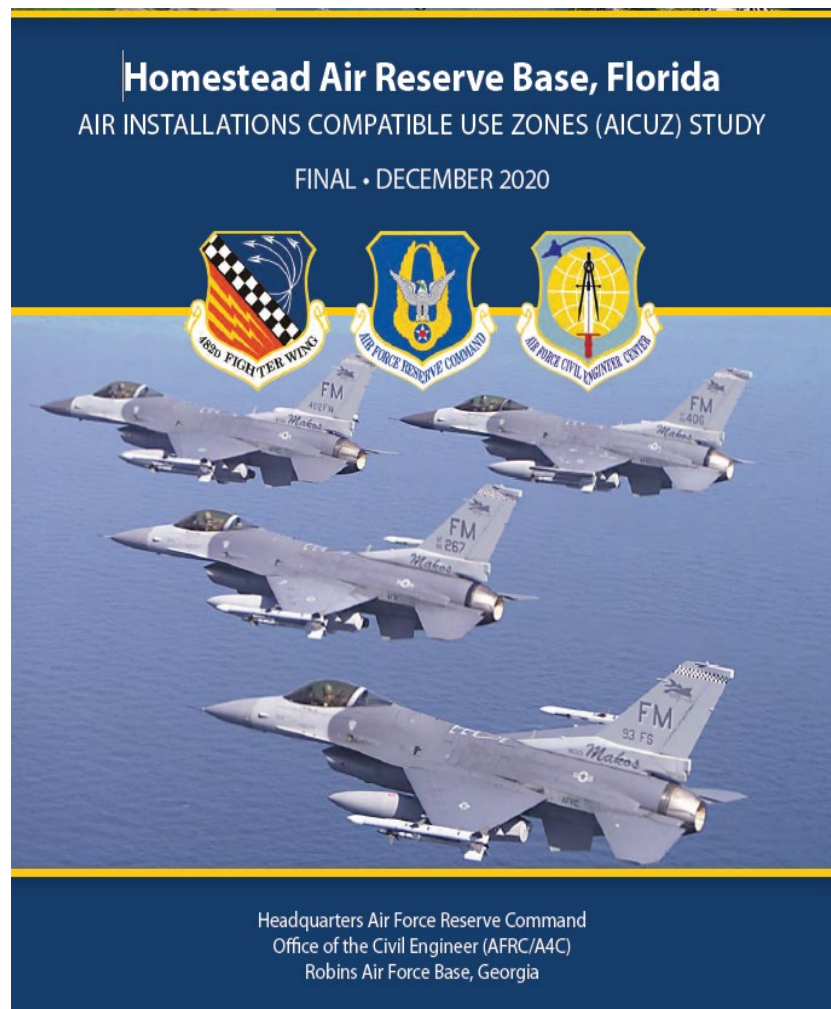


(1) Crash into residential building (2) Crash into a hotel (3) Modeled Aircraft Accident Scenarios



UNCLASSIFIED

Air Installations Compatible Use Zones (AICUZ)

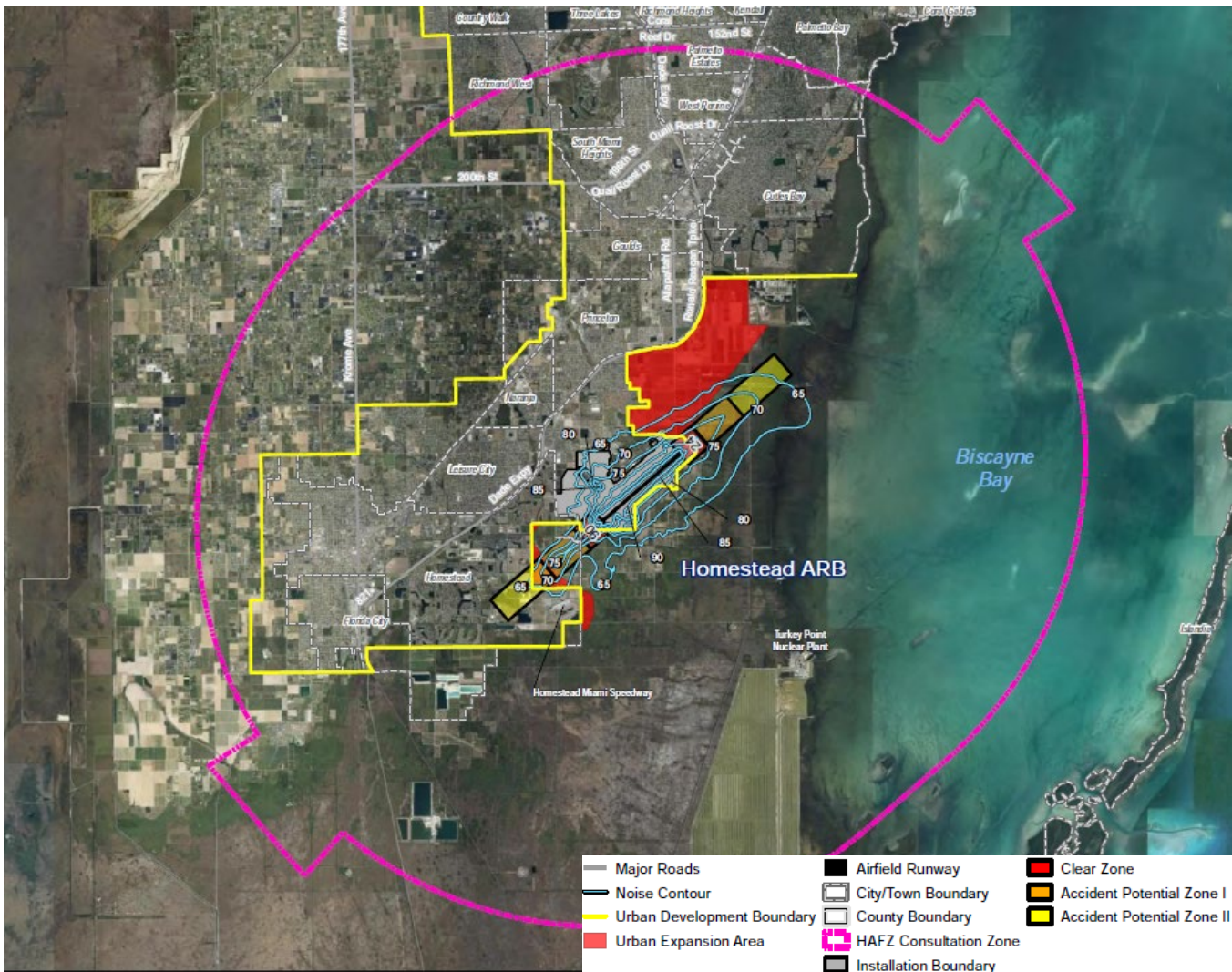


The goal of the AICUZ program is to protect the health, safety, and welfare of those living and working near air installations while sustaining the military's operational mission.

The Air Force Reserve Command accomplishes this goal by promoting proactive, collaborative planning for compatible development. The Air Force Reserve Command provides the AICUZ Study to **aid in development of local planning mechanisms** that will protect the public safety and health, as we as the operation capabilities of HARB.

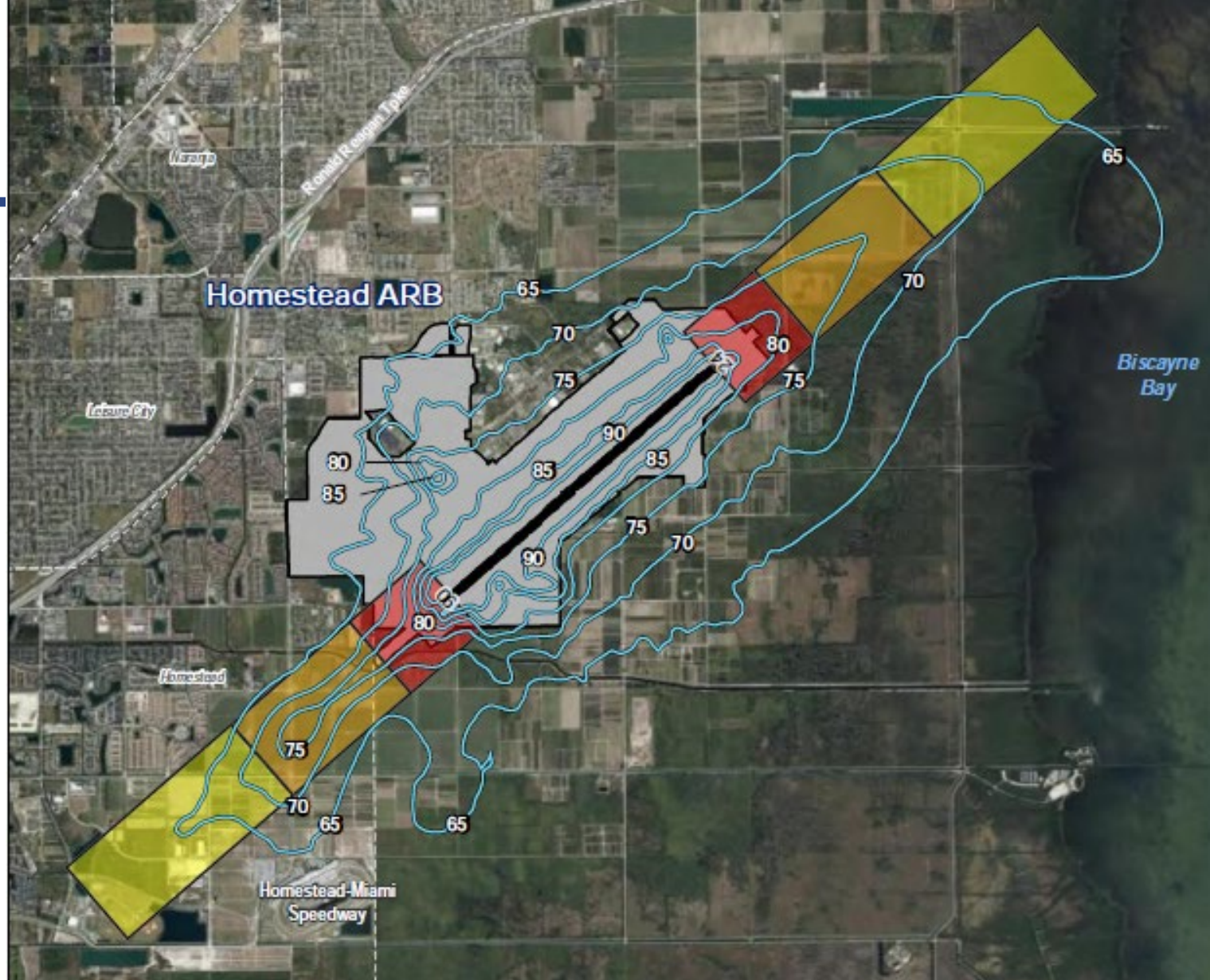


HARB Installation Footprint



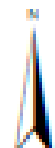
Beyond the fence line, **HARB's footprint extends into the community**, and nearby planning decisions directly affect mission sustainment:

- Clear Zone and Accident Potential Zones I and II
- Noise Contours
- Hazards to Aircraft Flight Zone (contains the Imaginary Surfaces)



Legend

- | | | |
|----------------------------|----------------------------|---------------------------|
| Major Roads | Airfield Runway | Clear Zone |
| Noise Contour (2020 AICUZ) | City/Town Boundary | Accident Potential Zone I |
| Installation Boundary | Accident Potential Zone II | |



F-15 Flight Path Noise Simulation

Homestead Air Reserve Base

F-15 Noise Simulation Video

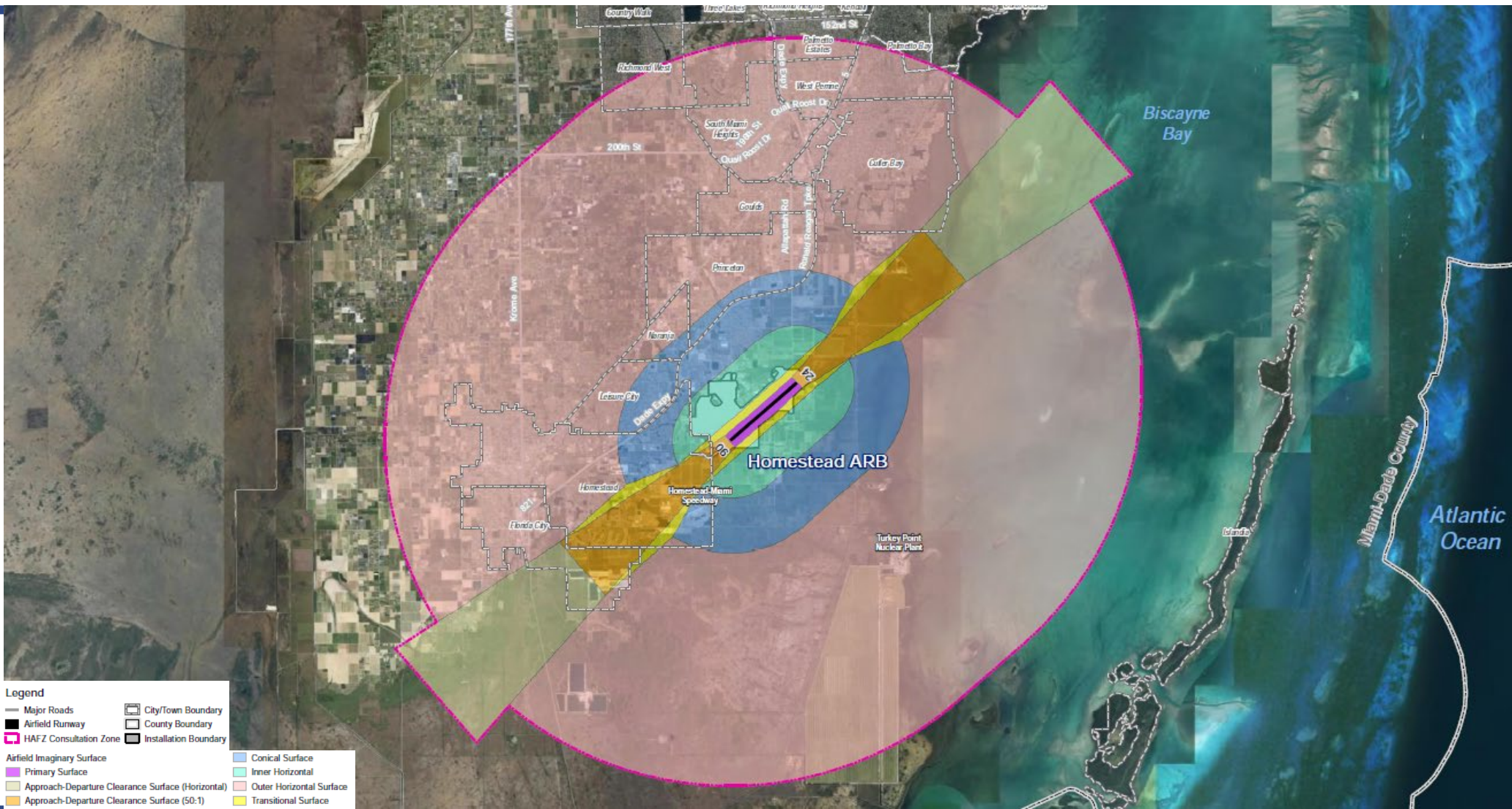
Location:	Homestead, FL
Vehicle:	F-15E
Engine:	F100-PW-220
Runway:	24
Operation:	Afterburner Departure





UNCLASSIFIED

HARB Installation Footprint (cont.)



As of:

UNCLASSIFIED



State Protections

Florida enacted F.S. 163.3175 (Military Compatibility Law) to ensure development near military installations and ranges remains compatible with military missions and public safety.

163.3175 (1) The Legislature finds that incompatible development of land close to military installations can adversely affect the ability of such an installation to carry out its mission. The Legislature further finds that such development also threatens the public safety because of the possibility of accidents occurring within the areas surrounding a military installation. In addition, the economic vitality of a community is affected when military operations and missions must relocate because of incompatible urban encroachment. Therefore, the Legislature finds it desirable for the local governments in the state to cooperate with military installations to encourage compatible land use, help prevent incompatible encroachment, and facilitate the continued presence of major military installations in this state.



CHAPTER 33 – ZONING / ARTICLE XXXV. HOMESTEAD AIR RESERVE BASE ZONING

Sec. 33-291.1. - Intent.

In accordance with Chapter 333, Florida Statutes, and Policies LU-4H and AV-7C of the Comprehensive Development Master Plan (CDMP), it is the intent of the Board of County Commissioners to establish the Homestead Air Reserve Base (HARB) zoning regulations to enhance and promote the compatibility of adjacent land uses and development with the HARB and the protection of HARB operations and activities.

This article regulates land uses around the HARB through Accident Potential Zones, Noise Contour Zones, and Airport Height Zones designated around the HARB's perimeter.



Military Compatibility Way Ahead

- Florida Legislature finds that incompatible development threatens the public safety near military installations, therefore per FS 163.3175, the **County should continue** “to **cooperate with military installations to encourage compatible land use**, help prevent incompatible encroachment, and facilitate the continued presence of major military installations...”
- **Update the CDMP and County Code** to reflect the most current Air Installations Compatible Use Zones (AICUZ) Study guidance. Gaps in compatibility standards and overlay boundaries can create opportunities for incompatible land uses and incremental encroachment.
- **Continue to work with HARB** to mitigate off-base vulnerabilities that can impact military readiness. Community resiliency is an important part of land use compatibility with HARB.



Questions?

