



Miami-Dade Water and Sewer Department

Laying the Foundation for a Future Ready Utility

WASD AT A GLANCE



The Miami - Dade Water and Sewer Department (WASD) is the largest water utility in the Southeastern United States , providing high - quality, affordable water & wastewater services to the people of Miami - Dade County.

MAJOR MANDATES & FLAGSHIP PROGRAMS



Federal Consent Decree & State Consent Orders

Mandated wastewater upgrades to reduce overflows, eliminate illegal connections, and ensure compliance



Ocean Outfall Legislation (OOL)

State-mandated elimination of ocean discharges via \$2B in deep injection, reuse, and plant upgrades



Connect 2 Protect

Countywide septic-to-sewer conversions supporting environmental resilience



South District Expansion

Provides infrastructure necessary to support population and economic growth, by augmenting capacity by 16%.



Water Reset

Reinvestment into the water system to address critical needs across treatment plants & the distribution network

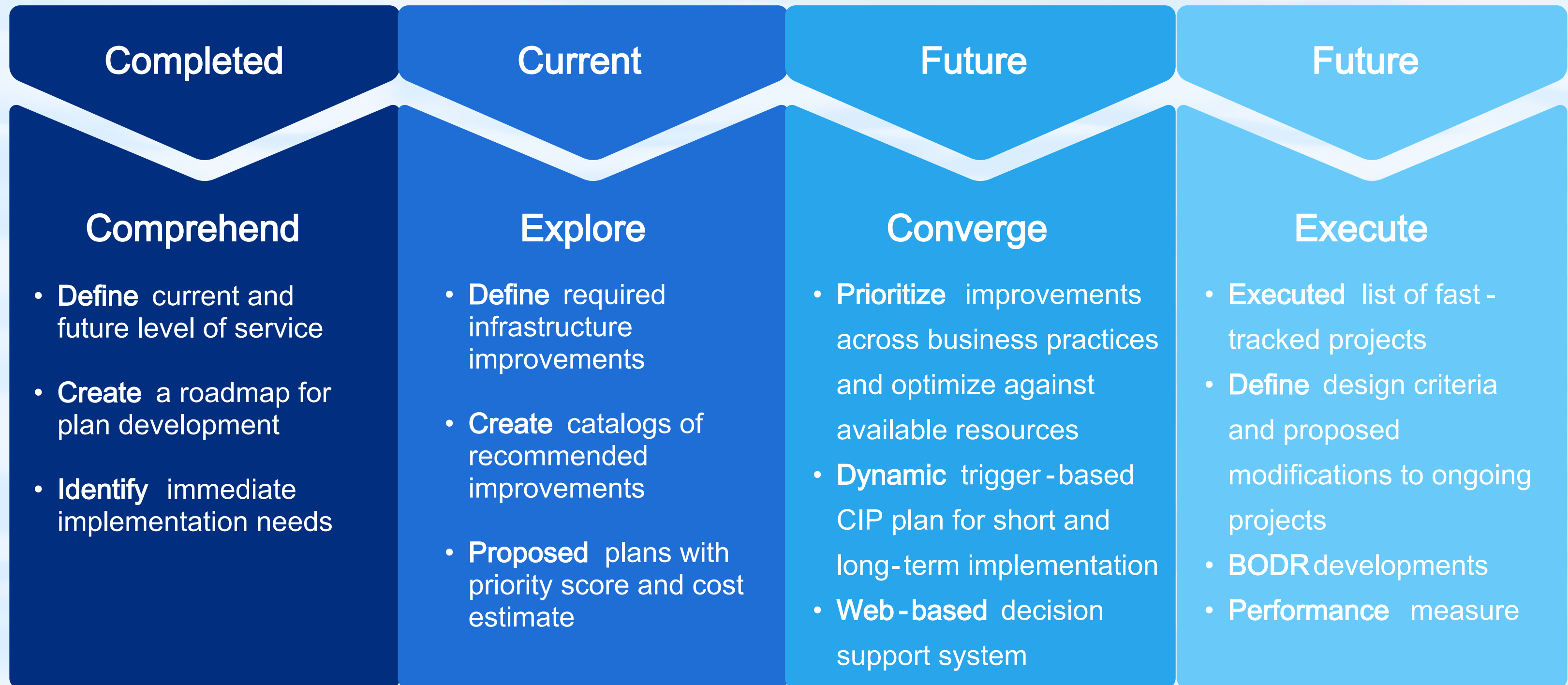


Ops Centers

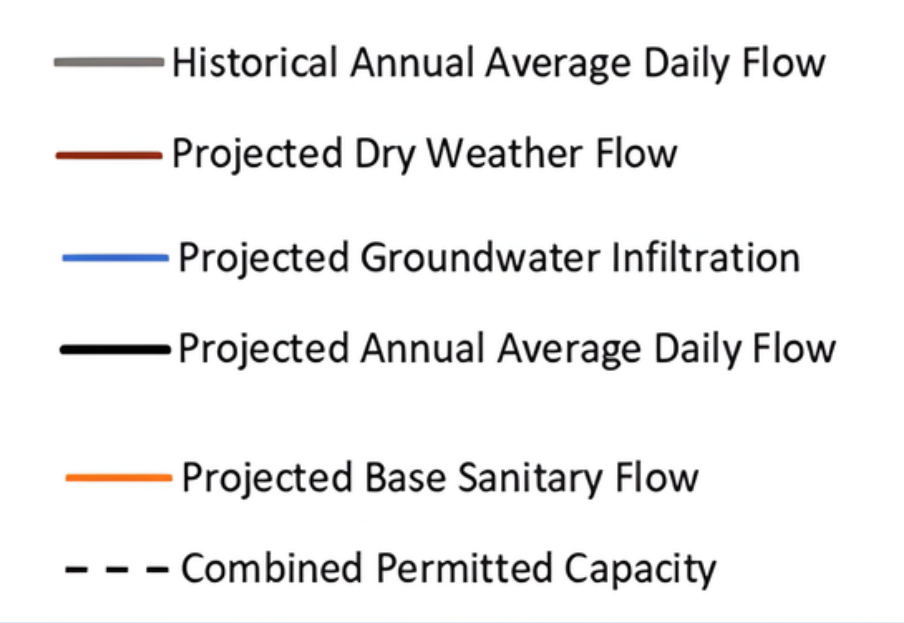
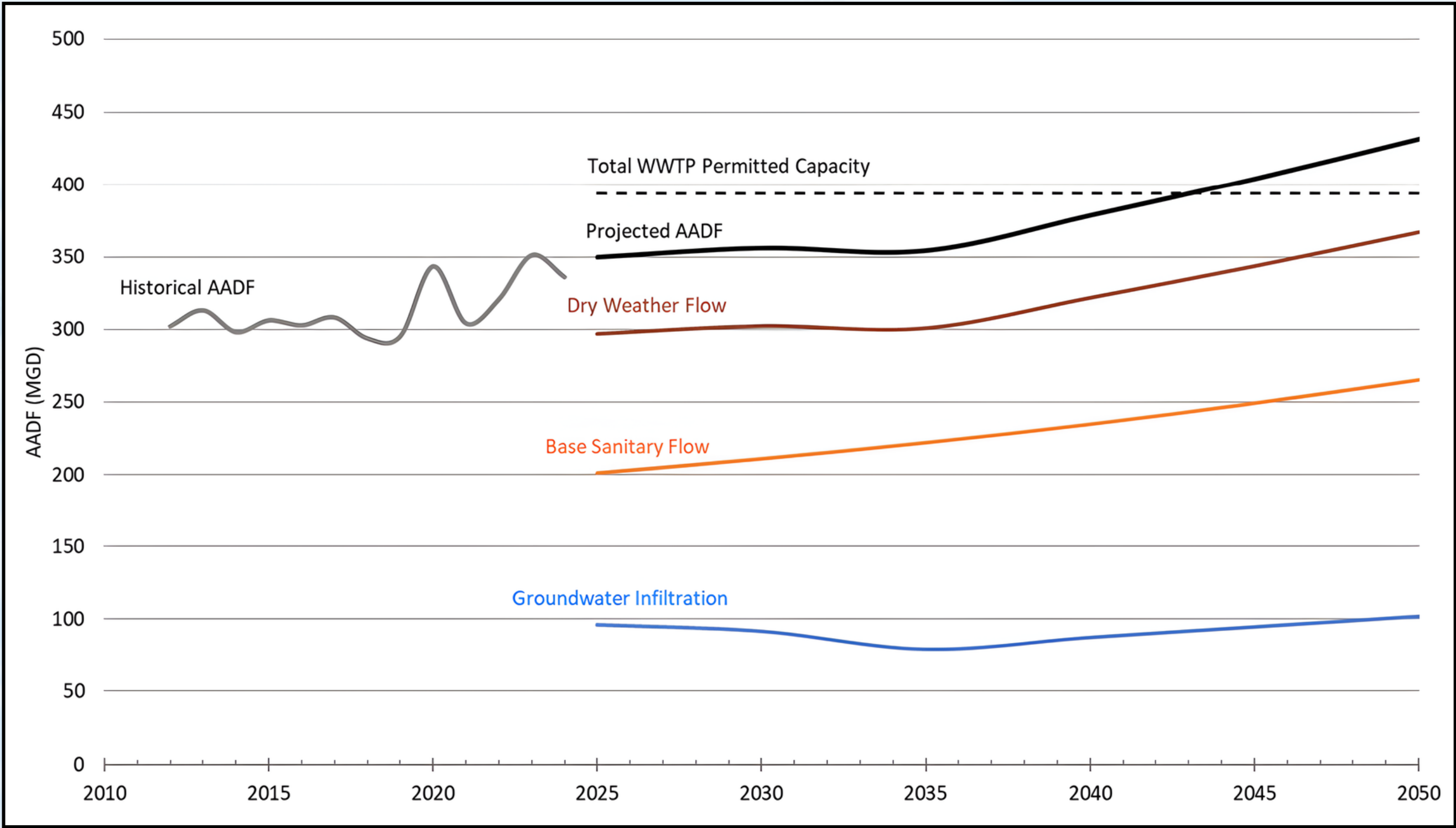
Modernizing operations via new storm-hardened centers to enhance security, reliability, and readiness

INTERGRATED MASTER PLAN

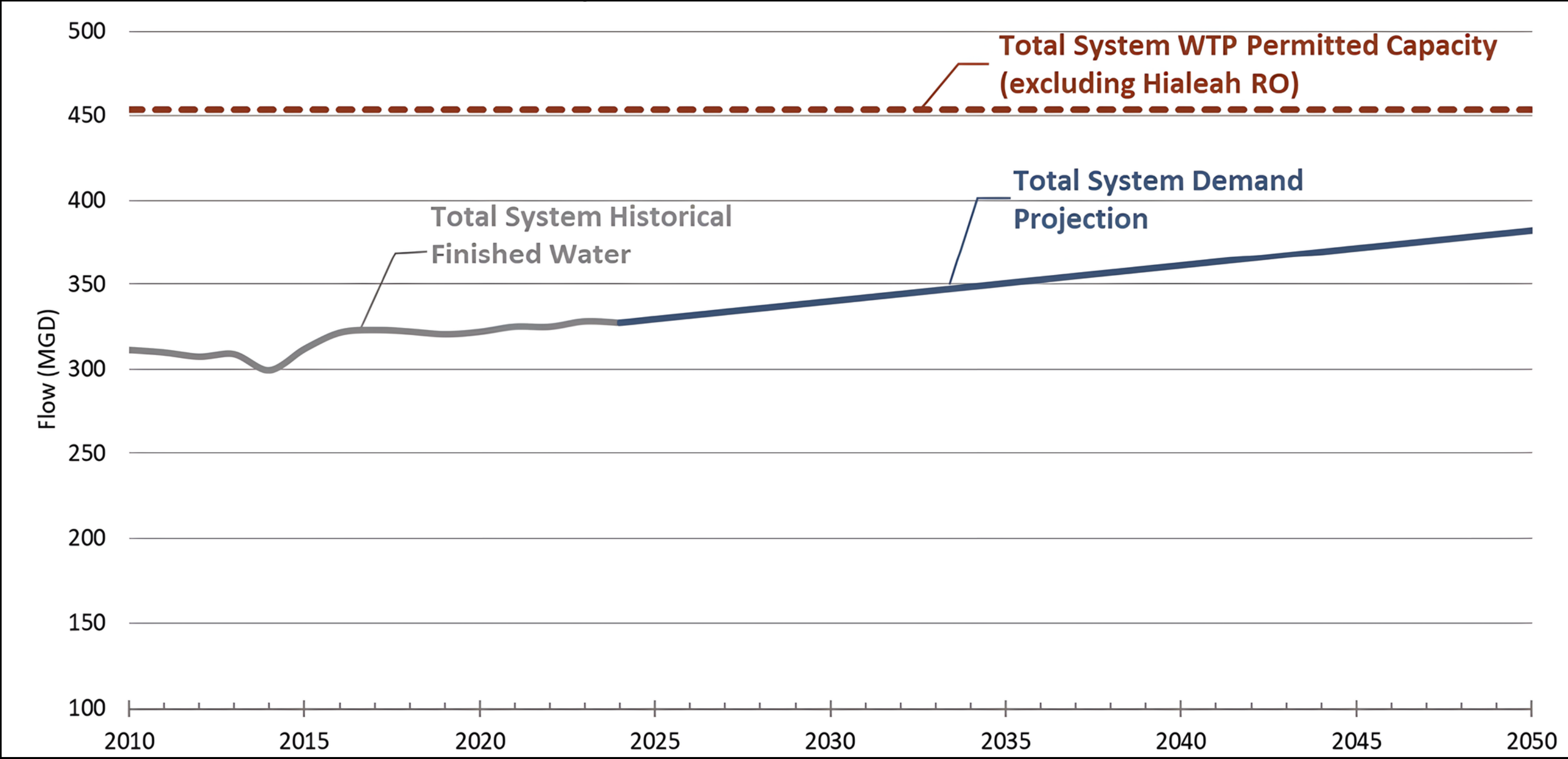
The master plan will define the capital improvement program
for Miami -Dade County Water and Sewer through 2050



SYSTEMWIDE WASTEWATER FLOW PROJECTIONS



TOTAL SYSTEM FINISHED WATER DEMAND



CAPITAL IMPROVEMENT PLAN



Investment Drivers	CIP BUDGET FY 25-31
Consent Decree Program	\$1,366
Ocean Outfall Legislation/SD Expansion	\$2,108
Pump Station Resilience/Flow Reduction	\$643.3
Connect 2 Protect	\$90
Water Reset Program (incl AMI)	\$668.8
Capital Projects	\$4,092
Totals	\$8,968

WASD and the CDMP



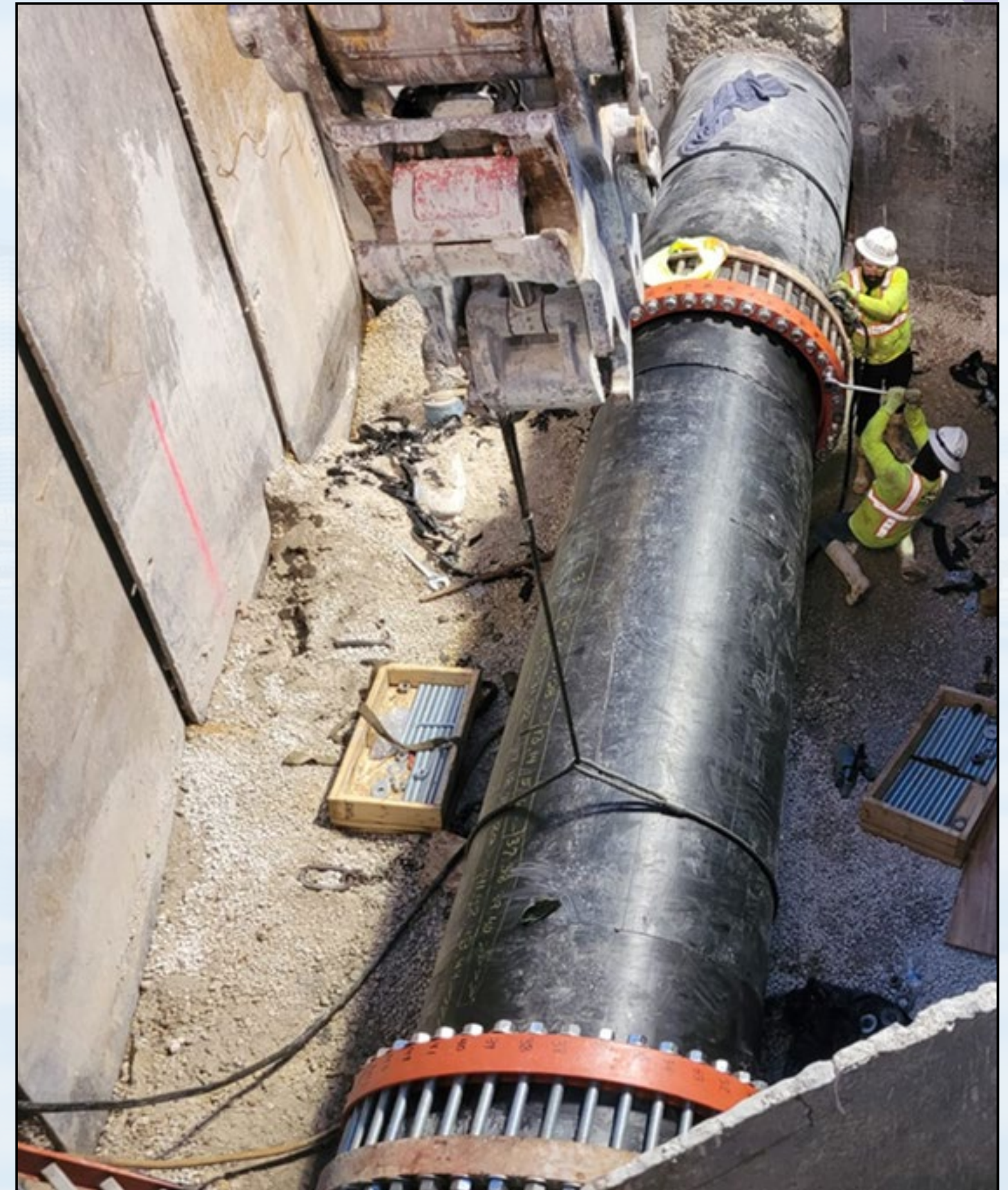
- Water and sewer planning is essential to implementing the CDMP through 2050
- The Water and Sewer CDMP Subelement provides a stronger framework linking:
 - **Land use** and concurrency
 - **Capital investment** and growth management
 - **Septic reduction** and environmental protection
 - **Conservation**, alternative water supply, and resilience
- **Infrastructure decisions help shape where growth can be supported** and where public investment should be prioritized

CDMP Water and Sewer Element: Policy Framework

- WS-1: Plan and provide potable water supply and sanitary sewage disposal countywide in conformance with the Future Land Use Element
- WS-2 / WS-3: Maintain procedures to correct deficiencies and ensure adequate future capacity and level of service
- WS-4: Reduce reliance on noncentralized wastewater systems within the UDB
- WS-5 / WS-6 / WS-7: Advance water conservation, alternative water supply, and longrange water supply planning

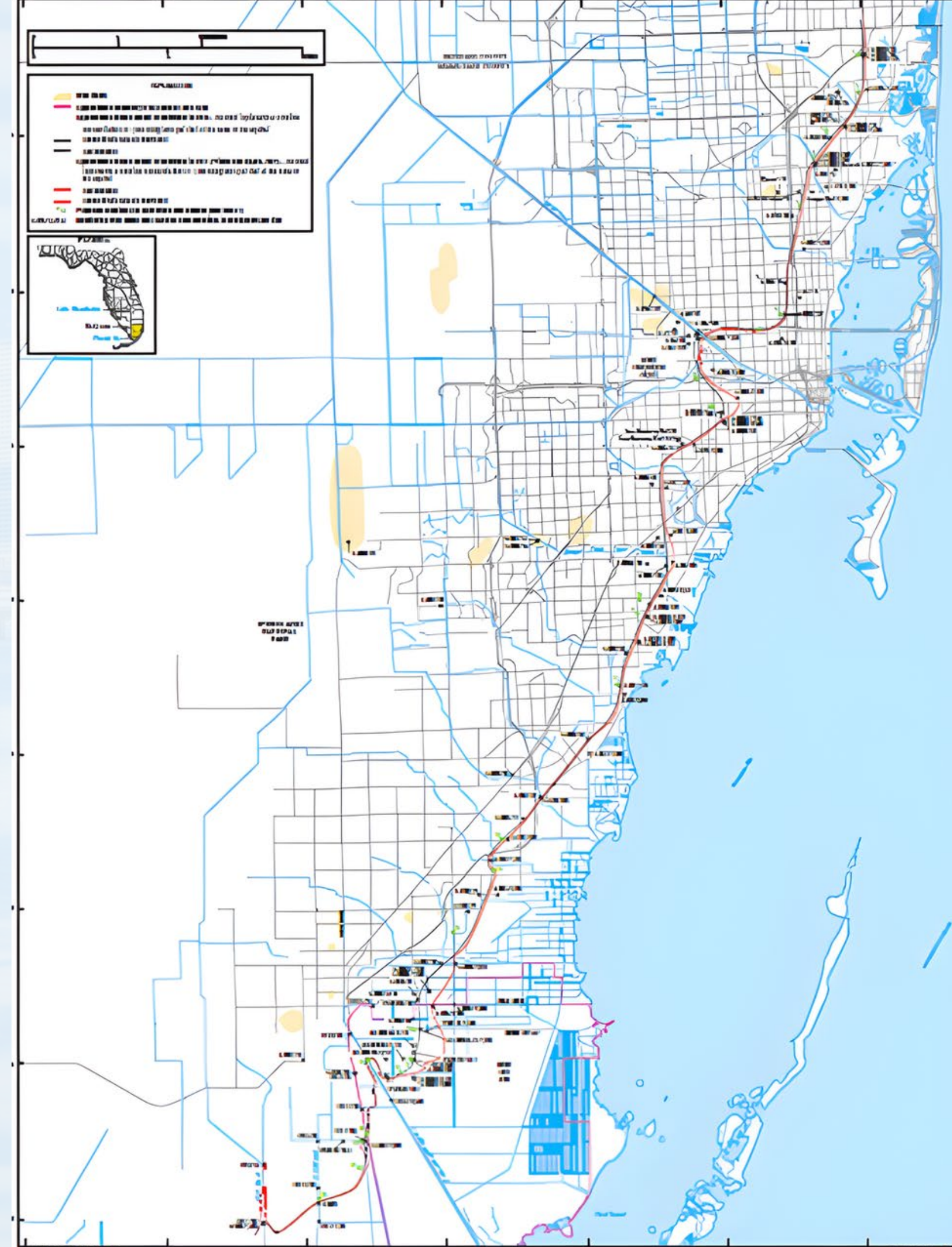
Planned Water and Sewer Improvements

- **Capital improvements** are prioritized to:
 - **Protect public health**, safety, and environmental integrity
 - **Eliminate system deficiencies** and performance constraints
 - **Improve operational** efficiency
 - **Expand capacity** cost-effectively within the UDB
 - **Support targeted growth** areas such as Urban Centers and Rapid Transit Activity Corridors
- **WASD planning is therefore closely tied** to both infrastructure renewal and the County's broader development pattern



Saltwater Intrusion and Source Water Resilience

- **WASD and USGS** maintain an advanced saltfront monitoring network in the Biscayne Aquifer
- **Saltwater intrusion** continues to migrate inland, creating ongoing pressure on freshwater resources
- **The inland extent map** was last updated in 2022
- **WASD is continuing installation** of additional monitoring wells to improve tracking and planning accuracy



Alternative Water Supply and Long-Range Planning Tools

- **C-51 Reservoir:** additional regional supply, with 15 mgd from stormwater otherwise discharged to tide
- **Aquifer Storage and Recovery:** cycle testing underway, with 5 mgd stored for use during the dry season
- **Hydrogeologic modeling:** updated groundwater model can simulate future groundwater conditions, flood potential, and saltwater intrusion through 2070

Key Takeaways

- **Water and sewer infrastructure is essential** to support future growth.
- **Utility planning must remain closely aligned** with land use and concurrency.
- **Continued investment is needed** to maintain capacity, reliability, and service.
- **Conservation, alternative water supply, and resilience planning** will be increasingly important.
- **Septic reduction and water resource protection** remain long - term priorities.
- **Coordinated planning will help ensure** growth is supportable, sustainable, and resilient.