

Evaluation and Appraisal Report Task Force

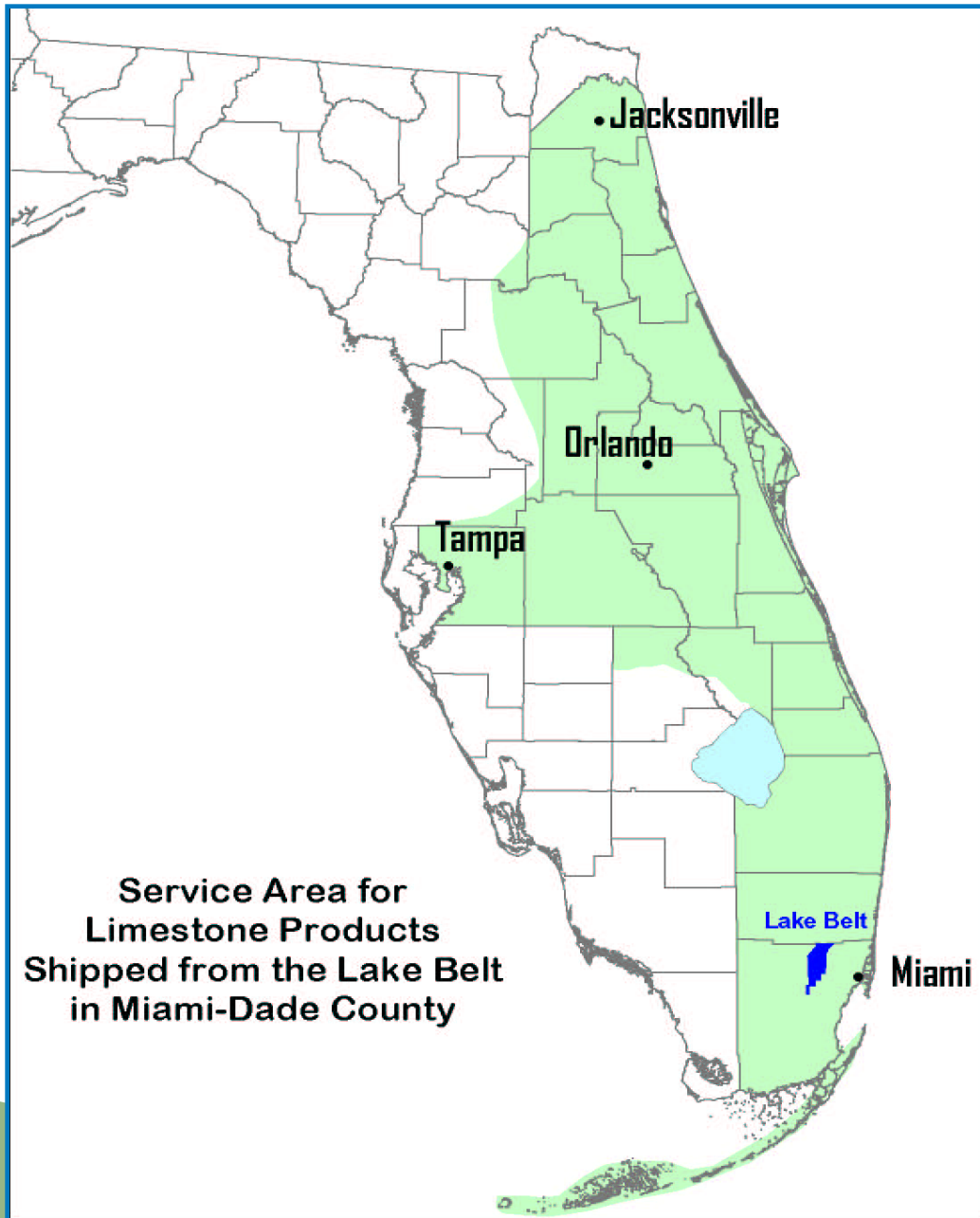
January 8, 2026

Miami-Dade County Lake Belt

Kimberly Brown, AICP
Chief, Long Range and Neighborhood Planning

This presentation was prepared in coordination with the
Florida Department of Environmental Protection
Office of Mining and Mitigation

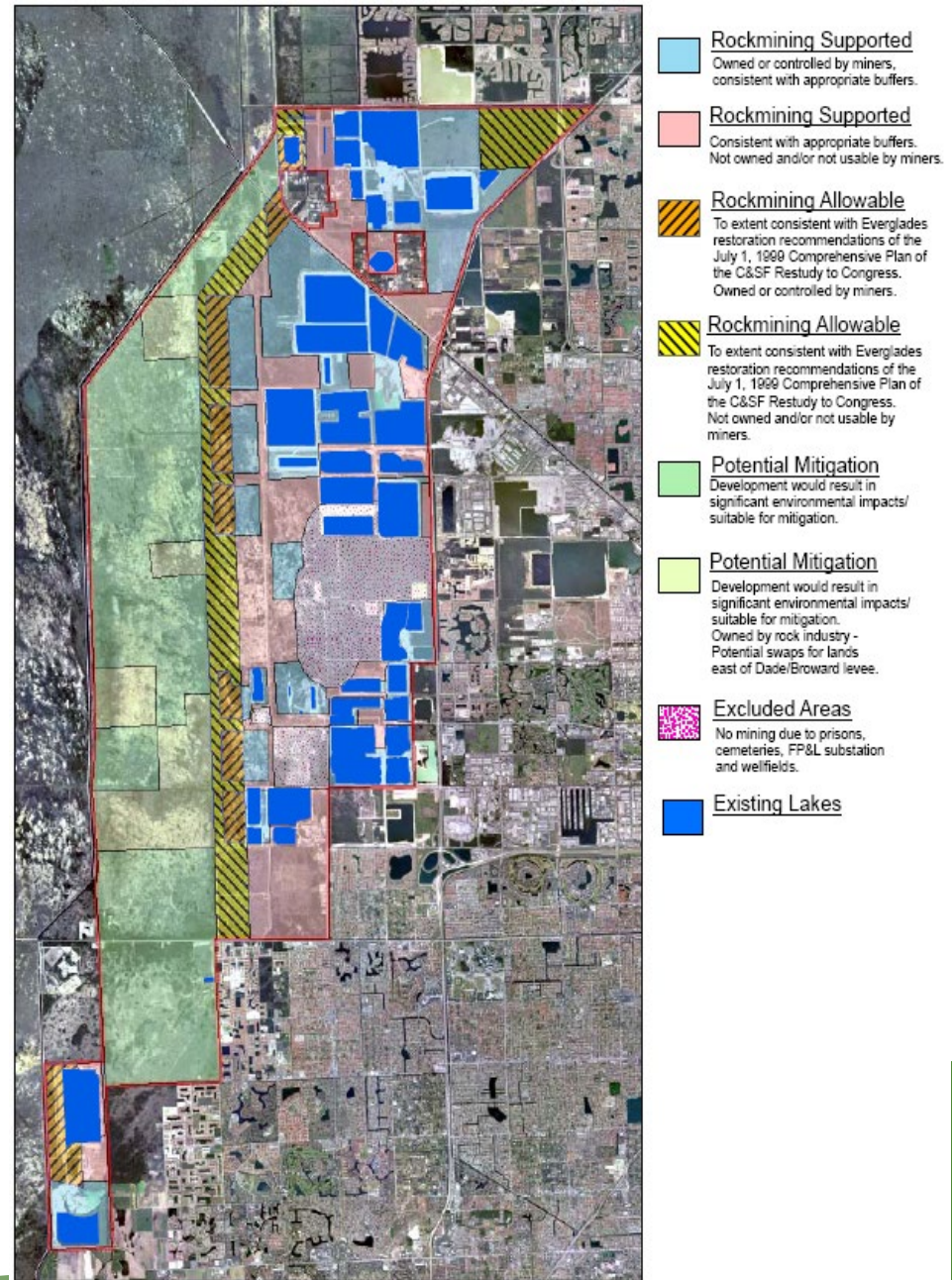




“...Florida’s highest quality limestone, the rock that makes the best roads and the best concrete only comes from the Lake Belt Region.” – FDOT Strategic Resources Study (2009)

The rock mined from the Lake Belt supplies one-half of the limestone used in Florida each year.

- The Lake Belt Area encompasses 77.5 square miles of environmentally sensitive land.
- In 1992, the Florida Legislature created the Miami-Dade County Lake Belt Plan Implementation Committee and directed it to develop a plan that protects the environment and water supply for Miami-Dade County and the Everglades, while promoting the social and economic welfare of the community and maximizing the efficient recovery of limestone.



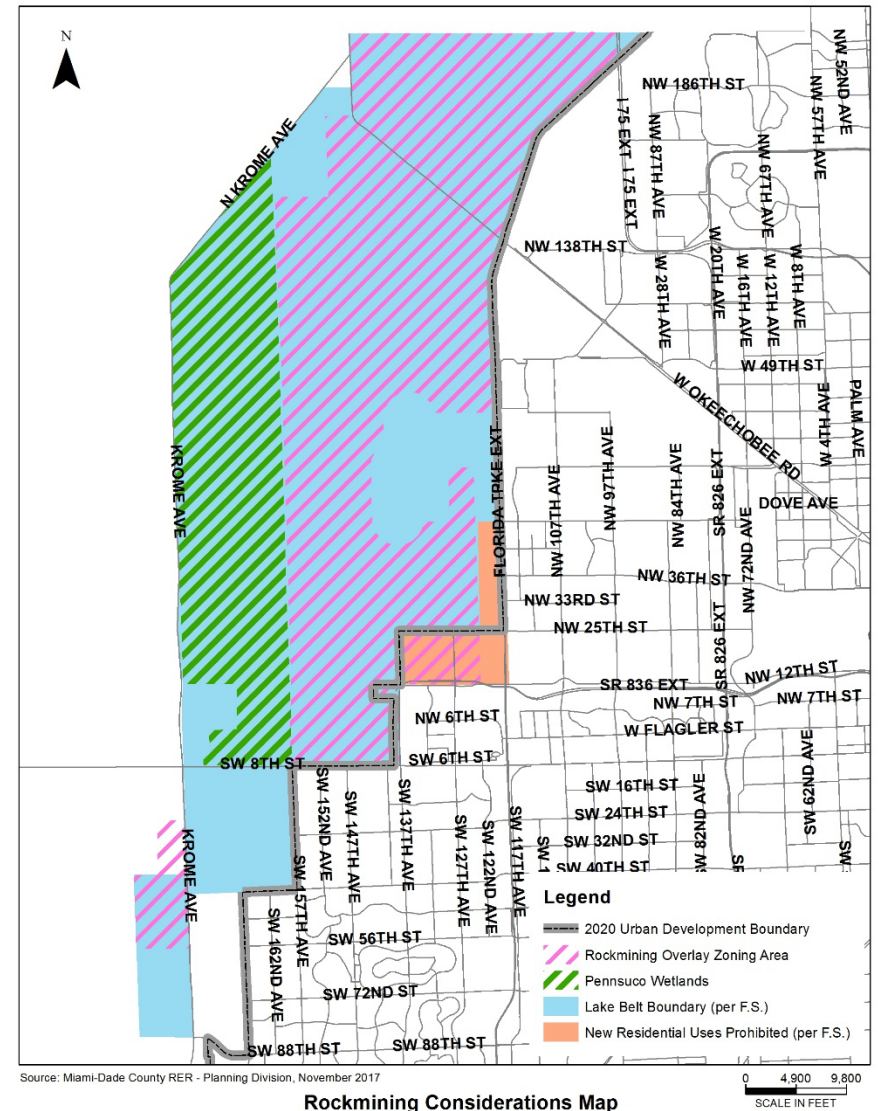
Northwest Dade County Freshwater Lake Belt Plan

State Law Requirements

- Section 373.4149(4), F.S. ...When amending local comprehensive plans, ..., Miami-Dade County shall strongly consider limestone mining activities and ancillary operations, such as lake excavation, including use of explosives, rock processing, cement, concrete and asphalt products manufacturing, and ancillary activities, within the (Lake Belt Area)...
- ...amendments to local comprehensive plans concerning properties that are located within one mile of the Lake Belt Area shall be compatible with limestone mining activities.
- No...amendments to local comprehensive plans for any residential purpose may be approved in sections 35 and 36 and the east one-half of sections 24 and 25, Township 53 South, Range 39 East until such time as there is no active mining within 2 miles of the property.

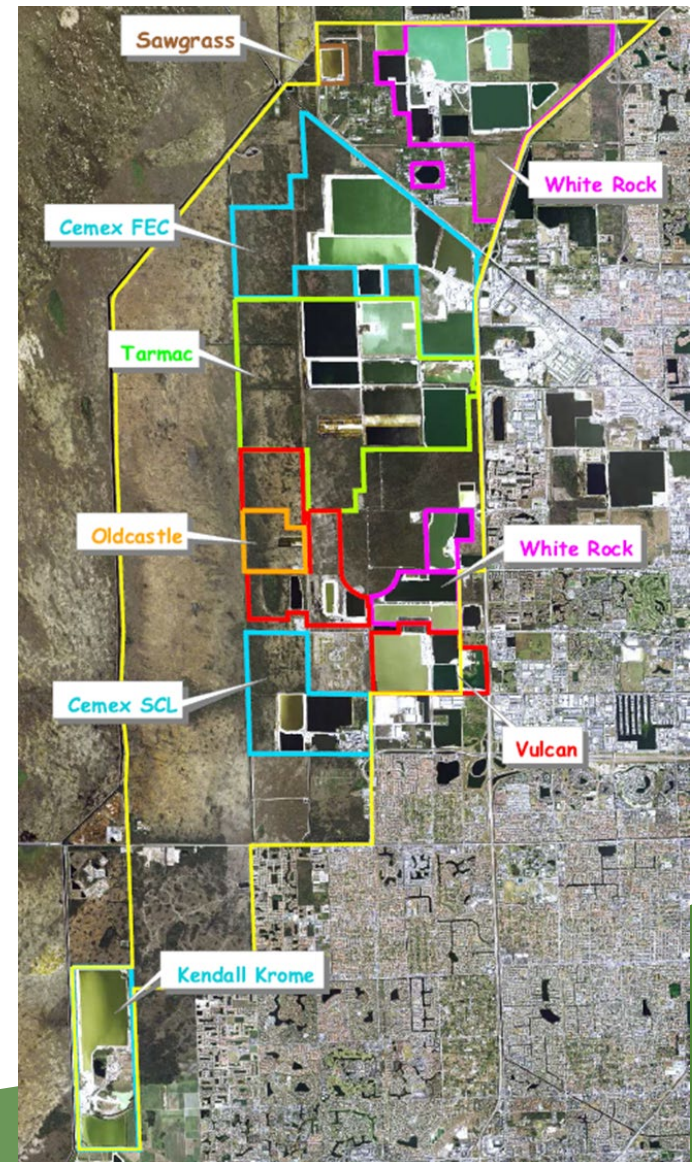
Rockmining Area

- Lake Belt Area, defined by State law – amendments within one mile must be compatible with rockmining.
- Rockmining Overlay Zoning Area (ROZA), defined by Article XLI, MDC Code - mining generally permitted w/o hearing
- Residential Restricted Area – defined by State law
- Pennsuco Wetlands – mitigation area
- Rockmining permitted in other areas within Open Land Subareas 2, 3 and 5 by public hearing.



CDMP Policies

- Policy CON-3E. The area west of the Turnpike, east of the Dade-Broward Levee, north of NW 12th Street and south of Okeechobee Road shall be reserved for limestone mining and approved ancillary uses... and the entire area west of the Turnpike, north of NW 25th Street and south of Okeechobee Road shall remain unurbanized.
- Policy CON-6A. Areas of highest suitability for mineral extraction in Miami-Dade County shall be reserved for that use and shall be protected from encroachment by incompatible uses.



Mitigation

- Section 373.41492, F.S. The per-ton mitigation fee assessed on limestone sold from the Miami-Dade County Lake Belt Area (and nearby areas) shall be used for acquiring environmentally sensitive lands and for restoration, monitoring, maintenance, and other environmental purposes.
- Mitigation to Date (2023 Annual Report)
 - 3,101 acres in the Pennsuco wetlands (restoration and long-term management of an additional 4,924 acres adjacent to Pennsuco);
 - 100 Pennsuco-equivalent acres in the Southern Glades area,
 - 7,026 Pennsuco-equivalent acres in the Abiaki Prairie project (Hendry County);
 - 3,009 Pennsuco-equivalent acres for the L-31N seepage project.
- Approx. \$139M in mitigation fee collections (1999 – 2022)



Miami-Dade County Department of
Regulatory and Economic Resources,
Planning Division