



Threatened and Endangered Species

RER Building and Environmental Permitting Division

Lazaro Quintino, Manager, Tree and Forest Resources Section

Martha Lastre, Senior Manager

Conservation, Aquifer Recharge and Drainage Element of the CDMP of Miami-Dade County

- ▶ As stated in the CDMP, “it is the intent of this Element to identify, conserve, appropriately use, protect and restore as necessary the biological, geological and hydrological resources of Miami-Dade County.”
- ▶ Objectives CON-7, CON-8, and CON-9 contain policies and objectives that protect habitats that are utilized by threatened and endangered flora and fauna.
- ▶ As per Chapter 24 of the Code of Miami-Dade County, proposed projects that require regulatory reviews and permits are evaluated for conformance with the CDMP.

Objective CON- 7

Miami-Dade County shall protect and preserve the biological and hydrological functions of Wetlands of Regional Significance that may be contained within the areas depicted on Figure 14 in the Land Use Element.



Policy CON-7A -

The degradation or destruction of Wetlands of Regional Significance that may be contained within the areas depicted on Figure 14 in the Land Use Element shall be limited to activities that 1) are necessary to prevent or eliminate a threat to public health, safety or welfare; or 2) are water dependent and no other reasonable alternative exists; or, 3) clearly in the public interest and no other reasonable alternative exists; or 4) are carried out in accordance with an approved basin management plan; or 5) are in areas that have been highly disturbed or degraded and where restoration of a wetland with an equal or greater value in accordance with federal, State and local regulations is feasible. Habitats critical to endangered or threatened species shall not be degraded or destroyed.

Objective CON-8

Upland forests included on Miami-Dade County's Natural Forest Inventory shall be maintained and protected.

- ▶ Regulations for conformance with Policies CON-8A, 8C, 8E, 8G, 8H, and 8I are within Section 24-49 of the Tree Protection and Preservation ordinance, which focuses on the preservation and protection of Natural Forest Communities and specimen size trees. Prohibited and invasive nuisance species are also regulated under Section 24-49.9.
- ▶ Policy CON-8D provides for the preservation and protection of hammocks and pinelands, their understory and associated rare, threatened and endangered species.
- ▶ Policy CON-8J focuses on the protection of federal and State listed animal and plant species through Miami-Dade County's land acquisition and regulatory processes.



Objective CON-9

Freshwater fish, wildlife and plants shall be conserved and used in an environmentally sound manner and undeveloped habitat critical to federal, state or County designated endangered, threatened, or rare species or species of special concern shall be preserved.

Policies CON-9A, 9B, 9C, 9D, 9E, 9F provide direction and guidance for allowable development in areas that may contain habitat utilized by threatened or endangered species.

Appendix A of the Conservation Element contains a list of Federal, State, and County Endangered, Threatened, Rare, and Special Concern Flora in Miami-Dade County.

Appendix B of the Conservation Element contains a list of Federal, State, and County Endangered, Threatened, Rare, and Special Concern Fauna in Miami-Dade County.

CON-9 Policies

- ▶ CON-9A. All activities that adversely affect habitat that is critical to federal or State designated, endangered or threatened species shall be prohibited unless such activity(ies) are a public necessity and there are no possible alternative sites where the activity(ies) can occur.
- ▶ CON-9B. All nesting, roosting and feeding habitats used by federal or State designated endangered or threatened species, shall be protected and buffered from surrounding development or activities and further degradation or destruction of such habitat shall not be authorized.
- ▶ CON-9C. Rookeries and nesting sites used by federal or State designated endangered or threatened species shall not be moved or destroyed.
- ▶ CON-9D. The County should work with the US Fish and Wildlife Service, the Florida Fish and Wildlife Conservation Commission and other appropriate entities to describe and map wildlife populations, and by 2020, to determine the wildlife habitat values for all remaining freshwater wetlands and environmentally sensitive natural forest communities.
- ▶ CON-9E. Conservation of upland wildlife habitats shall be taken into consideration during development evaluation and permitting processes.
- ▶ CON-9F. The County's planning for the future development of open space and wetland mitigation areas shall include the protection, conservation and/or restoration of wildlife habitats.

Evaluation Factors

Is the proposed project located within designated critical habitat or designation consultation area for threatened and endangered species?

Is the proposed project located within an area that exhibits the same or similar natural conditions as a designated critical habitat or consultation area for threatened and endangered species?

Does the proposed project area contain characteristics or conditions that may support utilization of threatened or endangered species?

Requirements for Evaluation

Biological assessments of proposed project area that include description of habitat types and wildlife utilization.

Wildlife utilization report and surveys using state or federal guidelines for conducting surveys of threatened or endangered species.

Evaluation Factor: Consultation Areas and Florida Bonneted Bat

Source: U.S. Fish and
Wildlife Service Florida
Bonneted Bat Consultation
Guidelines

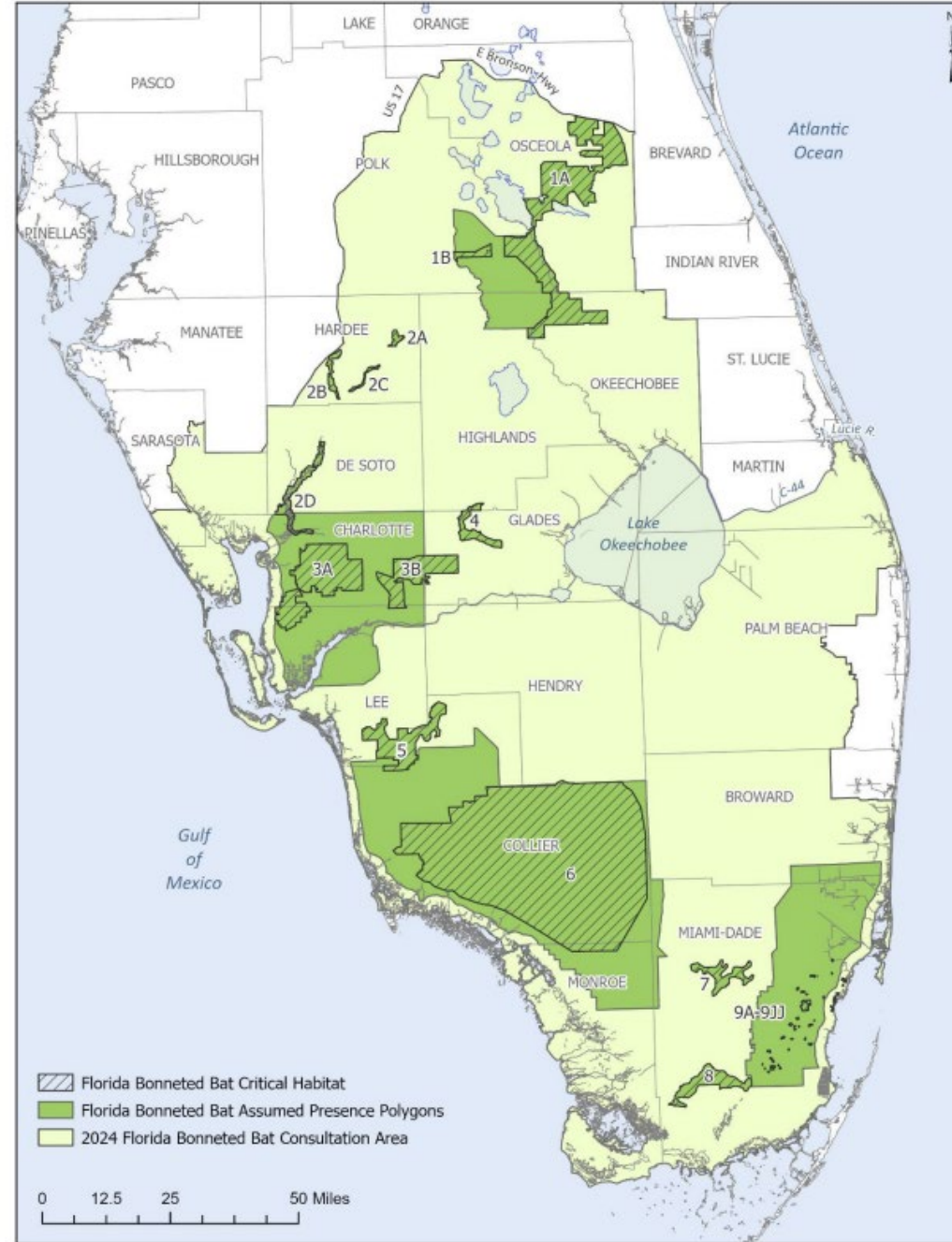


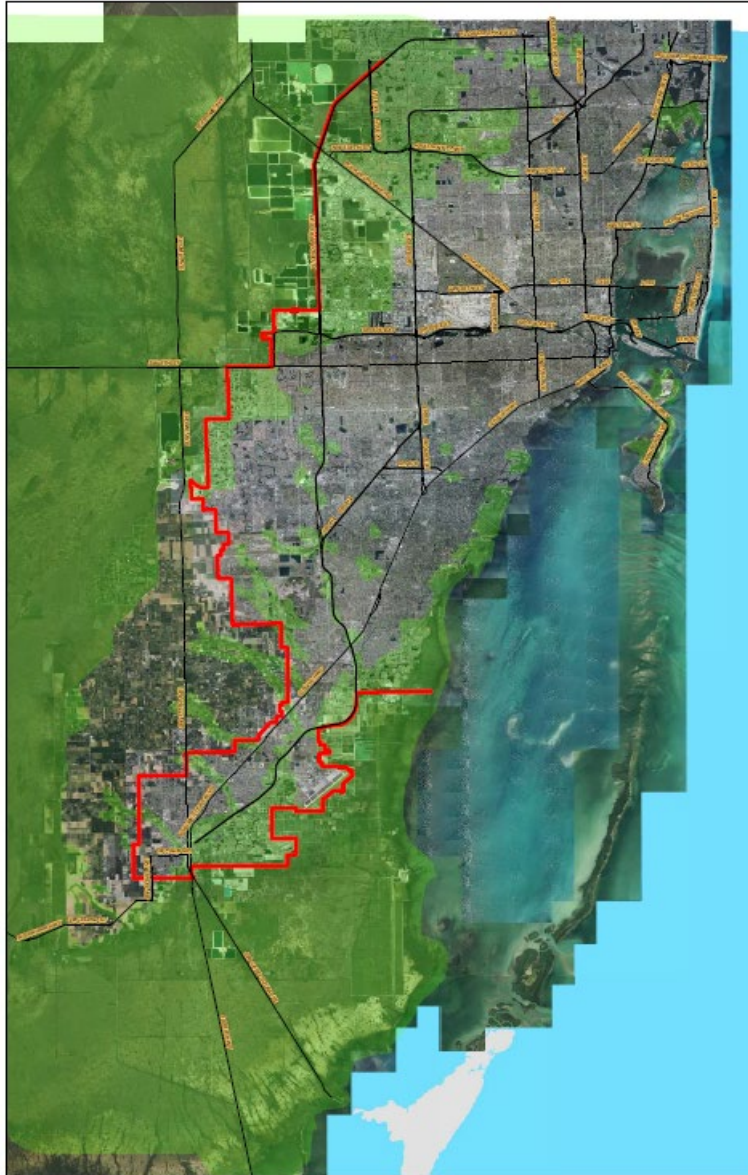
Figure 1. Florida Bonneted Bat Consultation Area, Critical Habitat Units, and Assumed Presence Polygons.

Evaluation Factor: Essential Manatee Habitat and Manatee Protection



- ▶ Section 24-48.3(1)(e) requires that applications for coastal construction are reviewed for conformance with the MDC Manatee Protection Plan (MPP). The MPP can be viewed at our website: <https://www.miamidade.gov/global/environment/ecosystems/manatees.page>

— Urban Development Boundary
— Wetlands Areas of Concern



Evaluation Factor: Wetland Areas of Concern

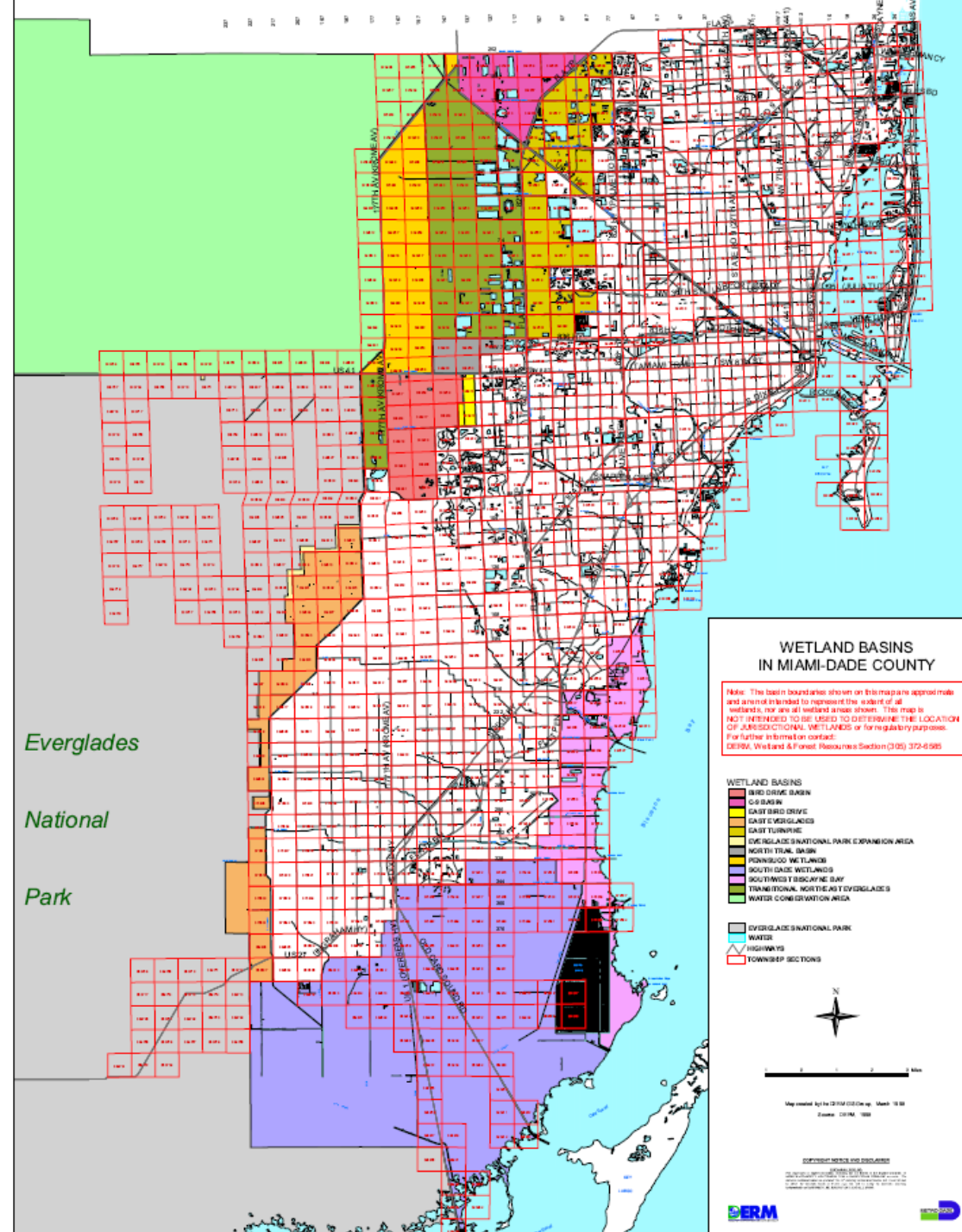
SCALE: 1 inch = 9,504 feet



The boundaries shown on the Wetland areas of concern layer area approximate and are not intended to represent the extent of all wetlands, nor are all wetland areas shown. This map is NOT INTENDED TO BE USED TO DETERMINE THE LOCATION OF JURISDICTIONAL WETLANDS or for regulatory purposes. For further information contact DERM, Wetlands Resources Section (305) 372-6585



Wetland Basins of Miami-Dade County



Example 1: Policy CON-8D/8J

- ▶ Yellow outline is the footprint of a property that was primarily in agricultural use and was being rezoned for residential use.
- ▶ Our early review of the property included an aerial review that identified the aerial signature of a remnant pine rockland plant community.
- ▶ An on-site inspection confirmed the presence of pine rockland habitat and 10 species of state listed threatened plants throughout the site. Comments were made based on our findings.



Policy CON-8D/8J

- ▶ Importance of identifying the existing resources as early as possible in the development process.
- ▶ Remnant upland habitat such as globally imperiled pine rocklands are extremely scarce.
- ▶ The amount of habitat that can be preserved is dependent on the size of property being developed, acreage/square footage of the habitat/resources, type of development/density, location of habitat/resources within property, and quality of habitat.
- ▶ Importance of these remnant habitats that can support T & E species regardless of size.



Example 2: Policy CON-9A/9B Wetland Preserve - Doral Glades



3.6-acre wetland preserve of wading bird foraging habitat. Species documented to have utilized the area are wood storks (E, Federal) and little blue heron (SSC, State).

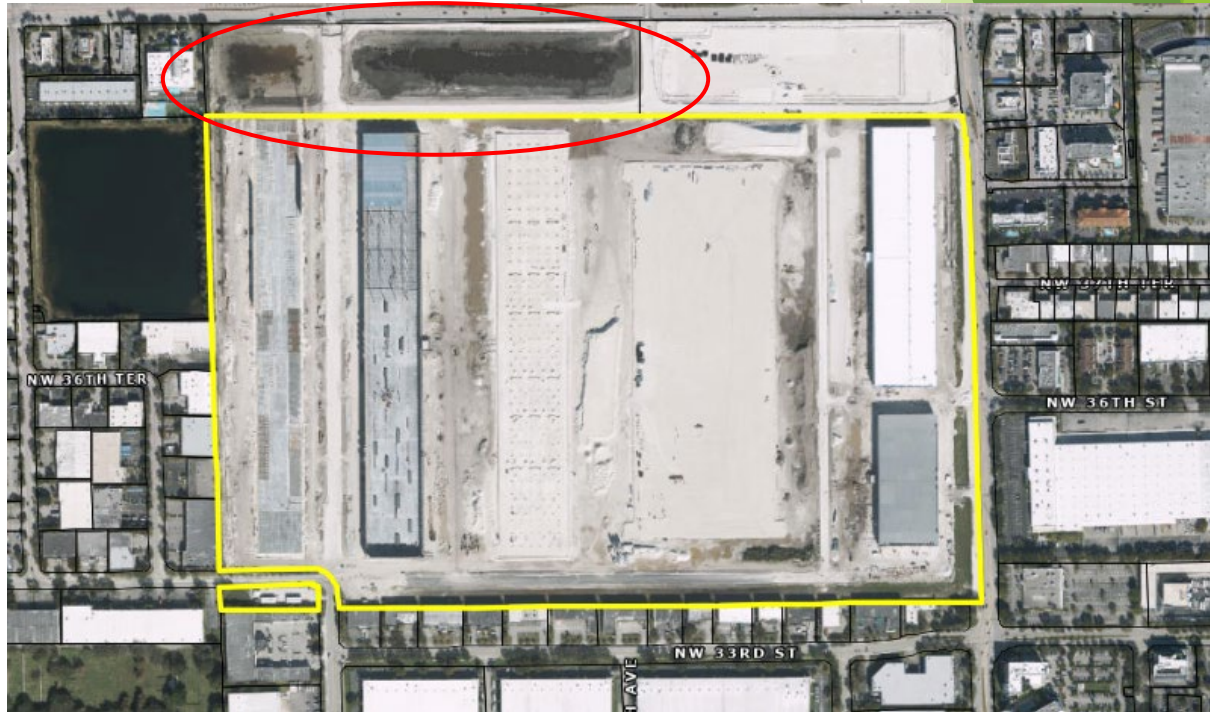
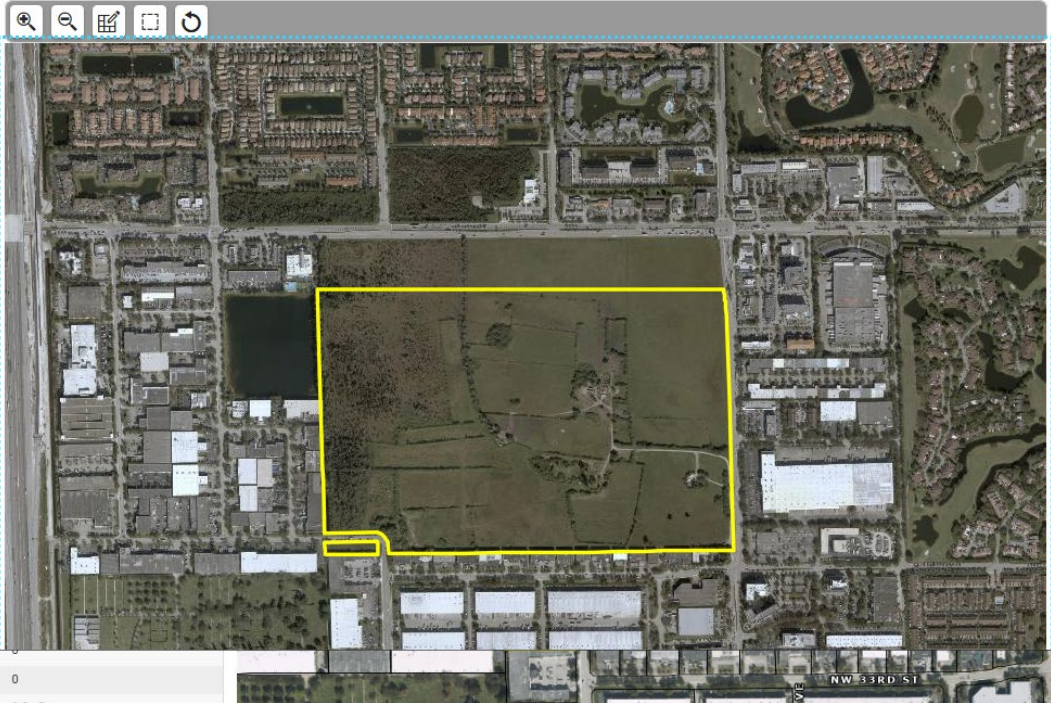


Example 3: Policy CON-9A/9B Wetland Preservation and the Florida Bonneted Bat - Prologis Doral CLIV-20210017



PROPERTY APPRAISER OF MIAMI-DADE COUNTY

Aerial Year: 2023
Folio: 3530300000025
Address: 3600 NW 112 AVE, Doral, FL 33178-0000



Source: Zoomiami.org

Example 3: Policies CON-9A/9B Wetland Preservation and the Florida Bonneted Bat - Prologis Doral

- ▶ As depicted in the map above, all of MDC is within the assumed presence polygon for the FBB.
- ▶ All proposed projects are evaluated for habitat that may be utilized by FBB. Surveys may be needed to detect FBB utilization.
- ▶ The level of utilization determines which best management practices (BMP) per state and federal guidelines to implement into development plans.
- ▶ To meet CDMP and MDC Code requirements for avoidance and minimization, 10.25 acres of wetlands on site were preserved and the Class IV permit CLIV-20210117 required BMPs for the FBB including roost surveys to be conducted within 30 days of construction, restricting the use of insecticides, planting of native vegetation, installation of low lumen downward facing lights, and architectural designs to discourage bat roosting.



Source: Zoomiami.org

A Few Things to Note....

- ▶ It is the role of RER and DERM to keep track of changes to the status of listed species and critical habitat. Any updates to the Conservation Element of the CDMP would include changes to the list of federal, state, and county protected species as there are many updates to listings and critical habitat since the last EAR process.
- ▶ The Environmentally Endangered Lands (EEL) Program is Miami-Dade County's foundational tool for protecting and conserving locally, state, and federally listed endangered and threatened species. Its primary job is to secure, restore, and maintain the rare and critical habitats these species depend on