

# Regional Restoration Policy

James Duncan

Chief, Urban Forest and Tree Division

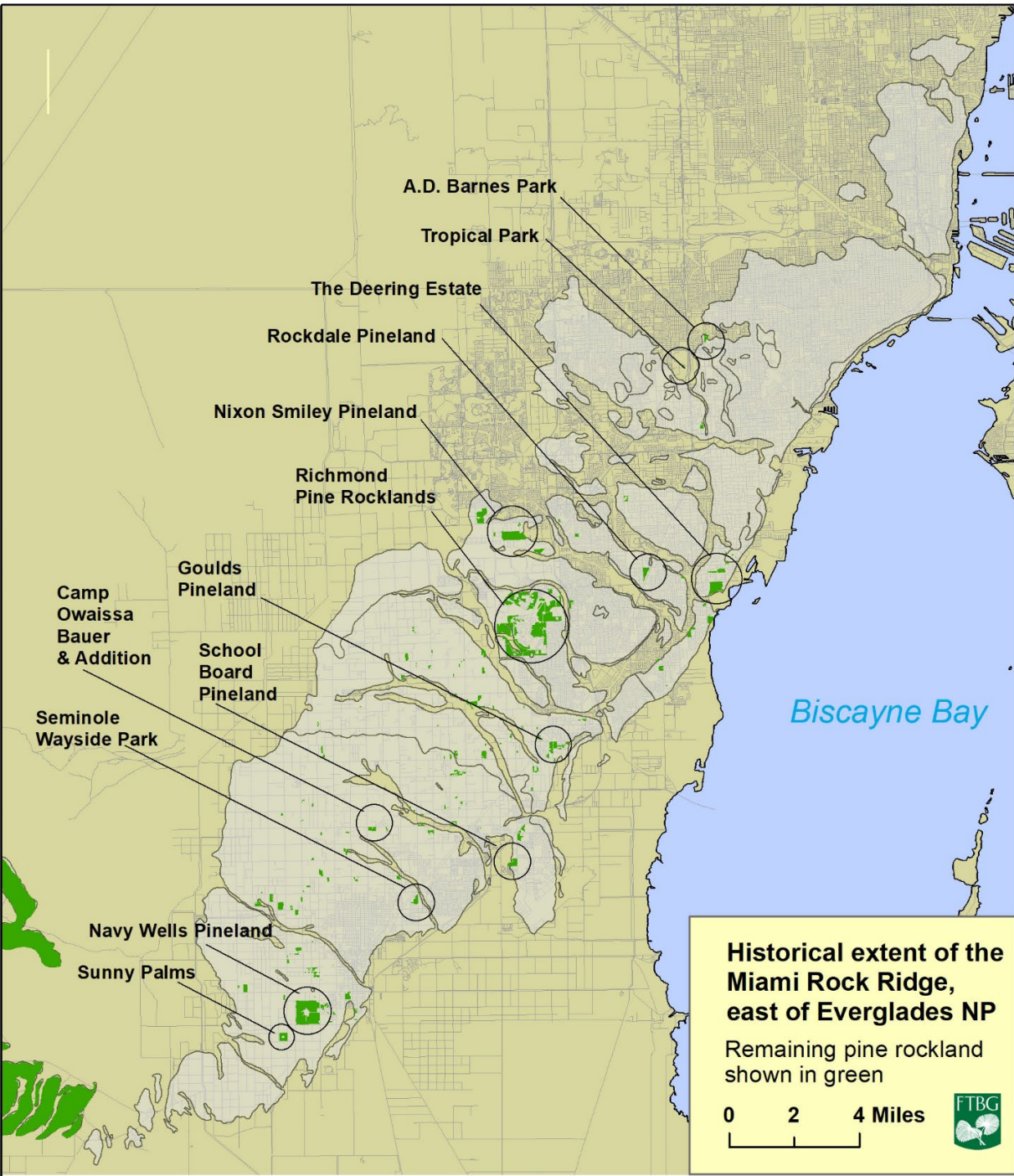
Dept of Environmental Resources  
Management (DERM)





## What is and was Miami Dade's Natural Environment?

Pine rockland, Rockland Hammock, Coastal and Freshwater Wetlands, Tree islands, Sloughs, Coastal strand, and others to name a few

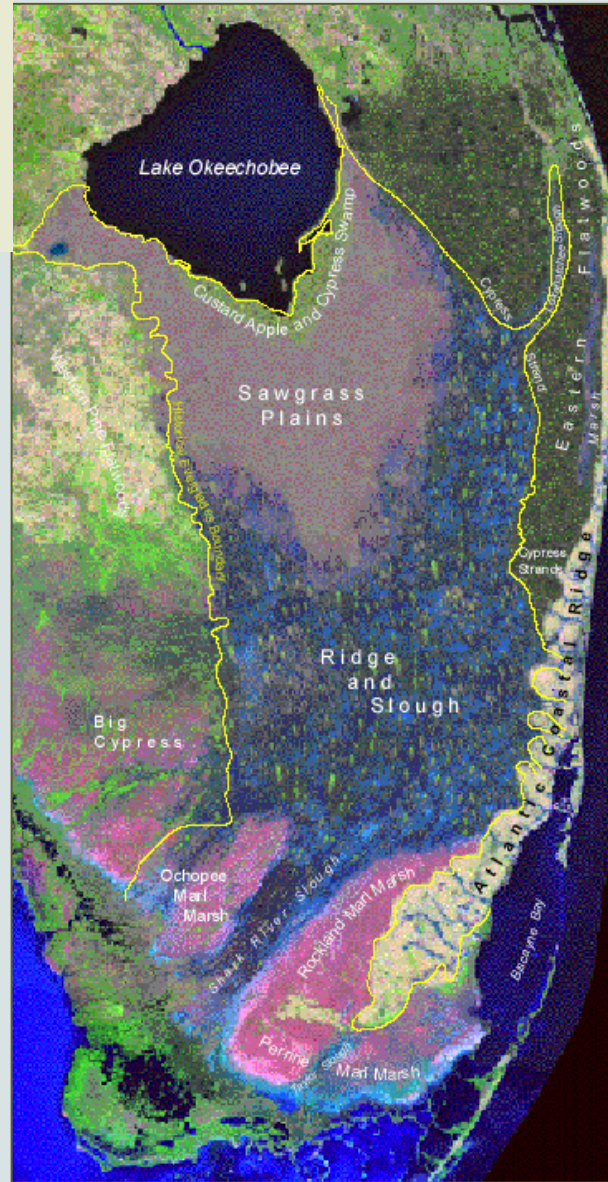


# Biscayne Bay is the Everglades

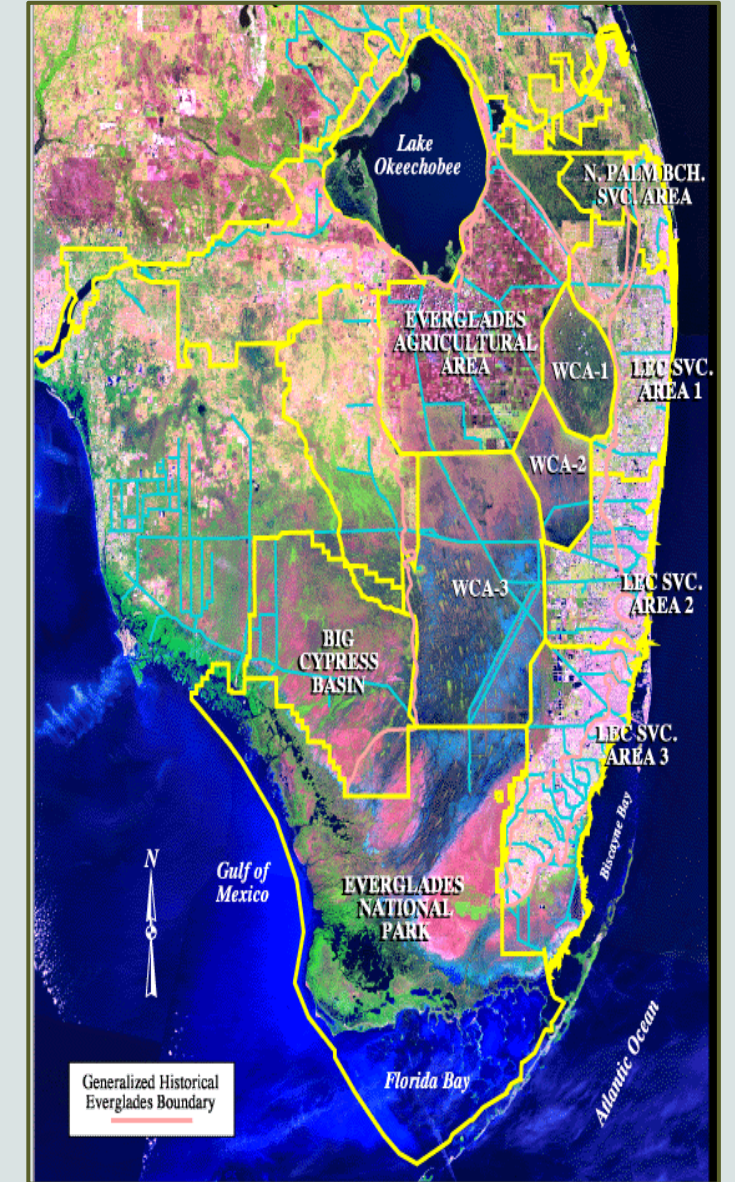
Biscayne Bay is part of the Kissimmee-Okeechobee-Everglades watershed

“Watershed is an area of land that drains to a common endpoint.” (UF-IFAS)

- Land of the Miccosukee, Seminole, and Tequesta People
- Kissimmee-Okeechobee-Everglades watershed originally flowed ~ 18,000 square miles
- Biscayne Bay was formed between 5,000 – 2,400 years ago
- Diverse flora and fauna
- Historically a nutrient poor (oligotrophic) system
- Provided abundant water supply, flowing water to the coast



Estimated Pre-drainage System Landscape (c.1850)



Current System Landscape (1995)

Credit: Pamela Sweeney

# What Policies are considered today?



LU-3J. Miami-Dade County continues to support the Comprehensive Everglades Restoration Plan (CERP), and related regional and local habitat restoration and preservation initiatives through its development review processes and long range land planning initiatives.

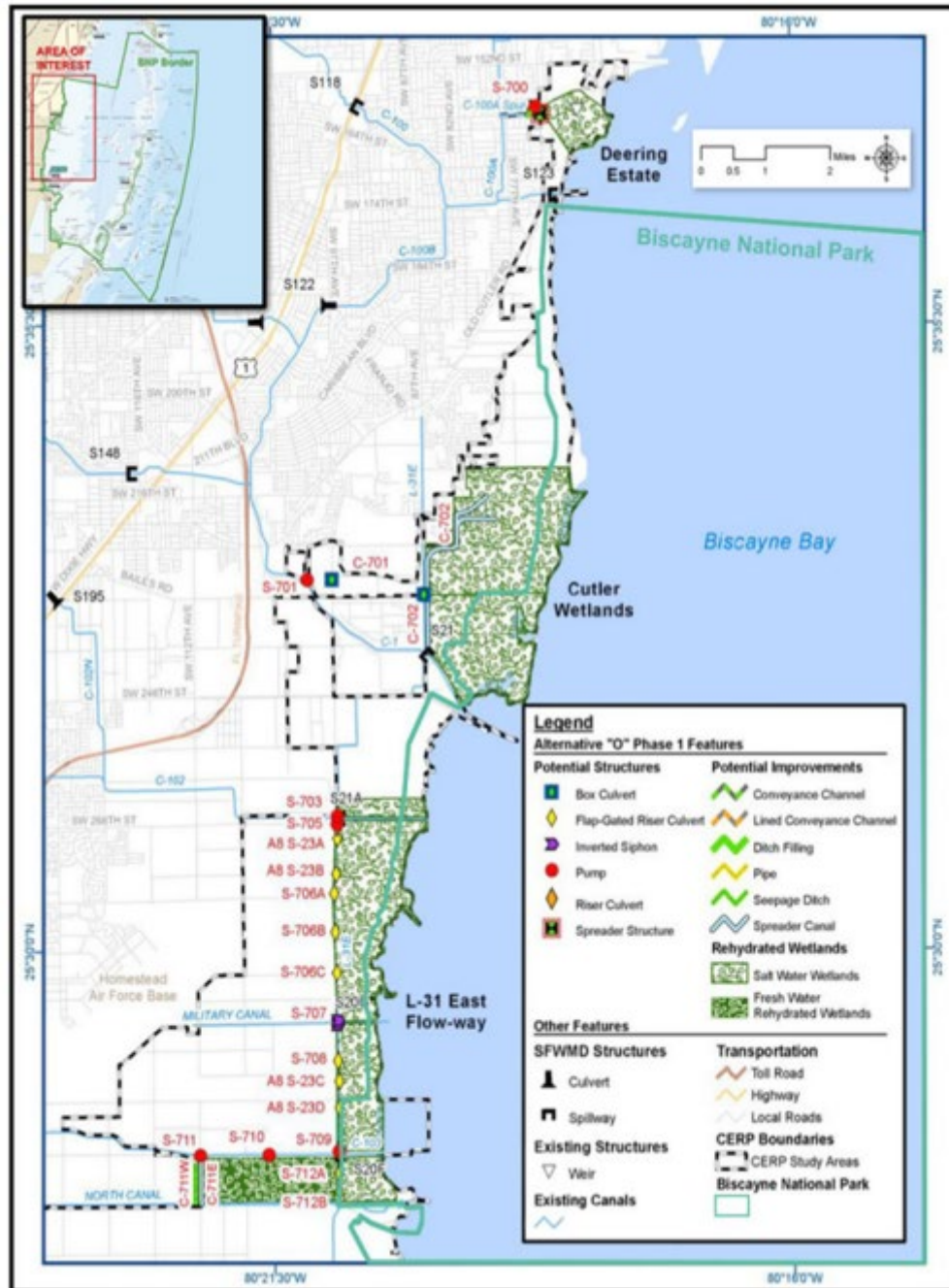
LU-8G (c) for shall not be considered in the UDB:

Comprehensive Everglades Restoration Plan project footprints delineated in Tentatively Selected Plans and/or Project Implementation Reports;

LU-8G (3) should be avoided for UDB: Comprehensive Everglades Restoration Plan projects identified in the 1999 Final Integrated Feasibility Report and Programmatic Environmental Impact Statement, as may be modified formally or informally by the United States Army Corps of Engineers or the South Florida Water Management District or that have been approved by the South Florida Water Management District Governing Board

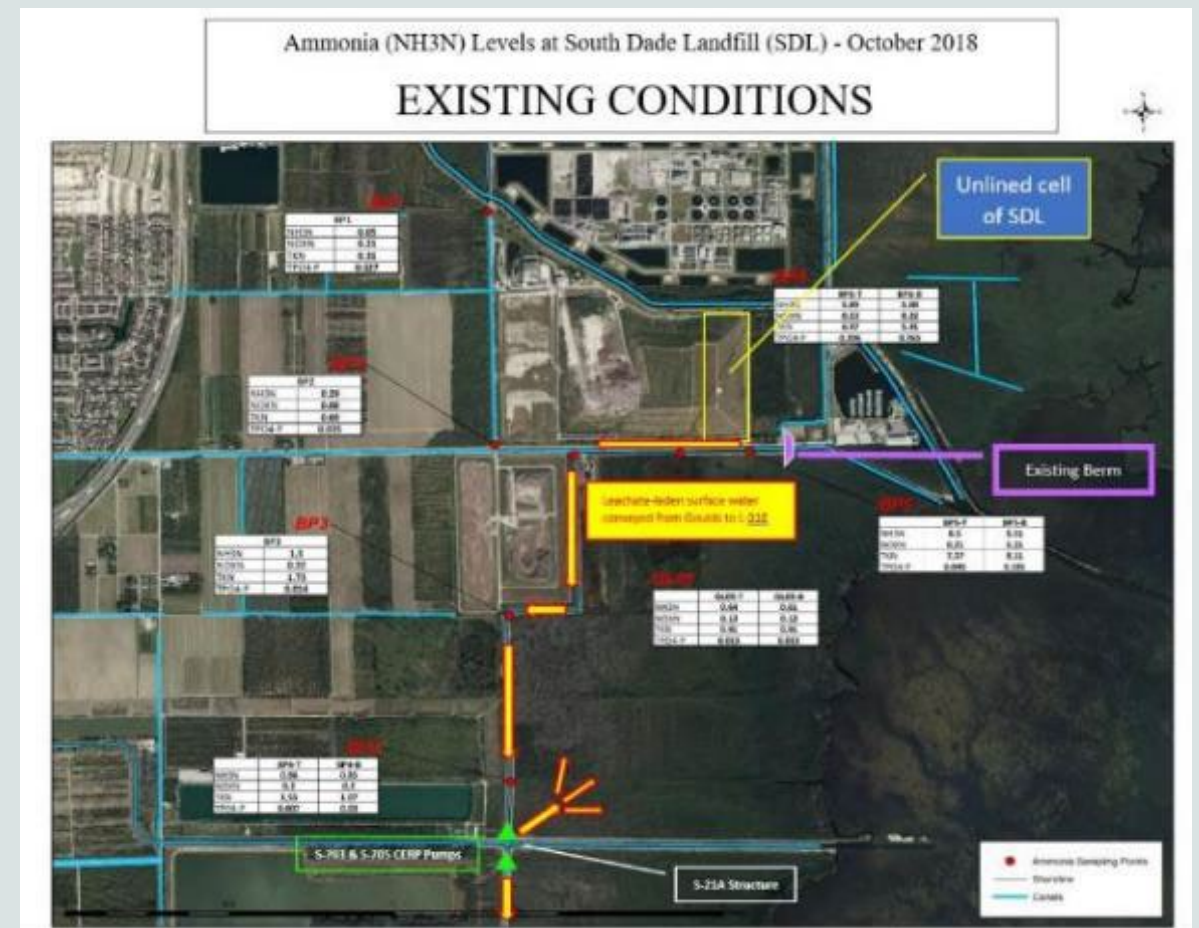
CON-7J. In evaluating applications that will result in alterations to wetlands, Miami-Dade County shall consider the applications' consistency with Comprehensive Everglades Restoration Program (CERP) objectives. Applications that are found to be inconsistent with CERP objectives may be denied.

# Project Goals and Status



- Goal of BBCW Phase 1:
  - Rehydrate coastal wetlands
  - Reduce damaging point-source freshwater discharge to Biscayne Bay and Biscayne National Park
  - WRDA 2024 increased construction costs for BBCW
  - Deering Estate, Cutler Wetlands, L-31 East flow-way
  - All major components are completed - Ribbon Cutting 12/9/25
- Goal of BBSEER
  - BBCW Phase 2 was intended to Implement remaining features
  - These projects are now incorporated into BBSEER
    - BBCW Phase 2, C-111 Spreader Canal Eastern Project, & remaining local CERP components and potential water sources Both projects are authorized under WRDA 2000 and will require new authorization
    - 6 major components
  - April 2025 - Meeting to present Tentatively Selected Plan (Alt32)
    - Design refinement and adaptive management
    - TSP to be signed by Chief of Engineers in June 2026
    - Congressional authorization through WRDA

# BBCW L-3 1 FLOW-WAY PROJECT + GOULDS CANAL HYDROLOGIC RESTORATION



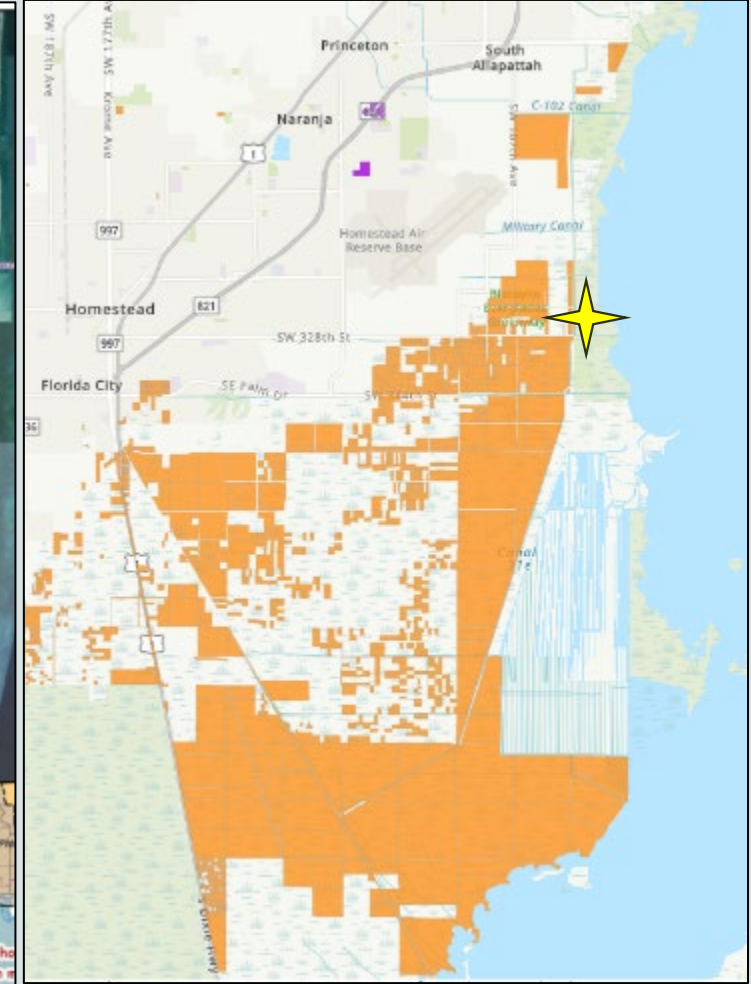
Credit: Pamela Sweeney

# Keys to Successful Everglades Restoration in Miami-Dade County

- Land Acquisition
- Avoid Additional Delays
  - *BBSEER now in WRDA 2028*
- Continued collaboration
  - *Fed/State*
  - *County/Local*
- Leverage directive to integrate various USACE projects
- County Policy (CDMP)
- Watershed Plan



BBSEER Study Area



EEL Lands – A and B Lists



L-31E Flow-way for reference

Credit: Pamela Sweeney

# What is the participation of Agencies and the County on Endangered Species Habitat?

- Sharing technical information for analysis and recovery, examples include:
  - *Sharing occurrence and extent of populations*
  - *Habitat extent and utilization*
  - *Best management practices*
  - *Technical assistance to cover take during restoration actions*
- County Staff also prepare reports and positions on listings that sometimes come from the mayor's office.

- **CON-9A. All activities that adversely affect habitat that is critical to federal or State designated, endangered or threatened species shall be prohibited unless such activity(ies) are a public necessity and there are no possible alternative sites where the activity(ies) can occur.**
- **What us the status of listings? What has changed?**

# Restoring Our Upland Forests: What policies guide us?

- CON-9D. The County should work with the US Fish and Wildlife Service, the Florida Fish and Wildlife Conservation Commission and other appropriate entities to describe and map wildlife populations, and by 2005, to determine the wildlife habitat values for all remaining freshwater wetlands and environmentally sensitive natural forest communities.
- CON-8F. Miami-Dade County shall continue to seek natural areas land management funds to conduct prescribed burns, and other appropriate techniques to establish the appropriate fire regime for natural areas, while minimizing deleterious off-target effects to native plant and animal species and negative impacts to the public health, safety and welfare. The County shall also seek funds to control and remove exotic plant species from public rights-of-way and other County-owned land outside of parks and natural areas.

**CON-8G. The Natural Forest Communities that are owned by the Miami-Dade County School District shall be preserved and maintained and used as natural outdoor laboratories. Tracts of land that are to be developed as future school sites should be landscaped with appropriate xeriscape and/or native plant material. Wherever feasible, upland or wetland revegetation projects should be incorporated into the school's landscape design, and teaching curriculum.**





# Challenges to Restoration of Impacted land to pine rockland

- Challenges of a Karst Rock formation- Sand vs Rock
- Fire in Urban Areas
- Complexities of allocating resources- What forest, where are the trees? What neighborhood?
- Extreme impacts- rock plowing for ag, regional drainage, decades (century?) of dumping.

A photograph of a pine forest with a central text overlay. The image shows several tall, slender pine trees against a clear blue sky. In the foreground, there are green, spiky plants. A semi-transparent grey box is centered over the image, containing the text "Questions?" in a black, serif font.

*“Questions?”*