



www.miamidade.gov/development

Welcome to the

SANITARY SEWER SYSTEM CAPACITY CERTIFICATION

PAST, PRESENT and FUTURE

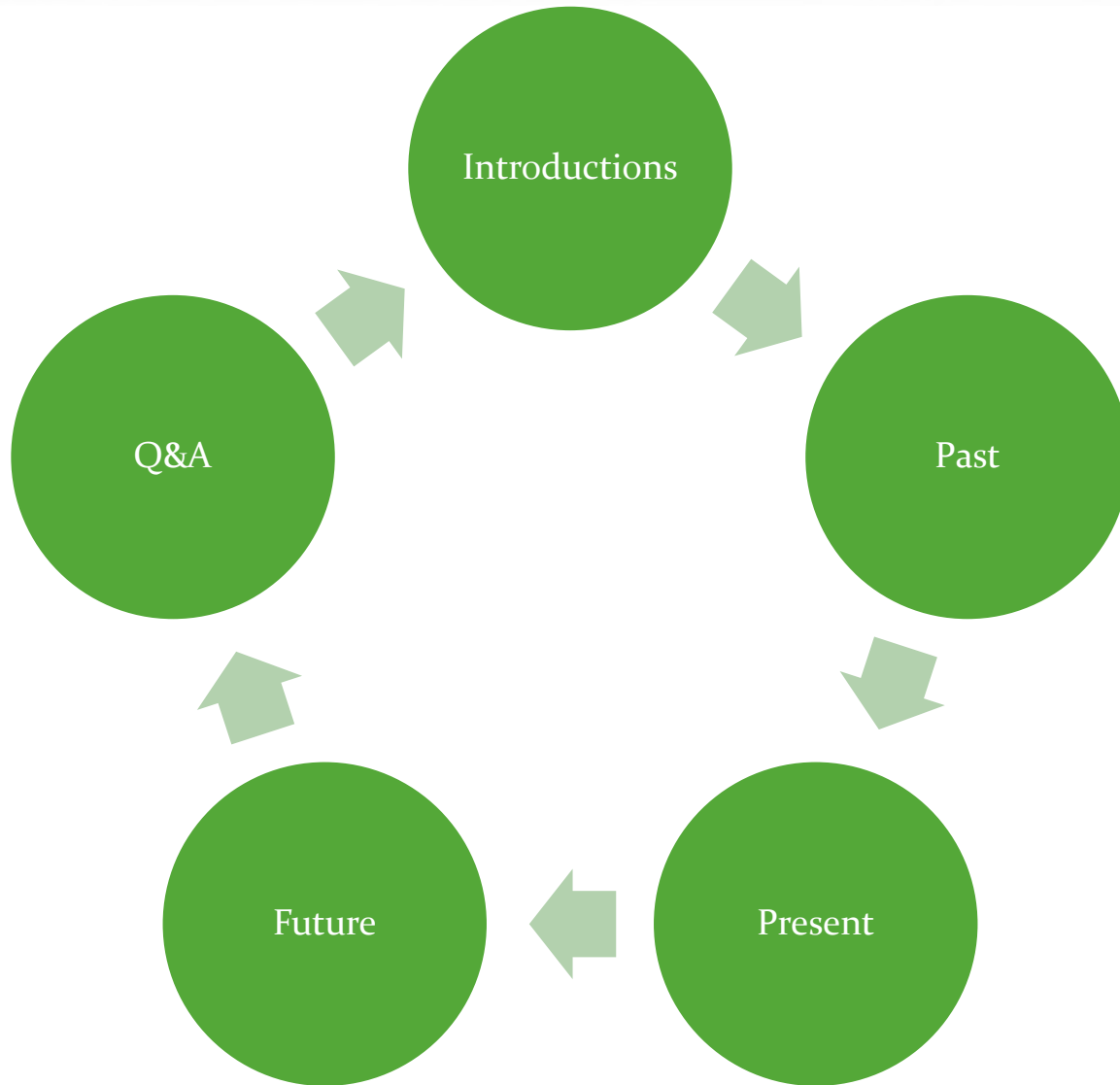


Presented by
Carlos L. Hernandez, PE, CFM, LEED AP, Chief,
hernac@miamidade.gov / **(786) 315-2800**



**Department of Regulatory and
Economic Resources**
www.miamidade.gov/development

Sanitary Sewer Capacity Certification: Past, Present & Future



Sanitary Sewer Capacity Certification: Past, Present & Future

Environmental Plan Review: *Prior Presentations*



2011 Workshop

- Provide an Overview of DERM
- Identify Key DERM Staff 
- Provide an Overview of the Development Approval Process
 - General / Core / Specialty
- Identify Key Design Criteria 
 - Why?
 - Reduce Reworks
 - Expedite Approval Process 
 - Outcome?
 - Increase Protection of Environment.
 - Deliver Projects to your clients faster. 

Getting it Right the First Time Workshop for City Officials

DERM Overtown Transit Village North
October 29th, 2008
701 NW 1 Court, 2nd Floor Training Room
1 – 5 pm

Reservations
(786) 315-2800

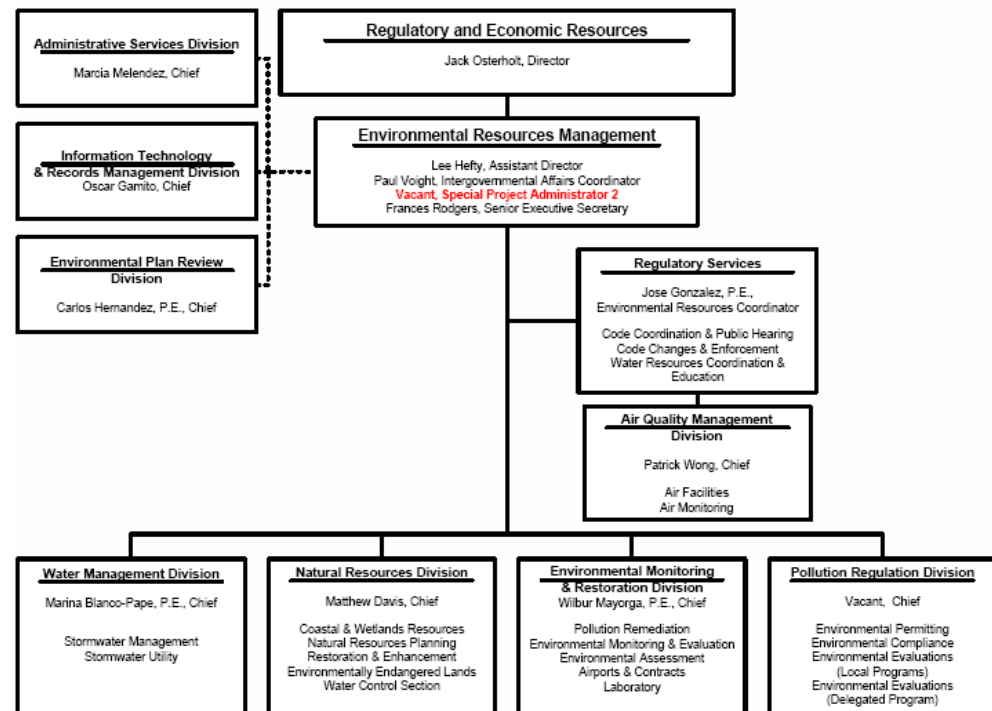
Sanitary Sewer Capacity Certification: Past, Present & Future

Environmental Plan Review: *Who's Who*

Carlos L. Hernandez, Division Director
hernac@miamidade.gov
786-315-2806

Frank Lezcano, Supervisor
Downtown, OTV
LezcaF@miamidade.gov

Christian Guerrero,
Supervisor
West Dade, PIC
GuerrCh@miamidade.gov



WASD: *Who's Who*

Sanitary Sewer Capacity Certification: Past, Present & Future

Environmental Plan Review: *Who's Who*

Section	Section Supervisor	Area of Review	Email	Phone
Division Chief	Carlos L. Hernandez, PE, CFM, CEHP, LEED AP	All	hernac@miamidade.gov	786-315-2806
Division Secretary	Gloria Taborda	NA	taborgl@miamidade.gov	786-315-2800
Plan Review-OTV	Frank Lezcano	Flow Studies, Building Permit and Certificate of Use	lezcaf@miamidade.gov	305-372-6502
Plan Review-OTV	Christina Fernandez	Flow Studies, Building Permit and Certificate of Use	FernaC@miamidade.gov	305-372-6498 305-416-1488 (MWF)
Plan Review-PIC	Cristian Guerrero, PE	Flow Studies, Building Permit and Certificate of Use	guerrch@miamidade.gov	786-315-2805
Plan Review-PIC	Silvia Roehner	Building Permit and Certificate of Use	abrahr@miamidade.gov	786-315-2811
Plan Review-PIC	Betty Hernandez	Building Permit and Certificate of Use	HernaB@miamidade.gov	786-315-2807
Specialty Engineering	Roberto Abrahante	Paving & Drainage, Flood, Asbestos, Industrial Waste/Materials/Pretreatment, Water/Sewer Extensions, AST/UST, Air Pollution Sources, Trees, Wetland/Coastal.	abrahr@miamidade.gov	786-315-2810

Sanitary Sewer Capacity Certification: Past, Present & Future

In the Beginning: SSOs

Arterial or Collector Street



Local (Residential) Street



- Protect Public Health,
- Protect Property Values,
- Promote Development, ...

Sanitary Sewer Capacity Certification: Past, Present & Future

Sanitary Sewer Overflows: *Causes*



FOG



Corrosion

RD I&I



Which is least likely to cause a SSO?

Contractor Damage



Development



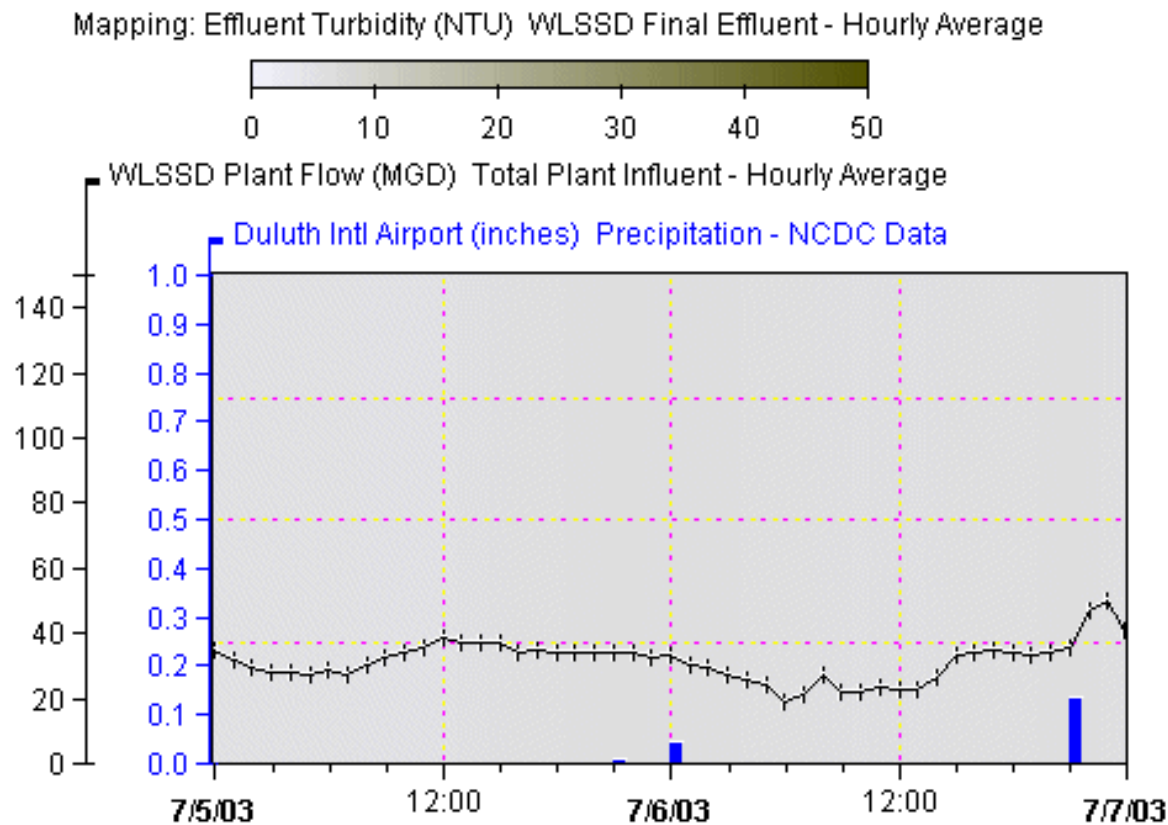
WHY?

Sanitary Sewer Capacity Certification

Sanitary Sewer Capacity Certification: Past, Present & Future

Sanitary Sewer Overflows: *Causes*

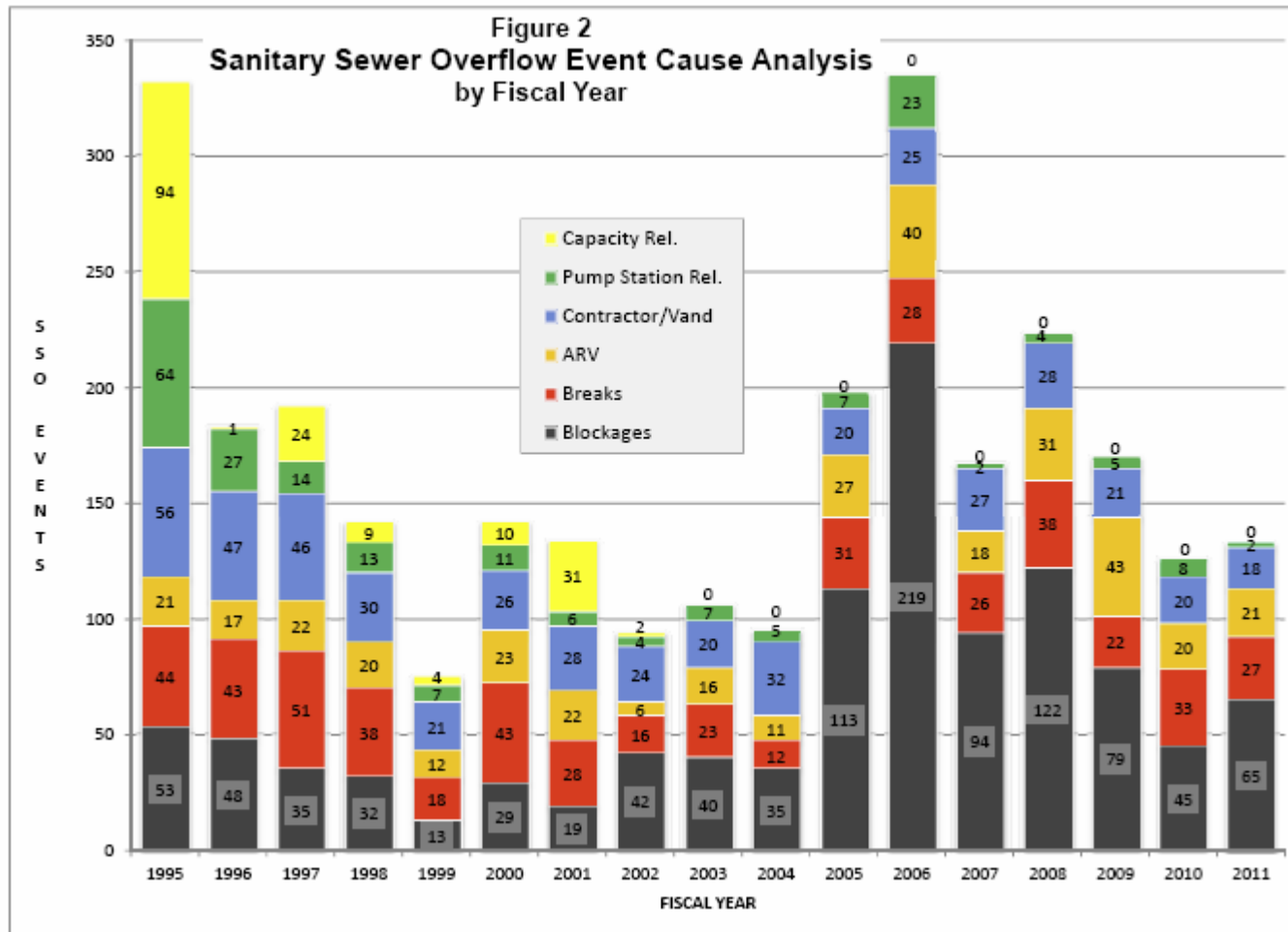
Duluth Precip. / WLSSD Flow



Each bar displays data accumulated during that 3 hour period

Sanitary Sewer Capacity Certification: Past, Present & Future

In the Beginning: SSOs

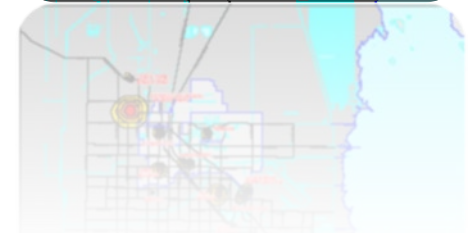
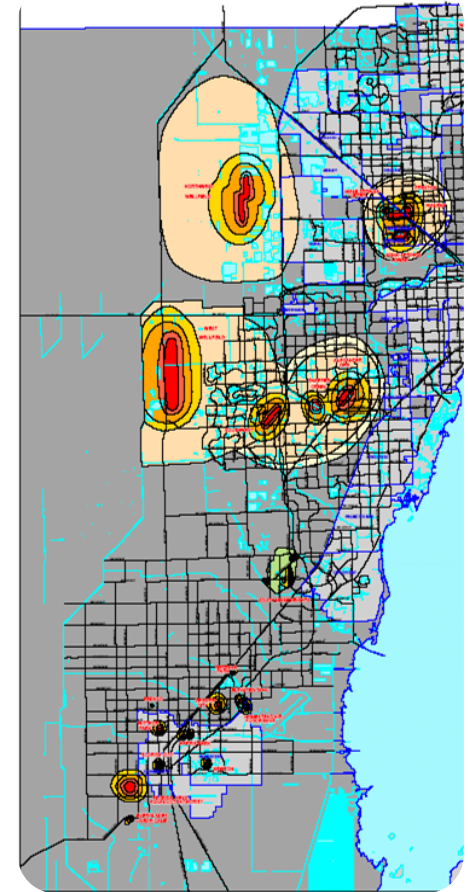
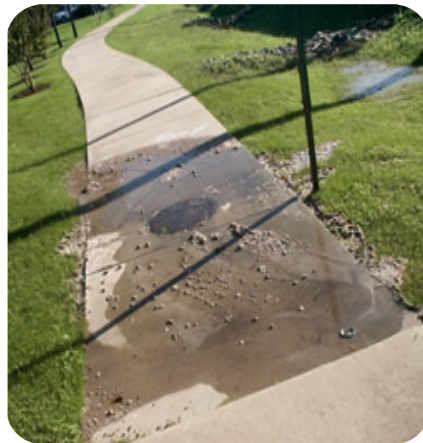


Sanitary Sewer Capacity Certification: Past, Present & Future

In the Beginning: SSOs



- Protect Public Health,
- Protect Property Values,
- Promote Development, ...



Sanitary Sewer Capacity Certification: Past, Present & Future

The Federal Consent Decree: *First & Second Partial*

UNITED STATES DISTRICT COURT
SOUTHERN DISTRICT OF FLORIDA

UNITED STATES OF AMERICA,)
Plaintiff,)
)
v.) CASE NO. 93-1109
) CIV-MORENO
METROPOLITAN DADE COUNTY, and)
MIAMI-DADE WATER AND)
SEWER AUTHORITY DEPARTMENT,)
Defendants,)
)
and)
STATE OF FLORIDA,)
Statutory Defendant.)

FIRST PARTIAL
CONSENT DECREE

WHEREAS, Plaintiff, the United States of America, by the authority of the Attorney General of the United States and through its undersigned counsel, acting at the request and on behalf of the Administrator of the United States Environmental Protection Agency ("EPA"), has filed a complaint in this action seeking injunctive relief pursuant to Section 504 of the Clean Water Act (the "Clean Water Act"), 33 U.S.C. § 1364, alleging that defendants, Metropolitan Dade County and the Miami-Dade Water and Sewer Authority Department (hereinafter collectively referred to as the "Defendants"), are presenting an imminent and substantial endangerment to the health or welfare of persons by i) the continued use of the 72-inch force main that conveys untreated wastewater from the City of Miami under Biscayne Bay to

the Central District Wastewater Treatment Plant ("Central Plant"), and ii) the unpermitted discharge of untreated wastewater from the Defendants' wastewater treatment and collection system; and

WHEREAS, Defendant Metropolitan Dade County,

...1st Partial CD...

WHEREAS, the First Partial Consent Decree entered by this Court on January 13, 1994, resolves the First Claim for Relief by the United States in the complaint concerning the alleged threat presented by the continued use of the 72-inch force main that conveys untreated wastewater from the City of Miami under Biscayne Bay to the Central Plant; and

WHEREAS, the Court of Dismissal of the Complaint

...2nd Partial CD...

Sanitary Sewer Capacity Certification: Past, Present & Future

The Federal Consent Decree: *Are We Alone?*

The screenshot shows a Windows Internet Explorer browser window displaying the EPA website. The address bar shows the URL <http://cfpub.epa.gov/enforcement/cases/index.cfm>. The page title is "Search Results | US Environmental Protection Agency - Windows Internet Explorer provided by Miami-Dade County". The EPA logo and navigation menu are visible at the top. The main content area shows search results for "Sanitary Sewer Capacity Certification".

Search Results

Currently available civil cases are listed below. Each case has a brief description and a link to the case.

You will need Adobe Reader to view some of the files on this page. See EPA's Page 1

Definitions:
Air: CAA | Water: CWA, MPRSA, OPA, SDWA | Waste & Chemical: CERCLA, EPCRA, FIFRA

Cases and Settlements by: SEARCH RESULTS

Search all case descriptions:

Respondent	Date	Case	HQ
Boston Water and Sewer Commission Settlement			
City of Chattanooga, Tennessee Clean Water Act Settlement			
City of Memphis, Tennessee Sanitary Sewer Overflow Settlement			
City of South Bend, Indiana Settlement			
Metropolitan Water Reclamation District of Greater Chicago Settlement			
St. Louis Clean Water Act Settlement	08/04/2011	CWA	HQ

Search Results Table:

Citation	Rank(R)	Database	Mode
60 FR 21217-01	R 2 OF 20	FR	Page
1995 WL 248279 (F.R.)			
(a as: 60 FR 21217)			

NOTICES

DEPARTMENT OF JUSTICE

Notice of Lodging of Consent Decree Pursuant to the Clean Water Act

Monday, May 1, 1995

*21217 In accordance with Departmental policy, 28 CFR 50.7, notice is hereby given that a proposed partial consent decree in United States v. Metropolitan Dade County, et al., Case No. Civ-93-1109-Moreno, was lodged on April 19, 1995, with the United States District Court for the Southern District of Florida. The consent decree settles all claims for injunctive relief and civil penalties brought against Metropolitan Dade County and the Miami-Dade Water and Sewer Authority Department under Sections 301, 309 (b) and (d), and 402 of the Clean Water Act, 33 U.S.C. 1311, 1319 (b) and (d), and 1342, and sets forth remedial measures, supplemental environmental projects, and a civil penalty. The Department of Justice will receive, for a period of thirty (30) days from the date of this publication, comments relating to the proposed consent decree. Comments should be addressed to the Assistant Attorney General for the Environment and Natural Resources, Department of Justice, Room 5638

Sanitary Sewer Capacity Certification: Past, Present & Future

The Federal Consent Decree: *Are We Alone?*



Enforcement Home

U.S. ENVIRONMENTAL PROTECTION AGENCY

Civil Enforcement Cases and Settlements

Contact Us Search: All EPA Compliance and Enforcement

You are here: [EPA Home](#) » [Enforcement](#) » [Civil Cases and Settlements](#) » City of Memphis, Tennessee Sanitary Sewer Overflow Settlement

City of Memphis, Tennessee Sanitary Sewer Overflow Settlement

(Washington, DC - April 16, 2012) The U.S. Environmental Protection Agency, the U.S. Department of Justice, the Tennessee Department of Environment and Conservation and the Office of the Tennessee Attorney General announced a comprehensive Clean Water Act (CWA) settlement with the City of Memphis, Tenn. Memphis has agreed to make improvements to its sewer systems to eliminate unauthorized overflows of untreated raw sewage. Memphis estimates such work will cost approximately \$250 million.

On this page:

- [Overview of Municipality](#)
- [Violations](#)
- [Injunctive Relief](#)
- [Sewer Assessment and Rehabilitation Program](#)
- [Pollutant Reductions](#)
- [Health and Environmental Effects](#)
- [Supplemental Environmental Projects](#)
- [Civil Penalty](#)
- [State Partners](#)
- [Comment Period](#)
- [Contact](#)

Overview of Municipality

The City of Memphis, Tennessee (Memphis) owns and operates the collection and transmission system, as well as two wastewater treatment plants (WWTP), of the separate sanitary sewer system. The two wastewater treatment plants are the M.C. Stiles WWTP and the T.E. Maxson WWTP. Memphis' two WWTPs have a designed treatment capacity of 225 million gallons per day and processes on average, 143 million gallons per day. Memphis' sewage collection and transmission system includes approximately 2,350 miles of gravity lines, 50 miles of pressurized force mains, 85,000 manholes and 95 pump stations.

City of Memphis, Tennessee Sanitary Sewer Overflow Settlement Resources

- [Press Release \(04/16/12\)](#)
- [Consent Decree \(PDF\)](#) 313pp, 17MB, [About PDF](#)

"EPA is working with communities across country to address sewage overflows that impact the health of residents and impair local water quality. This collaborative agreement with the city of Memphis will reduce untreated raw sewage overflows, protecting area waterways now and into the future." - Cynthia Giles, Assistant Administrator of EPA's Office of Enforcement and Compliance and Assurance.

Sanitary Sewer Capacity Certification: Past, Present & Future

The Federal Consent Decree: *Are We Alone?*



Enforcement Home

U.S. ENVIRONMENTAL PROTECTION AGENCY

Civil Enforcement Cases and Settlements



[Contact Us](#) Search: All EPA Compliance and Enforcement

You are here: [EPA Home](#) » [Enforcement](#) » [Civil Cases and Settlements](#) » Hampton Roads Sanitation Clean Water Act Settlement in the Chesapeake Bay Area

Hampton Roads Sanitation Clean Water Act Settlement in the Chesapeake Bay Area

(WASHINGTON, DC - Sept. 29, 2009) Hampton Roads Sanitation District (HRSD), based in Virginia Beach, Va., has agreed to pay a \$900,000 civil penalty and to take corrective actions to reduce alleged sanitary sewer overflows from its collection system and nine sewage treatment plants that have polluted the Chesapeake Bay and its tributaries, the Justice Department, U.S. Environmental Protection Agency (EPA), and the Commonwealth of Virginia announced today.

Under a settlement filed today in federal court in Norfolk, Va., HRSD is required to collect data, conduct computer modeling, and, working with the municipalities that it serves, develop a regional plan to ensure that the HRSD sewer system has adequate capacity to handle flows from severe storms and to prevent overflows of sewage. Subsequently, HRSD must implement the regional plan. Since HRSD has not identified the projects pending completion of the plan, the cost of that effort is currently unknown although it is expected to cost millions of dollars.

The settlement also requires HRSD to make major upgrades and improvements to the sewer system infrastructure over the next eight years. These upgrades are estimated to cost at least \$140 million. The settlement requires that HRSD evaluate, replace, rehabilitate, or upgrade pipes, pump stations and other infrastructure where inspections and screenings show a material risk of failure; HRSD also must submit and implement a plan to effectively manage, operate and maintain the sanitary sewer system to help prevent future sanitary sewer overflows.

"Today's settlement represents EPA's continuing commitment to protect and restore the health of the Chesapeake Bay," said Cynthia Giles, Assistant Administrator of EPA's Office of Compliance and Assurance. "EPA's compliance and enforcement strategy targets sewage treatment plants, concentrated animal feeding operations, storm water runoff and other sources that may contribute significant pollution to the bay."

- [Press Release](#) (09/29/09)
- [Consent Decree \(PDF\)](#) (99 pp, 295K, [About PDF](#))
- [Consent Decree \(PDF\)](#) (33 pp, 295K, [About PDF](#))

[...Consent Decree...](#)

Sanitary Sewer Capacity Certification: Past, Present & Future

The Federal Consent Decree: *Where's Capacity Certification?*

Requirements of Paragraph 14.

16. C. Adequate Transmission and Treatment Capacity

i) As of the Date of Lodging of this Partial Consent Decree, Defendants shall authorize only those sewer service connections as provided for in this Paragraph, and only under the conditions set forth in Appendix B. This Paragraph shall apply both to Defendants' collection system and to the collection systems of entities and municipalities serviced on a "bulk" basis by Defendants.

ii) Adequate treatment capacity shall be demonstrated by Defendants' certification that the wastewater treatment plant that will receive flow from newly authorized sewer service connection(s) will not be in "non-compliance" as defined in 40 C.F.R. Part 123.45, Appendix A, at the time the wastewater treatment plant receives the flow from the newly authorized sewer service connection.

iii) Adequate transmission capacity shall be demonstrated by Defendants' certification that each pump station

27

immediately upstream from the pump station receiving flow from the newly authorized sewer service connection, and all pump stations through which flow from the newly authorized sewer service connection passes to the wastewater treatment plant receiving such flow, exhibits a nominal average pump operating time of less than or equal to ten (10) hours per day. Nominal average pump operating time shall be defined as the daily average total pump operating hours for the previous twelve (12) months divided by one less than the total number of pumps installed in that station. Certification of adequate transmission capacity for each newly authorized sewer service connection shall require the consideration of all existing flow and loadings, including anticipated wastewater flow, resulting from all previously authorized sewer service connection(s). Defendants shall

What happens when NAPOT > 10 hrs?

Can't Certify Capacity!

Most commonly referred to as Moratorium

...1st Partial CD...

Sanitary Sewer Capacity Certification: Past, Present & Future

The Federal Consent Decree: *Where's Capacity Certification?*

Requirements of Paragraph 14.

16. C. Adequate Transmission and Treatment Capacity

i) As of the Date of Lodging of this Partial Consent Decree, Defendants shall authorize only those sewer service connections as provided for in this Paragraph, and only under the conditions set forth in Appendix B. This Paragraph shall apply both to Defendants' collection system and to the collection systems of entities and municipalities serviced on a "bulk" basis by Defendants.

ii) Adequate treatment capacity shall be demonstrated by Defendants' certification that the wastewater treatment plant that will receive flow from newly authorized sewer service connection(s) will not be in "non-compliance" as defined in 40 C.F.R. Part 123.45, Appendix A, at the time the wastewater treatment plant receives the flow from the newly authorized sewer service connection.

iii) Adequate transmission capacity shall be demonstrated by Defendants' certification that each pump station

27

immediately upstream from the pump station receiving flow from the newly authorized sewer service connection, and all pump stations through which flow from the newly authorized sewer service connection passes to the wastewater treatment plant receiving such flow, exhibits a nominal average pump operating time of less than or equal to ten (10) hours per day. Nominal average pump operating time shall be defined as the daily average total pump operating hours for the previous twelve (12) months divided by one less than the total number of pumps installed in that station. Certification of adequate transmission capacity for each newly authorized sewer service connection shall require the consideration of all existing flow and loadings, including anticipated wastewater flow, resulting from all previously authorized sewer service connection(s). Defendants shall

T N A P O
10

Adequate Transmission Capacity Is Defined By A Napot \leq 10 Hrs!

Past

Sanitary Sewer Capacity Certification: Past, Present & Future

Sanitary Sewer Capacity Certification: *Where does it begin & where is the NAPOT?*

Utilities Submit ET Readings



RER Database Updated Monthly



NAPOT

Monthly Reports: EPA, Utilities and Cities

A	B	C	D	E
1	UTILITY NAME	ADDRESS	MORATORIUM	MORATORIUM DATE
2	30	0001	390 NW NORTH RIVER DR	OK
3	30	0002	928 BISCAYNE BLVD	OK
4	30	0004	65 SE 25 RD	OK
5	30	0005	740 NE 55 TER	OK
6	30	0006	540 NW 77 ST	OK
7	30	0007	621 NW 14 ST	OK
8	30	0008	1109 BRICKELL AVE	OK
9	30	0009	2202 SW 26 LN	TM
10	30	0010	1003 NW 28 AVE	OK
11	30	0011	8698 SW 28 ST	CM
12	30	0016	2190 SW 19 ST	OK
13	30	0020		
14	30	0021		
15	30	0023		
16	30	0029		
17	30	0032		
18	30	0033		
19	30	0034		
20	30	0035		
21	30	0037		
22	30	0038		
23	30	0041		
24	30	0042		
25	30	0044		
26	30	0045		
27	30	0049		
28	30	0050		

ET Data QC & PS Status Updated Monthly

REPORTS

Sanitary Sewer Capacity Certification: Past, Present & Future

Sanitary Sewer Capacity Certification: *Why 10 hrs?*

Pump Station Information - Windows Internet Explorer provided by Miami-Dade County

Pump Station Monthly Information

Pump Station Information:
* Please remember that this search may take some time.

Moratorium Code: OK
 OK

Address:
 8340 NW 54 ST

Moratorium in effect since: 1/27/2007

Section - Township - Range: 22-53-40

Generator:	ET clock:	Telemetry:
Y	Y	Y
Type:	Class:	Speed:
A	L	L
Number of Pumps:		H.P.:
2		+

Station Category: ET

Yearly NAPOT (hrs):	8.23
Reserve Flow(gpd):	50,160
Projected Napot:	8.99
Peak Factor:	2.40
Used Capacity (%):	89.90

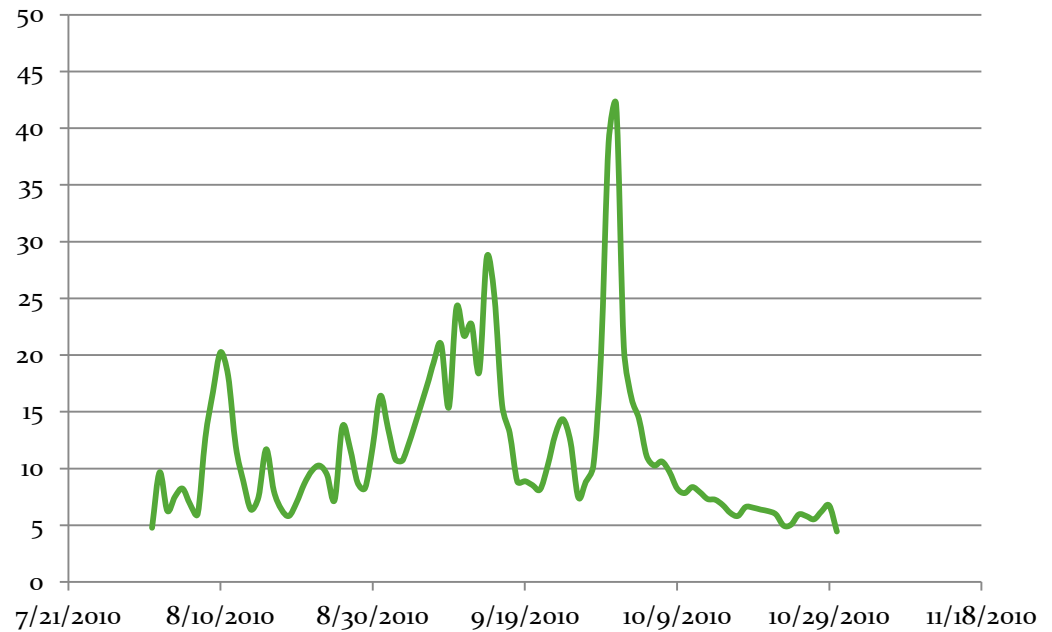
Station Information:

Gross Capacity:	1,584,000
Reduction(Factor):	1.00
Net Capacity:	0
Net Cap Certif.:	1,584,000
Indicated Flows:	543,180

Station Monthly Readings:

Reading Date:	NAPOT:	Reading Flag:	Pump #:	Comments:
5/2/2011	1.77	Y	2	
4/1/2011	7.02	Y	2	
3/1/2011	9.73	Y	2	
2/1/2011	3.33	Y	2	
1/3/2011	3.66	Y	2	
12/1/2010	4.89	Y	2	

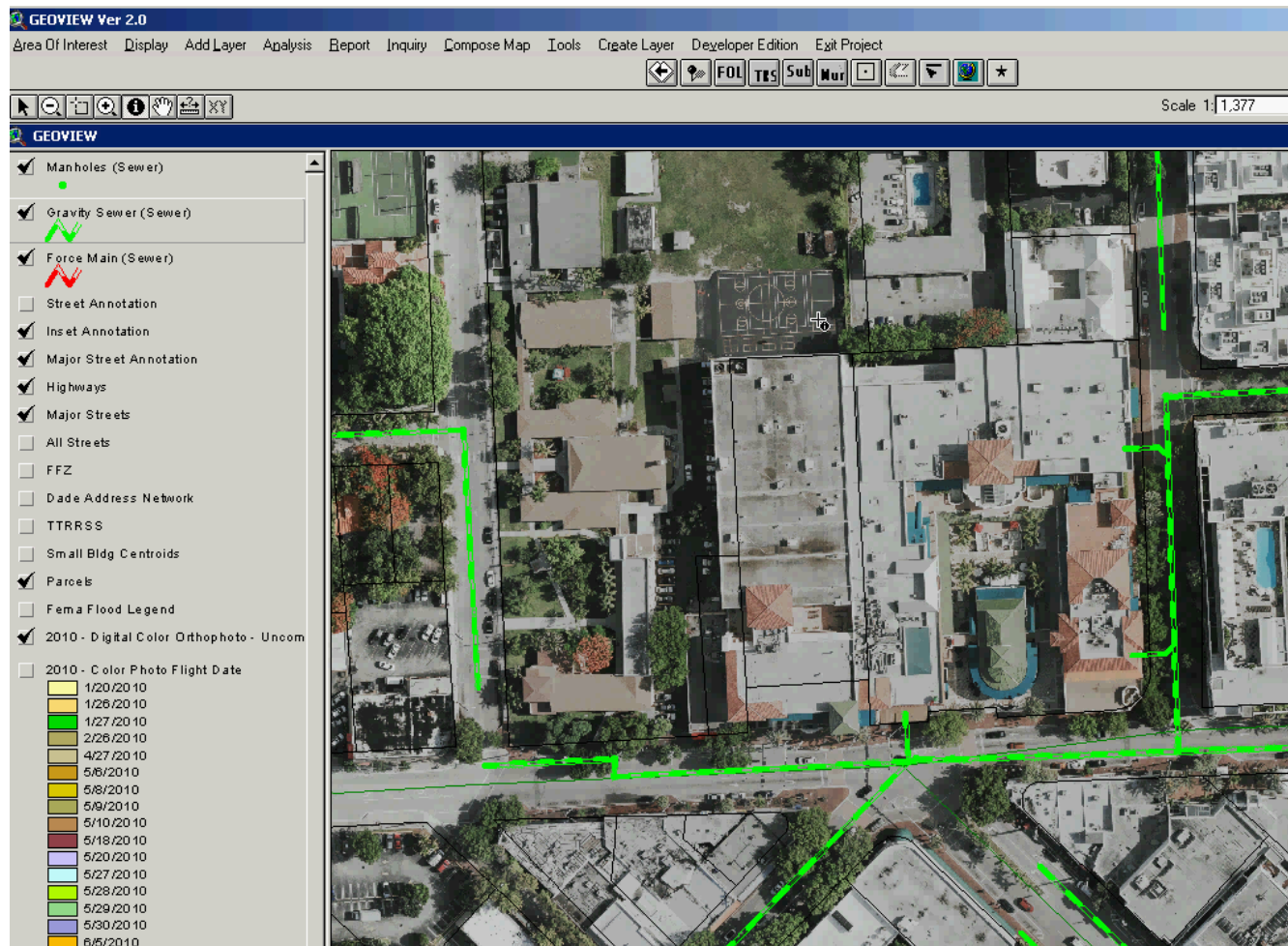
Dail Run Times for Single Pump Station: 30-0014



— Daily Run Times for Single Pump Station: 30-0014

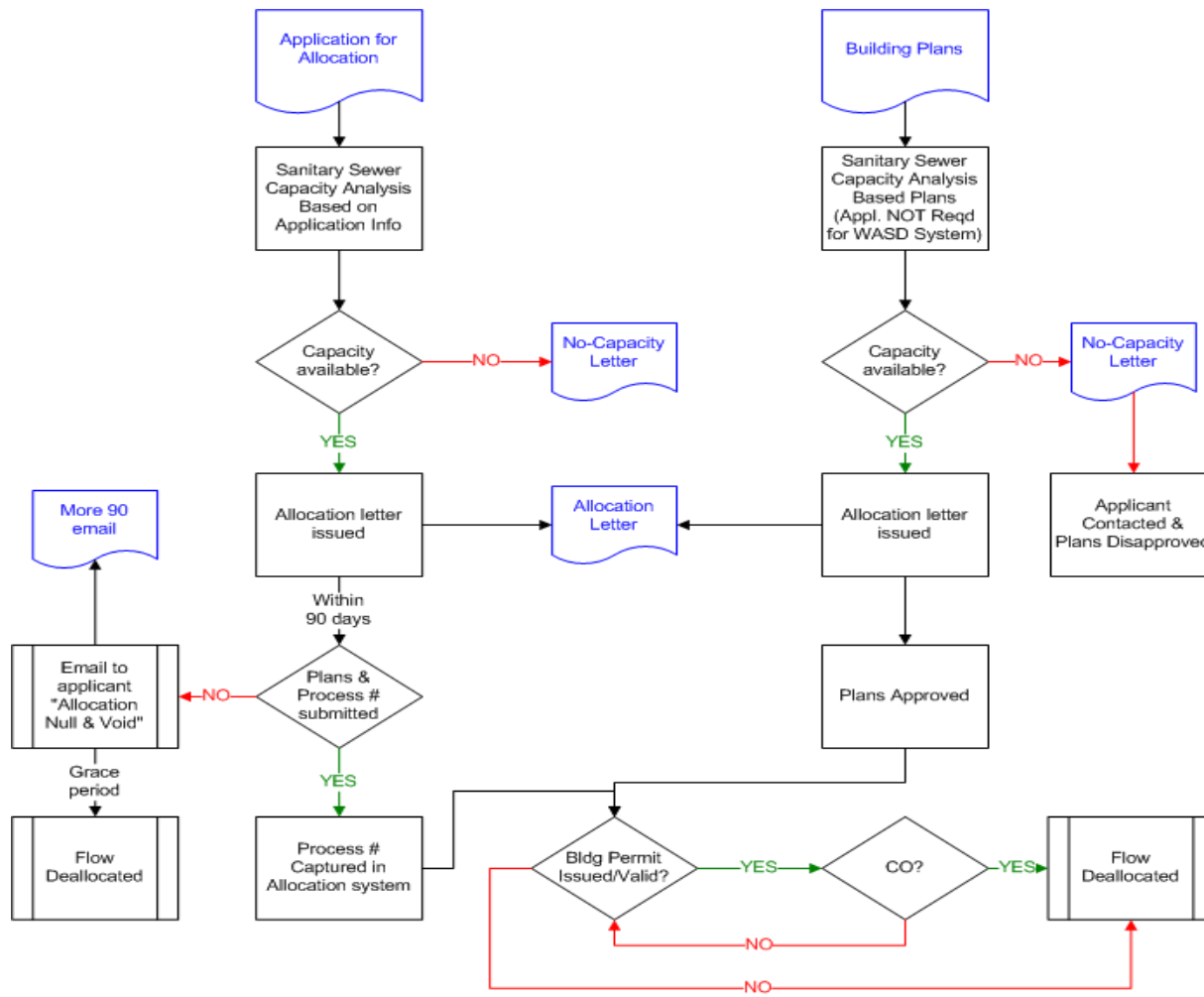
Sanitary Sewer Capacity Certification: Past, Present & Future

Sanitary Sewer Capacity Certification: *How is Capacity Checked for a project?*



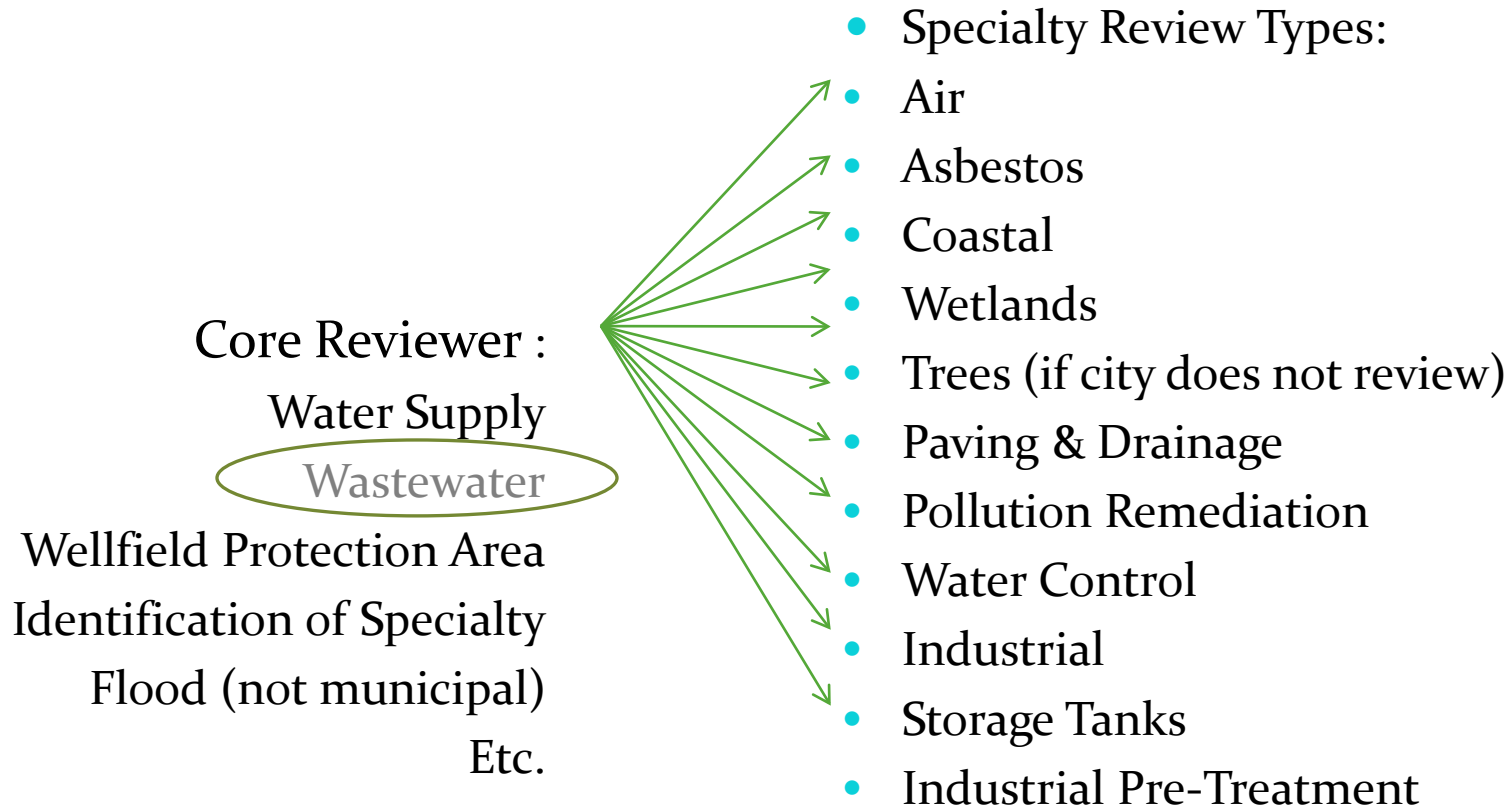
Sanitary Sewer Capacity Certification: Past, Present & Future

Sanitary Sewer Capacity Certification: *When is capacity Checked ?*



Sanitary Sewer Capacity Certification: Past, Present & Future

Sanitary Sewer Capacity Certification: *When is capacity Checked ?*



Sanitary Sewer Capacity Certification: Past, Present & Future

Sanitary Sewer Capacity Certification: *What are IN, TM, IM..?*

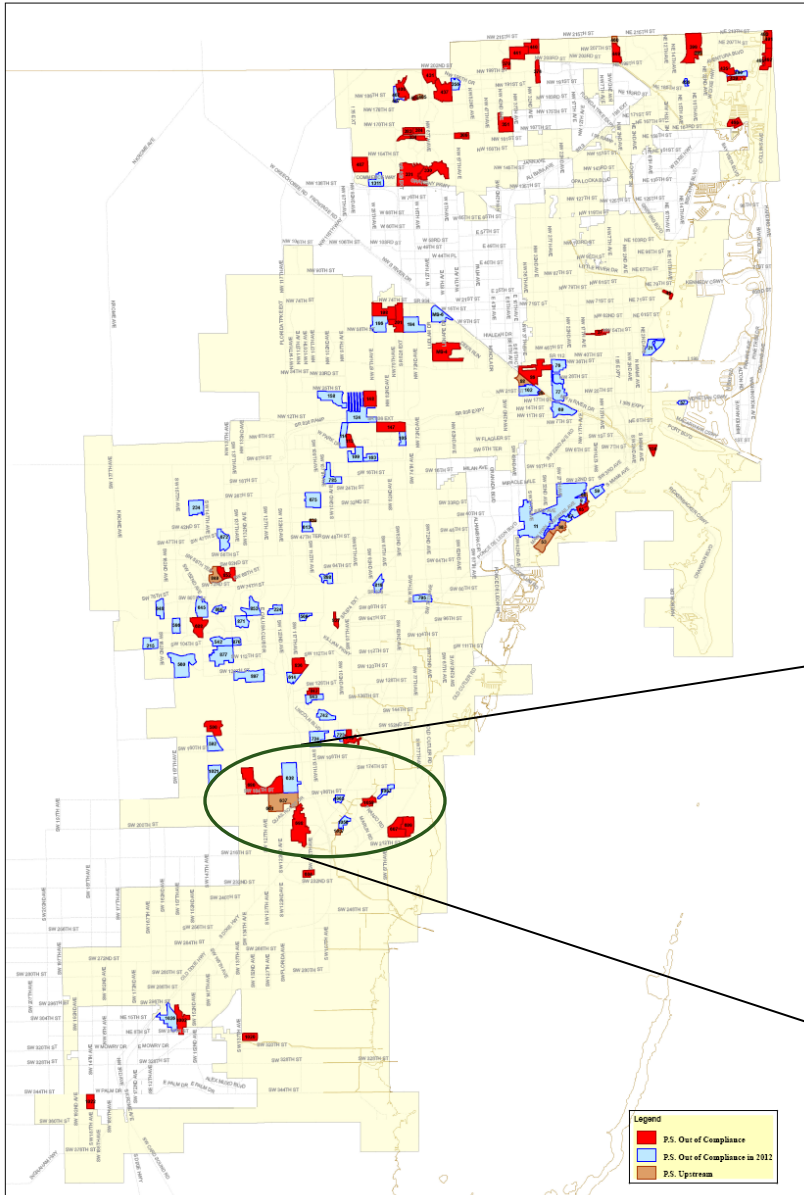
Status	Title	Description
OK	----	All is good.
IN	Insufficient Data	ET data has not been submitted.
TM	Temporary Moratorium	Database has identified NAPOT > 10 hrs
IM	Initial Moratorium	Staff has verified data and changed from TM to IM
CM	Condition Moratorium	Plan of Corrective Action submitted by Utility
CH	Condition & Hold	Station monitored for 12 months after repair/certification. If the station hours exceed 10 hrs, the station is put in CH status
AC	Approved & Corrected	Pump station hours are below 10 hrs
AM	Absolute Moratorium	After 12 months of monitoring, the PS remains above 10 hrs

Sanitary Sewer Capacity Certification: Past, Present & Future Utility Stations

Sanitary Sewer Capacity Certification: *What are IN, TM, IM..?*

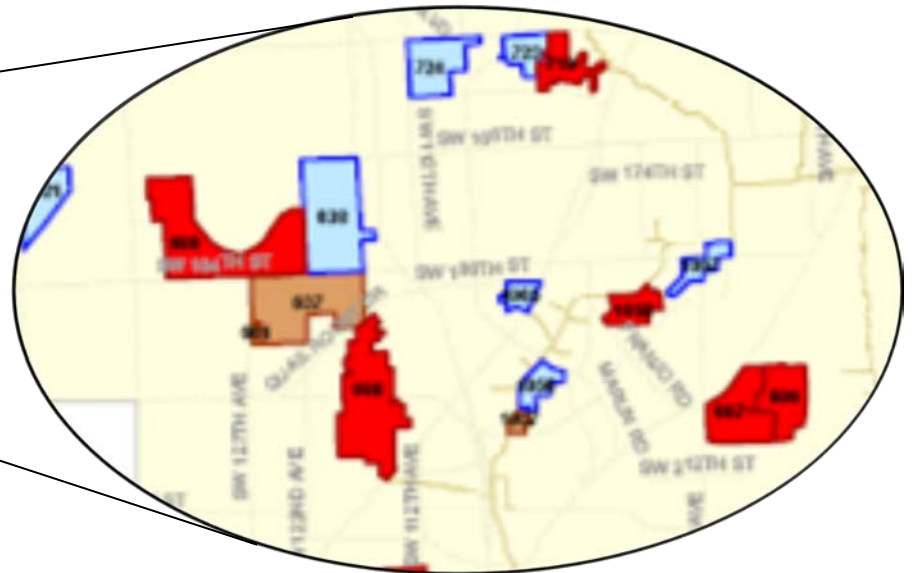
Status	Title	Can Allocation Be Issued?
OK	----	Yes, if projected flows for all downstream PS is \leq 10 hrs
IN	Insufficient Data	NO
TM	Temporary Moratorium	NO
IM	Initial Moratorium	NO
CM	Condition Moratorium	YES – but no CO/CU until repairs certified by Utility
CH	Condition & Hold	NO
AC	Approved & Corrected	Yes
AM	Absolute Moratorium	NO

MD-WASD
Pump Stations Out of Compliance



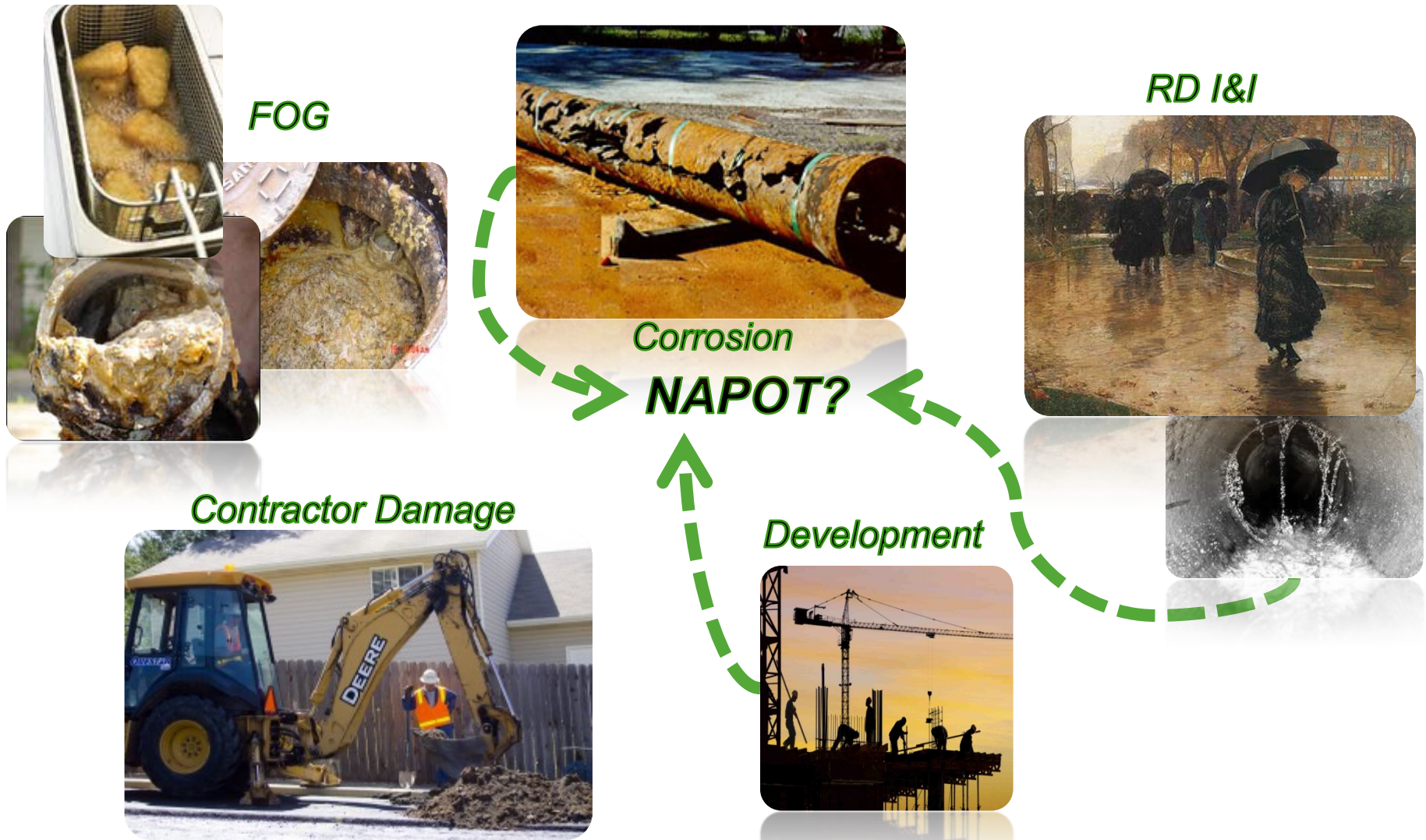
Sanitary Sewer Capacity Certification: Past, Present & Future

Sanitary Sewer Capacity Certification: *WASD Pump Station Basins*



Sanitary Sewer Capacity Certification: Past, Present & Future

Quick Quiz: Which one of these affects the NAPOT?



Sanitary Sewer Capacity Certification: Past, Present & Future

Planning Tools: *The Earlier the Better!*

- **Pump Station Status Request Form** – Complete and submit (via email) a Pump Station Status Request Form and we will check status**.
 - *To be upgraded to a Web-Based application.*
- **Letter of Interpretation** – determine if use can be approved *before* investing, purchasing, renting, leasing, etc.
- **Reserve Flow** – good for 90 days – can be recertified.
- **Development Pre-submittal meeting** – get the facts before committing.
- **Rework meeting** – helps design professional understand the pending disapproval comments before resubmitting plans.

Sanitary Sewer Capacity Certification: Past, Present & Future

Project in Basin under Moratorium: *What are the options?*

Coconut Grove What's this?

NEWS FROM: Coconut Grove, Silver Bluff, West Grove VIEW OF

Select your community or Select from a map

Posted on Monday, 10.08.12 A A  2 email print comment reprints

COCONUT GROVE

Miami-Dade County: No new toilets, sinks allowed for businesses in Coconut Grove

Already-struggling business owners in Coconut Grove recently received more bad news: The county has imposed a moratorium on sewer hookups, meaning no new toilets, sinks or showers for now.



This rundown apartment building, with a for sale sign on it at 3355 Grand Ave., sits on land that is part of a planned redevelopment of the West Grove. This project and others in Coconut Grove face a sewage hookup moratorium. EMILY MICHOT / MIAMI HERALD STAFF

BY KATHLEEN MCGRORY AND CHARLES RABIN
KMCGRORY@MIAMIHERALD.COM

Business has been slow at the Blonde Tulip, a quaint flower shop in the Mayfair in Coconut Grove, so Pearl Meyer figured she could boost earnings by adding a coffee bar. She was stunned when Miami-Dade County denied her a permit for a new sink.

"It's frustrating," said Meyer. "We've been dealing with the permit process for six months, and this was just the latest hang up."

Meyer is not alone. The Blonde Tulip's was one of 12 permit applications to add a sink, toilet or shower in Coconut Grove that have been denied since August, when the county put a moratorium on any new sewage outflow to the main pump station that serves the neighborhood. With higher-than-

Sanitary Sewer Capacity Certification: Past, Present & Future

Project in Basin under Moratorium: *Options?*

- To be approved, the project must result in a No-Net-Increase (NNI).
- Which project are NNIs?
 - Use Temporary Septic Tank System (use must be compatible).
 - Use does not change or use changes to equal or lower flow use:
 - Shoe Store to Dress Shop – Retail to Retail
 - Full Service Restaurant to Take Out or Fast Food.
 - Take Out to Full Service
 - Use changes to higher flow, but Flow Study shows no increase.
 - Actual Flow data from similar uses (e.g., Full Service Restaurant Chain shows that their restaurants uses 50 gpd/100 sqft instead of 100 gpd/100 sqft.)
 - Design incorporates higher efficiency fixtures or other design elements to reduce water consumption.



Sanitary Sewer Capacity Certification: Past, Present & Future

Project in Basin under Moratorium: *Flow Study!*

	A	B	C	D	E	F	G
4	Process Number:						
5	Existing Use:		Office	Gym	Proposed Use:		Office Gym
6	Existing Sqft:		3572	600	Proposed Sqft:		0 4172
7	Existing q (gpd/sqft):				Existing q (gpd/sqft):		
8	Existing Q (gpd):		0	0	Existing Q (gpd):		0 0
9	Totakl Q (gpd):		0		Totakl Q (gpd):		0
10	Net Q (gpd):		0.0				
11							
12	RESIDENTIAL BASE CASE						
13			Used? Yes = 1 No = 0			Employees & Visitors	100
14				Unit Flow Rates		Flow Rate GPD	Uses/Day
15	Water Closet	Conventional	1		GPF	0.00	1
16	Urinal_Male	Conventional	1		GPF	0.00	0.5
17	Lavatory Faucet (15 sec)	Conventional	1		GPM	0.00	1
18	Shower (20 min)	Conventional	1		GPM	0.00	1
19							
20							
21							
22					Domestic Volume =	-	GPD
23					Other flows =	-	GPD
24					Total =	-	GPD
25	RESIDENTIAL DESIGN CASE						
26			Used? Yes = 1 No = 0			Family Size:	100
27				Unit Flow Rates		Flow Rate GPD	Uses/Day
28	Water Closet	Conventional	1		GPF	0.00	1
29	Urinal_Male	Conventional	1		GPF	0.00	0.5
30	Lavatory Faucet (15 sec)	Conventional	1		GPM	0.00	1
31	Shower (20 min)	Conventional	1		GPM	0.00	1
32							
33							
34							
35					Domestic Volume =	-	GPD
36					Other flows =	-	GPD
37					Total =	-	GPD
38							
39					Daily Volume Saved by Retrofit =	-	gal
40							
41							
42					Percent Reduction =	#DIV/0!	gpd



Sanitary Sewer Capacity Certification: Past, Present & Future

Sanitary Sewer Capacity Certification: *What's Next?*

*While the definition for Adequate Transmission Capacity remains the same – **NAPOT ≤ 10 hrs** - there is a significant change proposed to how Additional Flows can be authorized.*

Currently:

Additional flows can be authorized if:

Projected NAPOT ≤ 10 Hrs

Sanitary Sewer Capacity Certification: Past, Present & Future

Authorizing Additional Flows: *Infill Projects!*

Proposed**:

***Projects with existing connection to sewers or
connecting to an existing sewer:***

Additional flows can be authorized if :

- (a) Projected NAPOT \leq 10 hrs, or
- (b) Projected NAPOT \leq 12 hrs and,
 - (i) Projected NAPOT increase $<$ 0.5 hrs and,
 - (ii) Additional Flow $<$ 10,000 GPD

Sanitary Sewer Capacity Certification: Past, Present & Future

Authorizing Additional Flows: *Projects In Existing PS Basin+SE!*

Proposed**:

Projects within an Existing PS Basin but requiring a

Sewer Extension:

Additional flows can be authorized if :

- (a) Projected NAPOT \leq 10 hrs, and
 - (i) Projected AADF \leq 1,000 GPD or,
 - (ii) HAMA \leq 15 hrs, or
 - (iii) HAMA $>$ 15 but peak capacity study shows no upgrades required + no SSOs w/in prior 12 months.

Sanitary Sewer Capacity Certification: Past, Present & Future

Authorizing Additional Flows: *Projects w/NEW Basin!*

Proposed**:

***Projects requiring new collection system, Pump Station
and Force Main:***

- (a) Peak capacity study will determine under what conditions the new system is allowed to connect to transmission system.